

MULTISPLIT

Outdoor unit

MUEX-H11 series up to 5x1

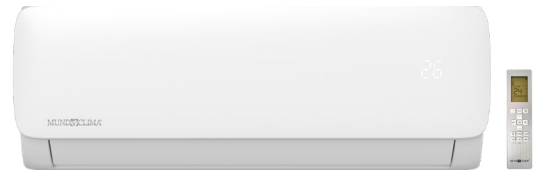
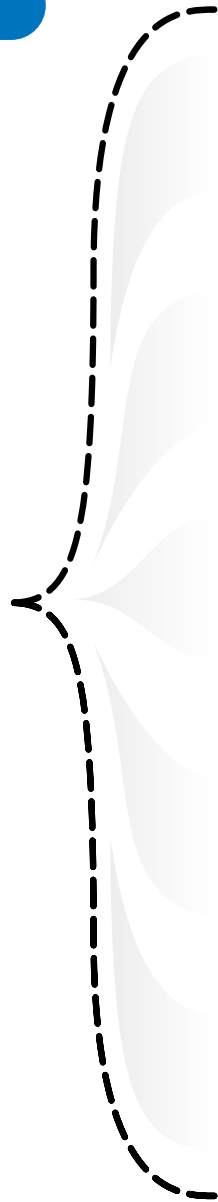


New 5.2 kW 3x1 model

R32
Ecological gas

SEER
A++

SCOP⁽¹⁾
A+++



Accessories



JC-02
(CL94724)



M-CHECK
(CL09410)

"Golden fin" treatment



It protects heat exchangers against atmospheric phenomena and effects of aggressive environments.

It prevents the proliferation of bacteria and mold.

"Core Genius" technology

It allows a continuous operation at an ultra-low compressor speed of only 12 Hz, decreasing compressor vibration by up to 16 times compared to conventional equipment.



ENGINEERING MODE

Download the engineering mode manual from this QR code and... discover all the possibilities!



(1) SCOP warm climate zone, see specification table for more information.

MULTISPLIT EXTERNAL UNIT H11



SPECIFICATIONS

Model			MUEX-14-H11.2	MUEX-18-H11.2	MUEX-18-H11.3	MUEX-21-H11.3		
Code			CL21400	CL21401	CL21402	CL21403		
EAN Code			8432953051990	8432953052003	8432953060411	8432953052010		
Cooling (*)	Nominal capacity (min. - max.)		kW	4.10 (1.47 - 4.98)	5.28 (2.23 - 5.57)	5.28 (2.05 ~ 6.01)	6.15 (1.99 - 6.59)	
	Nominal consumption (min. - max.)		kW	1.27 (0.10 - 1.65)	1.63 (0.69 - 2.00)	1.45 (0.67 - 1.90)	1.90 (0.18 - 2.20)	
	Pdesignc (design load)		kW	4.1	5.3	5.3	6.1	
	SEER		W/W	6.8	6.1	6.8	6.5	
	Energy Efficiency Class			A++	A++	A++	A++	
	Seasonal energy efficiency for space cooling		ηs,c (%)	--	--	--	--	
	Annual electricity consumption		kWh/year	215	310	273	328	
Heating (*)	Nominal capacity (min. - max.)		kW	4.40 (1.61 - 4.84)	5.57 (2.34 - 5.63)	5.28 (2.05 ~ 5.71)	6.45 (1.99 - 6.68)	
	Nominal consumption (min. - max.)		kW	1.18 (0.22 - 1.63)	1.50 (0.60 - 1.78)	1.38 (0.65 - 1.65)	1.73 (0.35 - 1.80)	
	Intermediate climate zone	Pdesignh (design load)		kW	3.8	4.5	4.7	5.4
		SCOP		W/W	4.0	4.0	4.1	4.0
		Energy labeling			A+	A+	A+	A+
		Seasonal energy efficiency for space heating		ηs,h (%)	--	--	--	--
		Annual electricity consumption		kWh/year	1340	1580	1634	1890
		Tbiv (bivalent temperature)		°C	-7	-7	-7	-7
	Warm climate zone	Pdesignh (design load)		kW	4.1	5.0	4.2	5.5
		SCOP		W/W	5.1	5.1	5.1	5.1
		Energy labeling			A+++	A+++	A+++	A+++
		Annual electricity consumption		kWh/year	1125	1377	1168	1510
		Tbiv (bivalent temperature)		°C	2	2	2	2
	Tol (temperature operating limit)		°C	-15	-15	-15	-15	
	Outdoor unit	Air flow rate (max.)		m³/h	2,100	2,100	2,100	3,000
Sound pressure (High)		dB (A)	55	54	57	55		
Sound power (High)		dB (A)	65	65	64	66		
Dimensions (W x H x D) (*)		mm	805 x 554 x 330	805 x 554 x 330	805 x 554 x 330	890 x 673 x 342		
Weight		kg	31.6	35.0	36.2	43.3		
Refrigerant	Type / GWP			R32 / 675	R32 / 675	R32 / 675	R32 / 675	
	Load		kg	1.1	1.3	1.5	1.5	
	CO ₂ equivalence		TCO ₂ eq	0.743	0.844	1.013	1.013	
	Preload until	Total 1/4" liquid pipes		m	15	15	15	22.5
		Total 3/8" liquid pipes		m	--	--	--	--
	Additional charge	1/4" liquid pipes		g/m	12	12	12	12
3/8" liquid pipes		g/m	--	--	--	--		
Refrigeration pipes	Liquid		mm (inch)	(1/4") x 2	(1/4") x 2	(1/4") x 3	(1/4") x 3	
	Gas		mm (inch)	(3/8") x 2	(3/8") x 2	(3/8") x 3	(3/8") x 3	
	Max. length		m	40	40	60	60	
	Length per Unit Indoor		m	25	25	30	30	
	Max. height difference	Between IDU's and the ODU		m	15	15	15	15
		Difference Among IDU's		m	10	10	10	10
Electrical data (*)	Power supply		V-Hz-Ph	230 / 50 / 1 Ph	230 / 50 / 1 Ph	230 / 50 / 1 Ph	230 / 50 / 1 Ph	
	Maximum consumption		kW	2.75	3.05	2.76	3.91	
	Max. current		A	12	13	12.0	17	
	Power cord (outdoor unit)		mm ²	2 x 2.5 + T	2 x 2.5 + T	2 x 2.5 + T	2 x 2.5 + T	
	Interconnection cable		mm ²	3 x 1 + T	3 x 1 + T	3 x 1 + T	3 x 1 + T	
Operation temperature	Indoor (Cooling / Heating)		°C	16 ~ 32 / 0 ~ 30	16 ~ 32 / 0 ~ 30	16 ~ 32 / 0 ~ 30	16 ~ 32 / 0 ~ 30	
	Outdoor (Cooling / Heating)		°C	-15 ~ 50 / -15 ~ 24	-15 ~ 50 / -15 ~ 24	-15 ~ 50 / -15 ~ 24	-15 ~ 50 / -15 ~ 24	

Notes:

(*) Data taken with MUPR-09-H11-I indoor units (as many as there are outlets in the outdoor unit).

(*) The dimensions are for the unit body, not including protruding elements (valve covers, grids, handles, etc.) for detailed dimensions.

(*) The electrical wiring sections indicated are recommended, but may be higher depending on each installation, these must be adapted to the electrical regulations in force.

* The design and specifications are subject to change without prior notice for product improvement.

** The sound level values correspond to values obtained in an anechoic chamber.

MULTISPLIT EXTERNAL UNIT H11



SPECIFICATIONS

Model			MUEX-27-H11.3	MUEX-28-H11.4	MUEX-36-H11.4	MUEX-42-H11.5		
Code			CL21404	CL21405	CL21406	CL21407		
EAN Code			8432953052027	8432953052034	8432953052041	8432953051822		
Cooling (*)	Nominal capacity (min. - max.)		kW	7.91 (3.03 - 8.50)	8.21 (2.49 - 10.26)	10.55 (2.74 - 11.29)	12.31 (2.64 - 12.31)	
	Nominal consumption (min. - max.)		kW	2.45 (0.23 - 3.25)	2.50 (0.15 - 3.43)	3.27 (0.21 - 4.12)	3.80 (0.18 - 4.60)	
	Pdesignc (design load)		kW	7.9	8.2	10.5	12.3	
	SEER		W/W	6.1	7.0	6.5	6.5	
	Energy Efficiency Class			A++	A++	A++	A++	
	Seasonal energy efficiency for space cooling		ηs,c (%)	--	--	--	257	
	Annual electricity consumption		kWh/year	453	404	565	662	
Heating (*)	Nominal capacity (min. - max.)		kW	8.21 (2.20 - 8.50)	8.79 (1.61 - 10.14)	10.55 (3.60 - 10.83)	12.31 (3.52 - 12.31)	
	Nominal consumption (min. - max.)		kW	2.21 (0.33 - 2.96)	2.40 (0.28 - 3.20)	2.84 (0.52 - 3.68)	3.30 (0.57 - 4.30)	
	Intermediate climate zone	Pdesignh (design load)		kW	5.7	6.8	9.2	9.5
		SCOP		W/W	4.0	4.0	4.0	3.8
		Energy labeling			A+	A+	A+	A
		Seasonal energy efficiency for space heating		ηs,h (%)	--	--	--	149
		Annual electricity consumption		kWh/year	1995	2394	3220	3500
	Warm climate zone	Tbiv (bivalent temperature)		°C	-7	-7	-7	-7
		Pdesignh (design load)		kW	6.3	6.8	10.0	9.8
		SCOP		W/W	5.1	5.1	5.1	5.1
		Energy labeling			A+++	A+++	A+++	A+++
		Annual electricity consumption		kWh/year	1729	1867	2745	2690
	Tbiv (bivalent temperature)		°C	2	2	2	2	
Tol (temperature operating limit)		°C	-15	-15	-15	-15		
Outdoor unit	Air flow rate (max.)		m³/h	3,000	3,800	4,000	3,850	
	Sound pressure (High)		dB (A)	55	63	62.5	61.5	
	Sound power (High)		dB (A)	68	70	70	70	
	Dimensions (W x H x D) (*)		mm	890 x 673 x 342	946 x 810 x 410	946 x 810 x 410	946 x 810 x 410	
	Weight		kg	48.0	62.1	68.8	74.1	
Refrigerant	Type / GWP			R32 / 675	R32 / 675	R32 / 675	R32 / 675	
	Load		kg	1.9	2.1	2.1	2.9	
	CO ₂ equivalence		TCO ₂ eq	1.249	1.418	1.418	1.958	
	Preload until	Total 1/4" liquid pipes		m	22.5	30	30	37.5
		Total 3/8" liquid pipes		m	--	7.5	7.5	7.5
	Additional charge	1/4" liquid pipes		g/m	12	12	12	12
3/8" liquid pipes		g/m	--	24	24	24		
Refrigeration pipes	Liquid		mm (inch)	(1/4") x 3	(1/4") x 3 + (1/4") x 1	(1/4") x 3 + (1/4") x 1	(1/4") x 4 + (1/4") x 1	
	Gas		mm (inch)	(3/8") x 3	(3/8") x 3 + (1/2") x 1	(3/8") x 3 + (1/2") x 1	(3/8") x 4 + (1/2") x 1	
	Max. length		m	60	80	80	80	
	Length per Unit Indoor		m	30	35	35	35	
	Max. height difference	Between IDU's and the ODU		m	15	15	15	15
		Difference Among IDU's		m	10	10	10	10
Electrical data (*)	Power supply		V-Hz-Ph	230 / 50 / 1 Ph	230 / 50 / 1 Ph	230 / 50 / 1 Ph	230 / 50 / 1 Ph	
	Maximum consumption		kW	4.1	4.15	4.95	4.7	
	Max. current		A	18	19	21.5	22	
	Power cord (outdoor unit)		mm ²	2 x 2.5 + T	2 x 4 + T	2 x 4 + T	2 x 4 + T	
	Interconnection cable		mm ²	3 x 1 + T	3 x 1 + T	3 x 1 + T	3 x 1 + T	
Operation temperature	Indoor (Cooling / Heating)		°C	16 ~ 32 / 0 ~ 30	16 ~ 32 / 0 ~ 30	16 ~ 32 / 0 ~ 30	16 ~ 32 / 0 ~ 30	
	Outdoor (Cooling / Heating)		°C	-15 ~ 50 / -15 ~ 24	-15 ~ 50 / -15 ~ 24	-15 ~ 50 / -15 ~ 24	-15 ~ 50 / -15 ~ 24	

Notes:

(*) Data taken with MUPR-09-H11-I indoor units (as many as there are outlets in the outdoor unit).

(*) The dimensions are for the unit body, not including protruding elements (valve covers, grids, handles, etc.) for detailed dimensions.

(*) The electrical wiring sections indicated are recommended, but may be higher depending on each installation, these must be adapted to the electrical regulations in force.

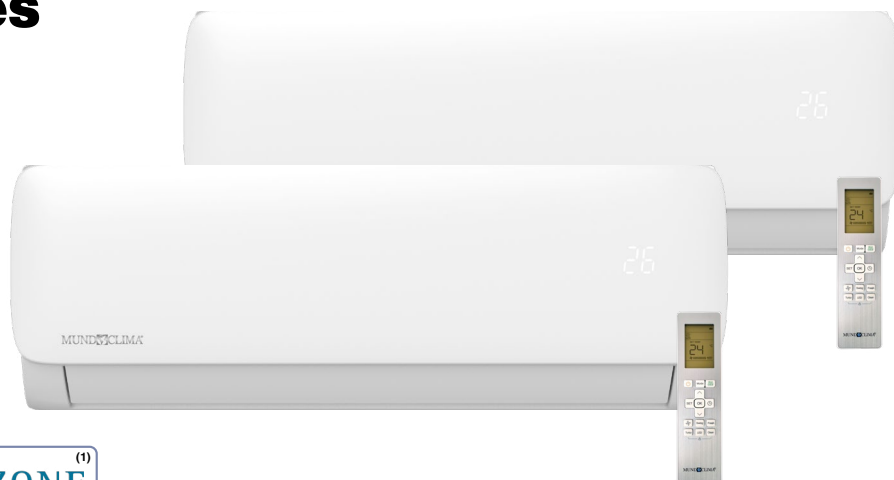
* The design and specifications are subject to change without prior notice for product improvement.

** The sound level values correspond to values obtained in an anechoic chamber.

MULTISPLIT Wall Type Indoor Unit MUPR-H11-I Series



RG10A1 (F2S)/BGEF
Included
(CL97807)



OPTIONALS

More information on the optionals in "MUNDOCLIMA CONTROL SYSTEMS"

Wired control⁽²⁾



KJR-29B1/BK-E⁽²⁾
(CL92869)



KJR-120N(X4W)/BGEF⁽¹⁾
(CL09211)



KJR-120P(X6W)/EF⁽¹⁾
(Black)
(CL09214)



KJR-120P(X6W)/EF⁽¹⁾
(White)
(CL09216)

Centralized control⁽¹⁾



CCM180A/WS⁽¹⁾
(CL09300)



CCM30/BKE⁽¹⁾
(CL92871)

Wired control with WI-FI⁽¹⁾



MD-AC-MBS⁽¹⁾
(CL99097 /
CL99114-116)



MD-AC-KNX⁽¹⁾
(CL94792 /
CL99094-095)



INBACMID⁽¹⁾
(CL99222/
CL99210)

BMS⁽¹⁾



EU-OSK-105
(CL09001)

WIFI

Accessories



H11 Multifunction Module
(CL09400)

⁽¹⁾ H11 multifunction module required.

⁽²⁾ Connection cable (CL98442) required, not recommended for use with the multifunction module.

SPECIFICATIONS

Model			MUPR-09-H11-I	MUPR-12-H11-I	MUPR-18-H11-I	MUPR-24-H11-I
Code			UI20055	UI20056	UI20057	UI20058
EAN Code			8432953048860	8432953048884	8432953048907	8432953048921
Cooling	Nominal capacity (min. ~ max.) ^(*1)	kW	2.64 (1.03 - 3.22)	3.52 (1.38 - 4.31)	5.28 (1.93 - 6.27)	7.03 (3.02 - 8.79)
	Nominal rating ^(*2)	W	0.021	0.023	0.036	0.068
Heating	Nominal capacity (min. ~ max.) ^(*1)	kW	2.93 (0.82 - 3.37)	3.81 (1.07 - 4.38)	5.57 (1.29 - 7.00)	7.33 (1.52 - 9.47)
	Nominal rating ^(*2)	W	0.021	0.023	0.036	0.068
Air flow rate (High / Medium / Low)		m ³ /h	520 / 460 / 330	530 / 400 / 350	800 / 600 / 500	1,090 / 770 / 610
Sound pressure (High / Medium / Low)		dB (A)	37 / 32 / 22	37 / 32 / 22	41 / 37 / 31	46 / 37 / 34
Sound power (High)		dB (A)	54	56	56	62
Refrigeration pipes	Liquid	mm (inch)	1/4"	1/4"	1/4"	3/8"
	Gas	mm (inch)	3/8"	3/8"	1/2"	5/8"
Dimensions (W x H x D)		mm	726 x 291 x 210	835 x 295 x 208	969 x 320 x 241	1083 x 336 x 244
Weight		kg	8	8.7	11.2	13.6

Notes:

^(*1) The nominal capacity may be different depending on the outdoor unit connected and the simultaneity, for more information please consult.

^(*2) The indicated consumption only refers to the indoor unit, this must be added to the consumption of the corresponding outdoor unit.

* The design and specifications are subject to change without prior notice for product improvement.

** The sound level values correspond to values obtained in an anechoic chamber.

MULTISPLIT Wall Type Indoor Unit MUPR-H14X Series

MUNDOCLIMA®
SUPER DC INVERTER

- Built-in presence sensor to save energy.
- Humidity control (between 35% and 85%).
- Multifunction module included (ON/OFF port and central control).
- Save even more installation and maintenance time!
- Disassemble the indoor unit in less than 1 minute. 1 screw only!



RG10L5(G2HS)/BGEF
Included
(CL09110)

DESIGNED BY AND
FOR THE INSTALLER
*You've never seen anything
like that*



OPTIONALS

More information on optionals in "CONTROL SYSTEMS"

Wired control with Wi-Fi

Centralized controller



KJR-120N(X4W)/BGEF
(CL09211)



KJR-120P(X6W)/EF
(Black)
(CL09214)



KJR-120P(X6W)/EF
(White)
(CL09216)



CCM180A/WS
(CL09300)



CCM30/BKE
(CL92871)



MD-AC-MBS
(CL99097 /
CL99114 - 116)



MD-AC-KNX
(CL94792 /
CL99094 - 095)



INBACMID
(CL99222 / CL99210)

SPECIFICATIONS

Model			MUPR-09-H14X-I	MUPR-12-H14X-I	MUPR-18-H14X-I	MUPR-24-H14X-I
Code			UI20060	UI20061	UI20062	UI20063
EAN Code			8432953058531	8432953058548	8432953058555	8432953058562
Cooling	Nominal capacity (min. ~ max.) ^(*)	kW	2.72 (1.32 ~ 3.81)	3.52 (1.32 ~ 3.96)	5.28 (1.99 ~ 6.13)	7.03 (2.11 ~ 8.21)
	Nominal rating ^(*)	W	0.021	0.025	0.036	0.060
Heating	Nominal capacity (min. ~ max.) ^(*)	kW	3.13 (0.88 ~ 4.4)	3.96 (0.88 ~ 4.54)	5.57 (1.35 ~ 6.77)	7.33 (1.55 ~ 8.21)
	Nominal rating ^(*)	W	0.021	0.025	0.036	0.060
Air flow rate (Turbo / High / Medium / Low)		m³/h	760 / 530 / 360 / 280	760 / 560 / 380 / 290	835 / 685 / 580 / 400	1540 / 1092 / 724 / 379
Sound pressure (High / Medium / Low)		dB (A)	40 / 32 / 21.5	41 / 36 / 22	41 / 35 / 23	44.5 / 40 / 33
Sound power (High)		dB (A)	55	55	59	64
Refrigeration pipes	Liquid	mm (inch)	1/4"	1/4"	1/4"	3/8"
	Gas	mm (inch)	3/8"	3/8"	1/2"	5/8"
Dimensions (W x H x D)		mm	795 x 295 x 225	795 x 295 x 225	965 x 319 x 239	1,140 x 370 x 275
Weight		kg	10.2	10.2	12.3	20

Notes:

(*)1 The nominal capacity may be different depending on the outdoor unit connected and the simultaneity, for more information please consult.

(*)2 The indicated consumption only refers to the indoor unit, this must be added to the consumption of the corresponding outdoor unit.

* The design and specifications are subject to change without prior notice for product improvement.

** The sound level values correspond to values obtained in an anechoic chamber.

MULTISPLIT Cassette Type Indoor Unit MUCSR-H14-I Series



360° Design
Thanks to the 360° panel design, the air is more evenly distributed.



Individual louver control
Possibility to adjust the angle of the 4 louvers independently.



Compact panel size (Except model 24)
The trim panel of the cassette type unit measures 600 × 600 mm.



Outdoor air inlet
Possibility of supplying outdoor air directly on the indoor unit.



Remote signals (CP)
The indoor unit has an ON/OFF input and an alarm and operation output.



Setpoint temperature range adjustment
The RG10 and KJR-120N controls allow limiting the setpoint temperature.



Rotation & Back up
This function allows redundant operation in installations with 2 units connected to the same KJR-120N wired control, in the event that one machine does not reach the setpoint temperature, the two machines will automatically start operating together at 24°C in the selected mode.
At the same time a rotation in the operation of the 2 machines is carried out so that both machines operate for the same amount of time.



Models 09, 12 y 18



Model 24



RG10N2(D2S)/BGEF
Included
(CL09111)



OPTIONALS

More information on optionals in "MUNDOCLIMA CONTROL SYSTEMS"

RECOMMENDED

Wired control with Wi-Fi

KJR-120N(X6W)/BGEF
(CL09212)

KJR-120P(X6W)/EF
(Black)
(CL09213)

KJR-120P(X6W)/EF
(White)
(CL09215)

BMS

MD-AC-MBS
(CL99097/
CL99114-116)

MD-AC-KNX
(CL94792 /
CL99094-095)

INBACMID
(CL99222 /
CL99210)

Centralized controller

CCM180A/WS
(CL09300)

CCM30/BKE
(CL92871)

CCM-15(A)
(CL92872)

SPECIFICATIONS

Model			MUCSR-09-H14-I	MUCSR-12-H14-I	MUCSR-18-H14-I	MUCSR-24-H14-I
Set code			CL21413	CL21414	CL21415	CL21416
EAN Code			8432953062118	8432953060527	8432953060534	8432953060541
Cooling	Nominal capacity (min. ~ max.) ^(*)	kW	2,64 (0,36 ~ 3,40)	3,52 (0,85 ~ 4,16)	5,27 (2,90 ~ 5,59)	7,03 (3,29 ~ 7,91)
	Nominal rating ^(**)	kW	0,045	0,045	0,045	0,064
Heating	Nominal capacity (min. ~ max.) ^(*)	kW	2,93 (0,45 ~ 3,61)	3,81 (0,47 ~ 4,34)	5,57 (2,37 ~ 6,10)	7,62 (2,81 ~ 8,94)
	Nominal rating ^(**)	kW	0,045	0,045	0,045	0,064
Model	Body		MUCSR-09-H14-I	MUCSR-12-H14-I	MUCSR-18-H14-I	MUCSR-24-H14-I
	Panel		MUCSR-H14-P1	MUCSR-H14-P1	MUCSR-H14-P1	MUCSR-H14-P2
Code	Body		UI21540	UI21541	UI21542	UI21543
	Panel		UA21540	UA21540	UA21540	UA21543
EAN Code	Body		8432953062101	8432953059101	8432953059118	8432953059125
	Panel		8432953058982	8432953058982	8432953058982	8432953058999
Air flow rate (High / Medium / Low)		m ³ /h	500 / 460 / 400	620 / 520 / 330	660 / 540 / 300	1,247 / 1,118 / 992
Sound pressure (High / Medium / Low)		dB (A)	37 / 35,5 / 33 / 26	42 / 38,5 / 31,5 / 25,5	44 / 41 / 31,5 / 25	45 / 42,5 / 37 / 27,5
Sound power (High)		dB (A)	52	55	59	59
Drain connection (OD)		mm	Ø 25	Ø 25	Ø 25	Ø 25
Drain pump height ^(***)		mm	1,000	1,000	1,000	1,000
Fresh air intake ^(***)		mm	Ø 75	Ø 75	Ø 75	Ø 75
Refrigeration pipes	Liquid	mm (inch)	1/4"	1/4"	1/4"	3/8"
	Gas	mm (inch)	3/8"	3/8"	1/2"	5/8"
Dimensions (Width x Height x Depth)	Body	mm	570 x 245 x 570	570 x 245 x 570	570 x 245 x 570	830 x 205 x 830
	Panel	mm	620 x 50 x 620	620 x 50 x 620	620 x 50 x 620	950 x 75 x 950
Weight	Body	kg	14,6	16,1	16,2	21,6
	Panel	kg	2,7	2,7	2,7	6

Notes:

(*) The nominal capacity may be different depending on the outdoor unit connected and the simultaneity, for more information please consult.

(**) The indicated consumption only refers to the indoor unit, this must be added to the consumption of the corresponding outdoor unit.

(***) Pump height measured from the unit shaft. The elbow is set horizontally at 200 mm maximum.

(****) Inner diameter

* The design and specifications are subject to change without prior notice for product improvement.

** The sound level values correspond to values obtained in an anechoic chamber.

MULTISPLIT Duct Type Indoor Unit MUCR-H14-I Series



HORIZONTAL AND VERTICAL INSTALLATION*



Extra flat duct

Height of the indoor unit: from 200 mm.



Drainage pump

Incorporates drainage pump to facilitate the drainage of the indoor unit.



Complete weekly timer

Sets the weekly operation of the unit.



Configurable return

The air intake can be set up either at the rear or at the bottom of the unit. By default, it is set up at the rear.



Setpoint temperature range adjustment

By means of the KJR-120N wired remote control (supplied), the setpoint temperature can be limited.



Configurable static pressure

Through the new KJR-120N wired remote control, you can adjust the static pressure of the fan automatically or manually, so you can adapt the machine to each installation.



Remote signals (CP)

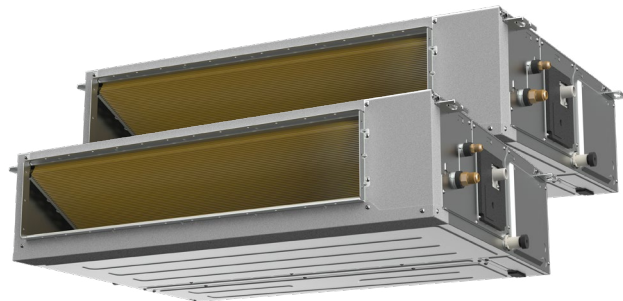
The indoor unit has an ON/OFF input and an alarm and operation output.



Rotation & Back up

This function allows redundant operation in installations with 2 units connected to the same KJR-120N wired control, in the event that one machine does not reach the setpoint temperature, the two machines will automatically start operating together at 24°C in the selected mode.

At the same time a rotation in the operation of the 2 machines is carried out so that both machines operate for the same amount of time.



KJR-120N(X6W)/BGEF
Included
(CL09212)

OPTIONALS

More information on optionals in "MUNDOCLIMA CONTROL SYSTEMS"

Wireless control



RG10A1(F2S)BGEF
(CL97807)

Wired control with Wi-Fi



KJR-120P(X6W)/EF
(Black)
(CL09214)



KJR-120P(X6W)/EF
(White)
(CL09215)



MD-AC-MBS
(CL99097/
CL99114-116)



MD-AC-KNX
(CL94792 /
CL99094-095)



INBACMID
(CL99222 /
CL99210)

BMS



CCM180A/WS
(CL09300)



CCM30/BKE
(CL92871)



CCM-15(A)
(CL92872)

Centralized controller

* Except for models 09 and 12 where only horizontal installation is possible.

SPECIFICATIONS

Model			MUCR-09-H14-I	MUCR-12-H14-I	MUCR-18-H14-I	MUCR-24-H14-I
Code			UI21560	UI21561	UI21562	UI21563
EAN Code			8432953059002	8432953059019	8432953059026	8432953059033
Cooling	Nominal capacity (min. ~ max.) ^{(*)1}	kW	2.64 (0.35 ~ 3.82)	3.52 (0.53 ~ 3.91)	5.28 (1.32 ~ 6.16)	7.09 (3.23 ~ 7.92)
	Nominal rating ^{(*)2}	kW	0.80	0.80	0.80	1.65
Heating	Nominal capacity (min. ~ max.) ^{(*)1}	kW	2.93 (0.94 ~ 3.48)	3.81 (1.00 ~ 4.47)	6.01 (1.50 ~ 6.31)	8.00 (2.79 ~ 8.56)
	Nominal rating ^{(*)2}	kW	0.80	0.80	0.80	1.65
Air flow rate (High / Medium / Low)	m³/h		620 / 540 / 450	660 / 570 / 470	900 / 780 / 650	1,200 / 1,000 / 700
Static pressure	Nominal	Pa	25	25	25	25
	Adjustable	Pa	0 ~ 80	0 ~ 100	0 ~ 160	0 ~ 160
Sound pressure (High / Medium / Low)	dB (A)		35 / 33 / 31	35 / 33 / 31	36.5 / 34 / 31	33.5 / 32.5 / 31
Sound power (High)	dB (A)		52	52	53	56
Drain connection (OD)	mm		Ø 25	Ø 25	Ø 25	Ø 25
Drain pump height ^{(*)3}	mm		1,000	1,000	1,000	1,000
Fresh air intake ^{(*)4}	mm		Ø 92	Ø 92	Ø 100	Ø 100
Refrigeration pipes	Liquid	mm (inch)	1/4"	1/4"	1/4"	3/8"
	Gas	mm (inch)	3/8"	3/8"	1/2"	5/8"
Dimensions (Width x Height x Depth)	mm		700 x 200 x 506	700 x 200 x 506	700 x 245 x 750	1,000 x 245 x 750
Weight	kg		16.6	16.6	24.4	31.8

Notes:

(*)1 The nominal capacity may be different depending on the outdoor unit connected and the simultaneity, for more information please consult.

(*)2 The indicated consumption only refers to the indoor unit, this must be added to the consumption of the corresponding outdoor unit.

(*)3 Pump height measured from the unit shaft. The elbow is set horizontally at 200 mm maximum.

(*)4 Inner diameter

* The design and specifications are subject to change without prior notice for product improvement.

** The sound level values correspond to values obtained in an anechoic chamber.

MULTISPLIT Console Type Indoor Unit MUCNR-H14-I Series

MUNDOCLIMA®
SUPER DC INVERTER



RG10A(F2S)BGEF
Included
(CL09100)

AIRZONE⁽¹⁾
COMPATIBLE



Double air flow
Upper and lower air outlet. In cooling mode only the upper outlet works, while in heating mode both outlets work, thus heating from ground level is achieved.



Modern and stylish design
Only 206 mm deep.



120°
The upper louver allows an adjustment of 120°.



Tangential fans
The indoor unit incorporates a tangential fan at each air outlet, thus minimizing the noise level.



Digital LED display
Equipped with a digital display that shows the setpoint temperature during cooling or heating operation, or the room temperature in ventilation mode.

OPTIONALS

More information on optionals in "MUNDOCLIMA CONTROL SYSTEMS"

Wired control⁽²⁾



KJR-29B1/BK-E
(CL92869)

RECOMMENDED



KJR-120N(X4W)/BGEF⁽¹⁾
(CL09211)



KJR-120P(X6W)/EF⁽¹⁾
(Black)
(CL09214)



KJR-120P(X6W)/EF⁽¹⁾
(White)
(CL09216)

Wired control with WI-FI⁽¹⁾



EU-OSK-105
(CL09001)

Wi-Fi

Centralized control⁽¹⁾



CCM180A/WS⁽¹⁾
(CL09300)



CCM30/BKE⁽¹⁾
(CL92871)



MD-AC-MBS⁽¹⁾
(CL99097/
CL99114-116)



MD-AC-KNX⁽¹⁾
(CL94792 /
CL99094-095)



INBACMID⁽¹⁾
(CL99222 /
CL99210)

BMS⁽¹⁾

Accessories



Multifunction Module
(CL09403)

(1) Multifunction module required.

(2) Connection cable (CL98442) required, not recommended for use with the multifunction module.

SPECIFICATIONS

Model			MUCNR-09-H14-I	MUCNR-12-H14-I	MUCNR-18-H14-I
Code			UI21570	UI21571	UI21572
EAN Code			8432953059347	8432953059354	8432953059361
Cooling	Nominal capacity (min. ~ max.) ^(*)	kW	2,64 (0,36 ~ 3,81)	3,52 (0,76 ~ 4,25)	4,98 (2,64 ~ 5,57)
	Nominal rating ^(**)	kW	0,042	0,042	0,052
Heating	Nominal capacity (min. ~ max.) ^(*)	kW	2,93 (0,44 ~ 3,96)	3,81 (0,45 ~ 4,69)	5,28 (2,20 ~ 6,30)
	Nominal rating ^(**)	kW	0,042	0,042	0,052
Air flow rate (High / Medium / Low)		m ³ /h	600 / 510 / 400	650 / 580 / 490	780 / 690 / 600
Sound pressure (High / Medium / Low)		dB (A)	36,5 / 33,5 / 27,5	37 / 34 / 27 / 23	41 / 38 / 32 / 26
Sound power (High)		dB (A)	50	54	55
Drain connection (OD)		mm	Ø 16	Ø 16	Ø 16
Refrigeration pipes	Liquid	mm (inch)	1/4"	1/4"	1/4"
	Gas	mm (inch)	3/8"	3/8"	1/2"
Dimensions (Width x Height x Depth)		mm	794 x 621 x 206	794 x 621 x 206	794 x 621 x 206
Weight		kg	14,9	14,9	14,9

Notes:

(*) The nominal capacity may be different depending on the outdoor unit connected and the simultaneity, for more information please consult.

(**) The indicated consumption only refers to the indoor unit, this must be added to the consumption of the corresponding outdoor unit.

* The design and specifications are subject to change without prior notice for product improvement.





** The sound level values correspond to values obtained in an anechoic chamber.

MULTISPLIT

Multisplit selection

STEP 1

Select the power that best suits each of the rooms to be air-conditioned. The following table shows the different powers so you can select the most suitable model for your needs.

Model	9	12	18	24
Capacity	2.6 kW	3.5 kW	5.2 kW	7.0 kW
WALL SPLIT 	MUPR-09-H11-I UI20055	MUPR-12-H11-I UI20056	MUPR-18-H11-I UI20057	MUPR-24-H11-I UI20058
	MUPR-09-H14X-I UI20060	MUPR-12-H14X-I UI20061	MUPR-18-H14X-I UI20062	MUPR-24-H14X-I UI20063
CASSETTE 	MUCSR-09-H14-I CL21413	MUCSR-12-H14-I CL21414	MUCSR-18-H14-I CL21415	MUCSR-24-H14-I CL21416
DUCT 	MUCR-09-H14-I UI21560	MUCR-12-H14-I UI21561	MUCR-18-H14-I UI21562	MUCR-24-H14-I UI21563
CONSOLE 	MUCNR-09-H14-I UI21570	MUCNR-12-H14-I UI21571	MUCNR-18-H14-I UI21572	-

STEP 2

Select the outdoor unit that best suits to the chosen combination of indoor units.

Model	2 x 1		3 x 1			4 x 1		5 x 1
	MUEX-14-H11.2	MUEX-18-H11.2	MUEX-18-H11.3	MUEX-21-H11.3	MUEX-27-H11.3	MUEX-28-H11.4	MUEX-36-H11.4	MUEX-42-H11.5
Code	CL21400	CL21401	CL21402	CL21403	CL21404	CL21405	CL21406	CL21407
1 ROOM	9 12 18	9 12 18	9 12 18	9 12 18	9 12 18	9 12 18 24	9 12 18 24	9 12 18 24
2 ROOMS	9+9 9+12	9+9 9+12 9+18 12+12 12+18	9+9 9+12 9+18 12+12 12+18	9+9 9+12 9+18 12+12 12+18	9+9 9+12 9+18 12+12 12+18	9+9 9+12 9+18 9+24 12+12 12+18 12+24	9+9 9+12 9+18 9+24 12+12 12+18 12+24	9+9 9+12 9+18 9+24 12+12 12+18 12+24
3 ROOMS	-	-	9+9+9	9+9+9	9+9+9 9+9+18 9+9+12 9+12+12 12+12+12	9+9+9 9+9+12 9+9+18 9+12+12 9+12+18 9+12+24 12+12+12 12+12+18	9+9+9 9+9+12 9+9+18 9+9+24 9+12+12 9+12+18 9+12+24 12+12+12 12+12+18 12+12+24	9+9+9 9+9+12 9+9+18 9+9+24 9+12+12 9+12+18 9+12+24 12+12+12 12+12+18 12+12+24
4 ROOMS	-	-	-	-	-	9+9+9+9 9+9+9+12 9+9+9+18 9+9+12+12 9+9+12+18	9+9+9+9 9+9+9+12 9+9+9+18 9+9+12+12 9+9+12+18 9+12+12+12 12+12+12+12	9+9+9+9 9+9+9+12 9+9+9+18 9+9+12+12 9+9+12+18 9+12+12+12 9+12+12+18 12+12+12+12 12+12+12+18 12+12+12+24
5 ROOMS	-	-	-	-	-	-	-	9+9+9+9+9 9+9+9+9+12 9+9+9+9+18 9+9+9+12+12 9+9+9+12+18 9+9+9+12+24 9+9+9+12+12+12 9+9+12+12+12+12 9+9+12+12+12+18 9+12+12+12+12+12 12+12+12+12+12+12 12+12+12+12+12+18

CAPACITY TABLE ACCORDING TO COMBINATION

To consult the capacity table according to combination, access the following QR code:

