

# AIR DESTRATIFIER

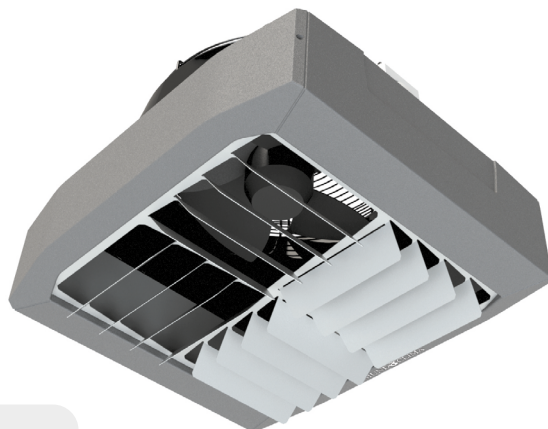
## MUD-DT Series

MUND<sup>CLIMA</sup>

### APPLICATIONS

The destratifiers are designed for premises such as industrial buildings, supermarkets, public buildings, etc., which have a high height, where heat can be stratified in the upper part.

The main function of the destratifier is to prevent the accumulation of hot air in the upper areas of the room. The fan draws in hot air and forces its flow into the occupied zone. This solution reduces heat loss through the ceiling and results in faster heating of the building.



### FEATURES



#### FAN

Equipped with a 3-speed fan, it is possible to control the operation and effectiveness of the air heater.



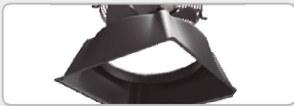
#### EPP CASE

Modern design with a strong and lightweight expandable polypropylene (EPP) casing.



#### AIR DEFLECTORS

The air outlet is equipped with adjustable deflectors to direct the air where it's needed.



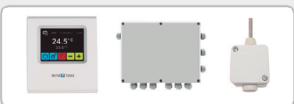
#### AIR INJECTOR

The fan is located in a special air injector in order to reduce noise and increase the efficiency of the unit.



#### THERMOSTAT

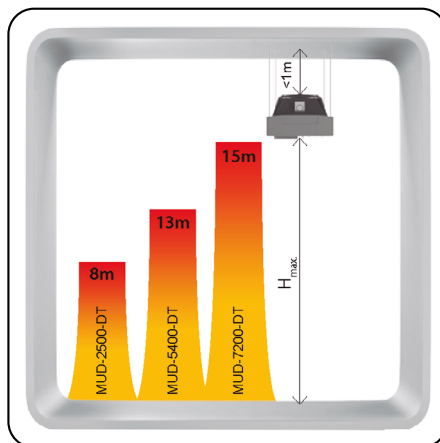
Built-in 3-speed thermostat, making the operation easy right from the start.



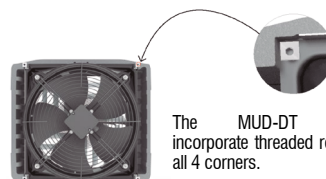
#### MULTIPLE OPTIONS

Possibility of integrating the destratifier into a centralized control system and even combining its operation with MUAT-FB destratifiers.

### INSTALLATION



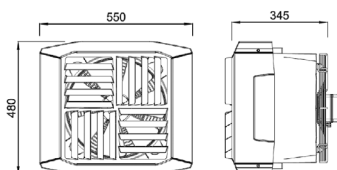
$H_{max}$  - Maximum height when deflectors are installed vertically



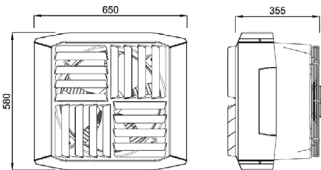
The MUD-DT destratifiers incorporate threaded rod holders in all 4 corners.

### DIMENSIONS

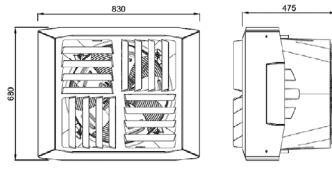
#### MUD-2500-DT



#### MUD-5400-DT



#### MUD-7200-DT



## MUD-DT Series AIR DESTRATIFIER

MUNDCLIMA®

### TECHNICAL SPECIFICATIONS

Model			MUD-2500-DT			MUD-5400-DT			MUD-7200-DT		
Code			VE09211			VE09212			VE09213		
Speed			LOW	MEDIUM	HIGH	LOW	MEDIUM	HIGH	LOW	MEDIUM	HIGH
Air flow rate		m³/h	1,500	2,000	2,500	3,100	4,500	5,400	3,900	6,100	7,200
Max. consumption		W	65	85	110	220	280	320	260	350	450
Current		A	0.3	0.4	0.5	1.0	1.2	1.4	1.4	1.5	2.0
Sound pressure level (*1)		dB (A)	38	44	49	45	50	55	50	57	62
Installation height	max. (*2)	m	8			13			15		
	min.	m	6			6			6		
Power supply		V / Hz	230 / 50								
Protection degree			IP 54								
Color			Grey (RAL 9007)								
Dimensions (W x H x D)		mm	550 x 480 x 345			650 x 580 x 355			830 x 680 x 475		
Weight		kg	8.9			13.9			19.5		

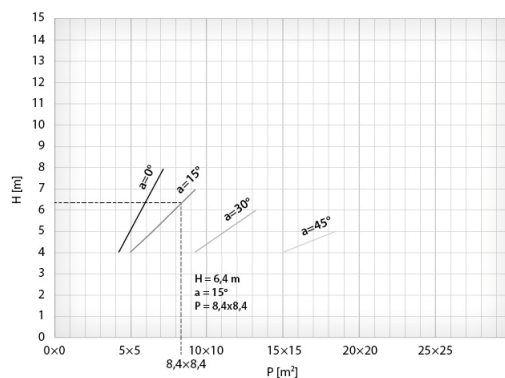
Notes: (\*1) Sound pressure level measured at a 5 m distance from the unit, in a room with average sound absorption capacity and a 1500 m³ volume.

(\*2) With all blades in vertical position directed to the ground.

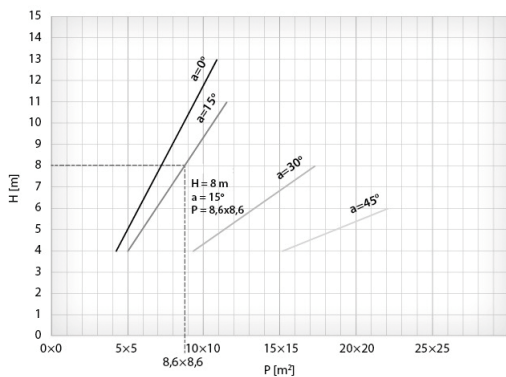
H - Height [m]  
P - Floor area [m²]  
a - Blades angle



#### MUD-2500-DT



#### MUD-5400-DT



#### MUD-7200-DT

