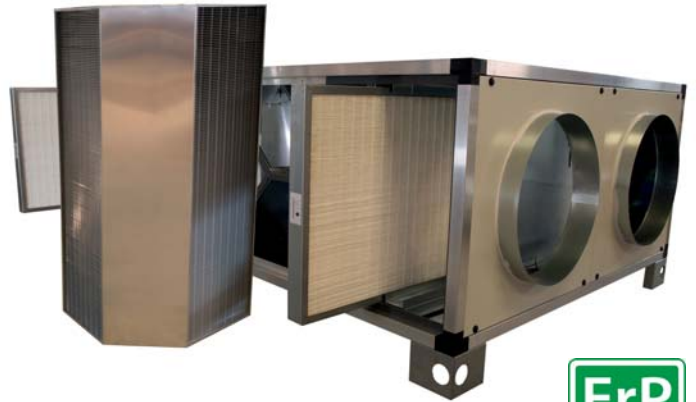


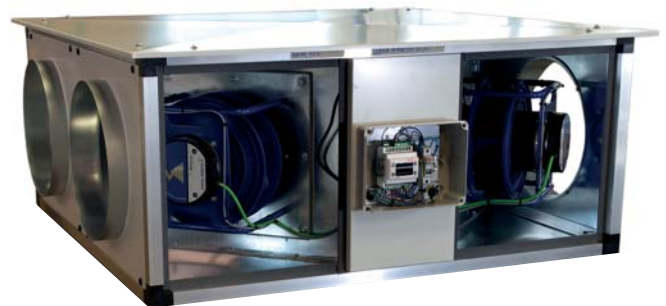
HEAT RECOVERY UNIT MU-RECO EC Series

FEATURES

- Heat recovery unit according to Erp 2018.
- High efficiency cross flow exchanger certified by Eurovent.
- Air flow rates between 500 m³/h and 6000 m³/h.
- Structure casing formed by closed extruded aluminum profiles with polyamide corners that give it great resistance and high sealing.
- Sandwich panels with rock wool insulation density 40 kg/m³, Class M1, average thickness 25 mm.
- All equipment for indoor installation is supplied with handles for hanging (not mounted), models 4000 and 6000 also have ground support feet.
- All equipment for outdoor installation (with open-air roof) is supplied with floor support feet.
- Models 500 to 3000 are single-phase and models 4000 and 6000 are three-phase.
- Condensate tray in stainless steel.
- Electronic brushless motors with EC technology for low power consumption.
- Automatic fan control.
- By-pass with integrated standard temperature sensors.
- Easily removable standard filters.
- Alarm due to dirty filters.
- Basic or CO₂ control, with Eliwel FREE SMART SMD4500 standard regulator, wired and configured.





Regulator
Eliwel FREE SMART
SMD4500



OPTIONALS

- Wired wall control SWK21.
- Pressure transducer (PID) for constant flow control (basic control only).
- Weatherproof roof for outdoor installation.

MU-RECO EC Model	OPTIONALS				
	Roof		SWK21 Control	Set 2 Trans. Pressure	
	Horizontal	Vertical			
500	LC 41 520	LC 41 530	 LC 41 527	 LC 41 528	
1000	LC 41 521	LC 41 531			
1500	LC 41 522	LC 41 532			
2000	LC 41 523	LC 41 533			
3000	LC 41 524	LC 41 534			
4000	LC 41 525	LC 41 535			
6000	LC 41 526	LC 41 536			

MU-RECO EC Series

SPECIFICATIONS

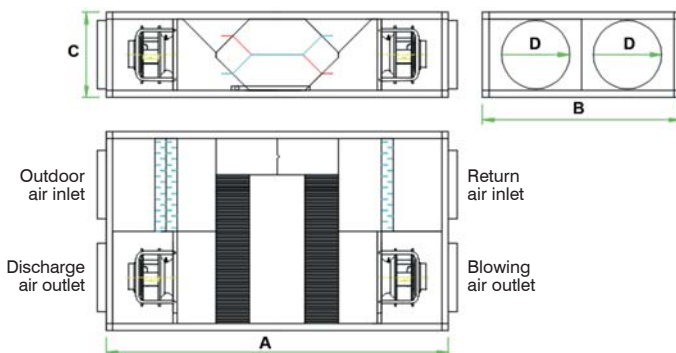
Model	Flow rate (m ³ /h)	Motor Power (kW)	Max. current consump. (A)		Performance ⁽¹⁾ (%)	Recovered power ⁽¹⁾ (kW)	Sound Level ⁽²⁾ (dB)
			230V 50Hz	400V 50Hz			
MU-RECO 500 EC	500	2x 0,17	2x 1,3	–	85,05	3,83	47,6
MU-RECO 1000 EC	1000	2x 0,17	2x 1,4	–	86,46	7,6	48,2
MU-RECO 1500 EC	1500	2x 0,5	2x 2,5	–	84,46	11,12	40,5
MU-RECO 2000 EC	2000	2x 0,78	2x 4	–	84,09	14,5	46,7
MU-RECO 3000 EC	3000	2x 0,78	2x 3,9	–	83,85	22,01	51,6
MU-RECO 4000 EC	4000	2x 2,5	–	2x 2,2	86,06	25,06	57,3
MU-RECO 6000 EC	6000	2x 2,4	–	2x 3,9	85,58	37,37	54,4

Notes:

⁽¹⁾ Performance and recovered power for the following conditions: Nominal air flow rate and indoor/outdoor temperature 22/-5 °C.

⁽²⁾ Sound pressure at 1,5 m in open field at nominal flow rate and maximum pressure.

DIMENSIONS



Model	A (mm)	B (mm)	C (mm)	D (Ø mm)	Weight (kg)
MU-RECO 500 EC	1275	612	331	200	65
MU-RECO 1000 EC	1505	870	372	300	117
MU-RECO 1500 EC	1885	1015	454	315	167
MU-RECO 2000 EC	1885	1225	454	355	191
MU-RECO 3000 EC	2000	1240	593	400	236
MU-RECO 4000 EC	1885	1225	848	450	277
MU-RECO 6000 EC	2000	1240	1126	500	372

ELEMENTS OF CONTROL

Control	Basic	CO ₂
Return temp. probe	✓	✓
Outdoor air temp. probe	✓	✓
Pressure switches	✓	✓
Modbus communication	✓	✓
Time scheduling	✓	✓
Motorized BT-PASS Gate	✓	✓
Manual selection variable speed	✓	✓
CO ₂ regulator + CO ₂ quality probe		✓
Alarm of dirty filters	✓	✓
Wired remote control SWK21	■	■
Pressure transducer PID	■	

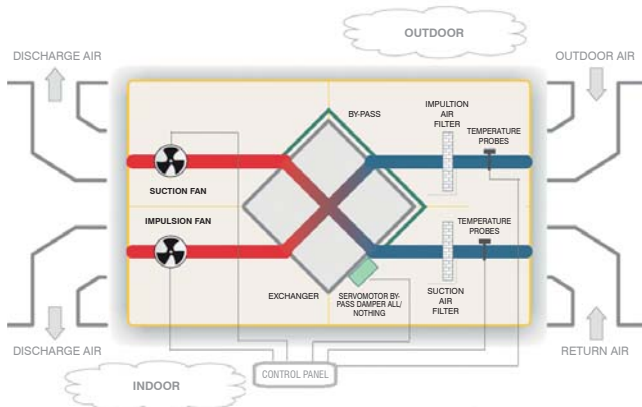
✓ Included
■ Optional

RECOVERY SELECTION

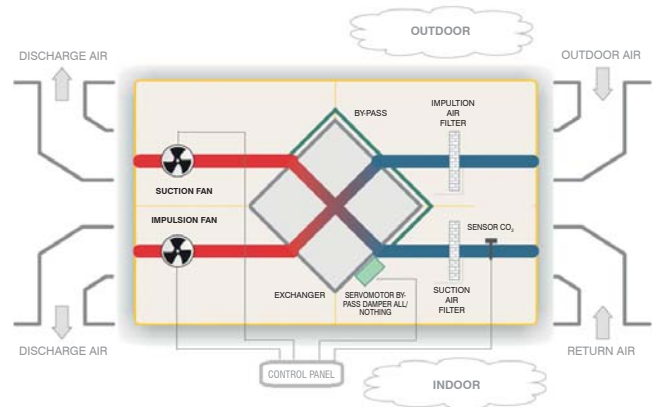
Configuration	Control	Model	F7/F7	F6-F8/F6	F7-F9/F7
HORIZONTAL	BASIC	MU-RECO 500 EC-H	CL 41 600	CL 41 610	CL 41 620
		MU-RECO 1000 EC-H	CL 41 601	CL 41 611	CL 41 621
		MU-RECO 1500 EC-H	CL 41 602	CL 41 612	CL 41 622
		MU-RECO 2000 EC-H	CL 41 603	CL 41 613	CL 41 623
		MU-RECO 3000 EC-H	CL 41 604	CL 41 614	CL 41 624
		MU-RECO 4000 EC-H	CL 41 605	CL 41 615	CL 41 625
	MU-RECO 6000 EC-H	CL 41 606	CL 41 616	CL 41 626	
	CO ₂	MU-RECO 500 EC-HCO2	CL 41 630	CL 41 640	CL 41 650
		MU-RECO 1000 EC-HCO2	CL 41 631	CL 41 641	CL 41 651
		MU-RECO 1500 EC-HCO2	CL 41 632	CL 41 642	CL 41 652
		MU-RECO 2000 EC-HCO2	CL 41 633	CL 41 643	CL 41 653
		MU-RECO 3000 EC-HCO2	CL 41 634	CL 41 644	CL 41 654
		MU-RECO 4000 EC-HCO2	CL 41 635	CL 41 645	CL 41 655
		MU-RECO 6000 EC-HCO2	CL 41 636	CL 41 646	CL 41 656
VERTICAL		BASIC	MU-RECO 500 EC-V	CL 41 520	CL 41 530
	MU-RECO 1000 EC-V		CL 41 521	CL 41 531	CL 41 541
	MU-RECO 1500 EC-V		CL 41 522	CL 41 532	CL 41 542
	MU-RECO 2000 EC-V		CL 41 523	CL 41 533	CL 41 543
	MU-RECO 3000 EC-V		CL 41 524	CL 41 534	CL 41 544
	MU-RECO 4000 EC-V		CL 41 525	CL 41 535	CL 41 545
	MU-RECO 6000 EC-V	CL 41 526	CL 41 536	CL 41 546	
	CO ₂	MU-RECO 500 EC-VC02	CL 41 550	CL 41 560	CL 41 570
		MU-RECO 1000 EC-VC02	CL 41 551	CL 41 561	CL 41 571
		MU-RECO 1500 EC-VC02	CL 41 552	CL 41 562	CL 41 572
		MU-RECO 2000 EC-VC02	CL 41 553	CL 41 563	CL 41 573
		MU-RECO 3000 EC-VC02	CL 41 554	CL 41 564	CL 41 574
		MU-RECO 4000 EC-VC02	CL 41 555	CL 41 565	CL 41 575
		MU-RECO 6000 EC-VC02	CL 41 556	CL 41 566	CL 41 576

MU-RECO EC Series

SCHEME WITH BASIC CONTROL



SCHEME WITH CO₂ CONTROL



Note: The above diagrams are illustrative and do not represent the actual configuration of the equipment.

CHARACTERISTIC CURVES

