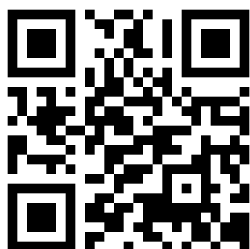


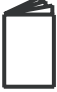



MODULAR CHILLER MUENR-H7

Installation & Owner's manual
and information requirements

MUENR-H7T & MUENR-H7T(K)



ACCESSORIES

Unit	Installation & Operation Manual	Temperature testing components of total water outlet	Transformer	Installation manual of wired controller
Qty.	1	1	1	1
Shape				
Purpose	_____	Use for installation (only need for setting the main module)		



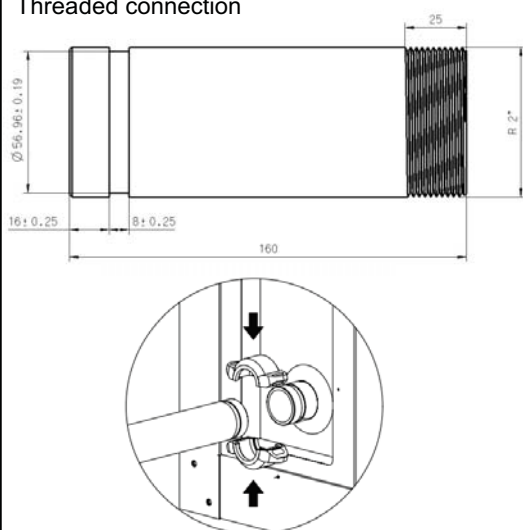
WARNING: NGI safety valve warranty period is 24 months. Under the specified conditions, if flexible sealing parts is used, the safety valve life expectancy is 24 to 36 months, if metal or PIFE sealing components is used, the average life expectancy is 36 to 48 months. Visual inspection is needed after that period, maintenance people should check the appearance of the valve body and the operating environment. If the valve body is not obvious corrosion, cracks, dirt, damage, then the valve can be used continually. Otherwise, please contact your supplier for spare part.

OPTIONALS

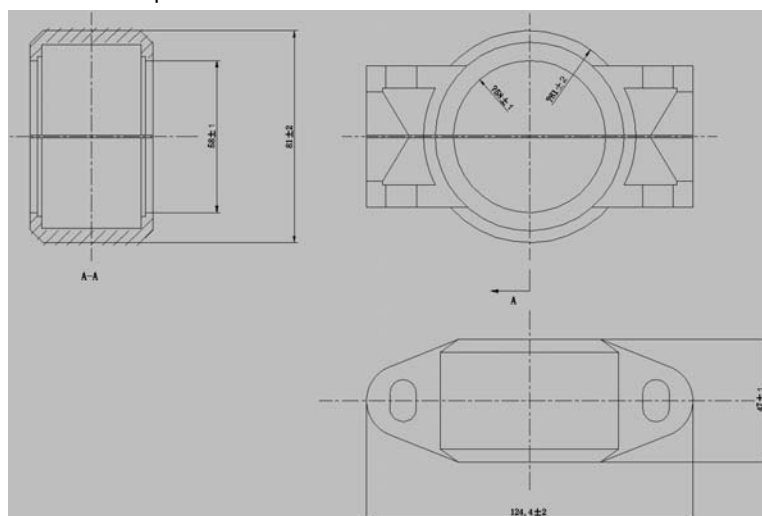
MUENR-60-H7T and MUENR-60-H7T(K) models, the hydraulic connection is of 2" Victaulic type. With the following accessory you can convert the connection to Male thread 2"(DN50).

Code: CL97296

Threaded connection

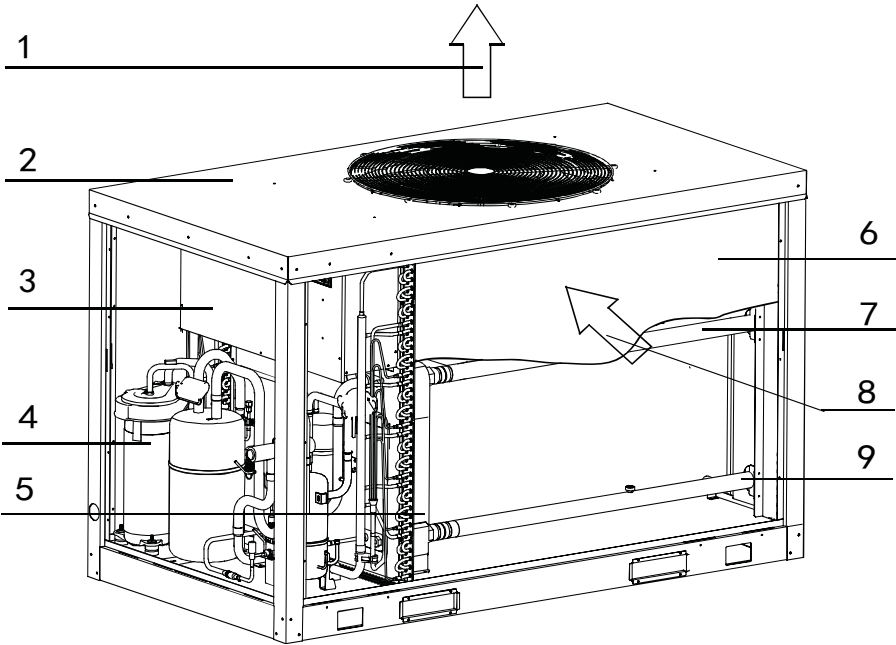


Victaulic clamp

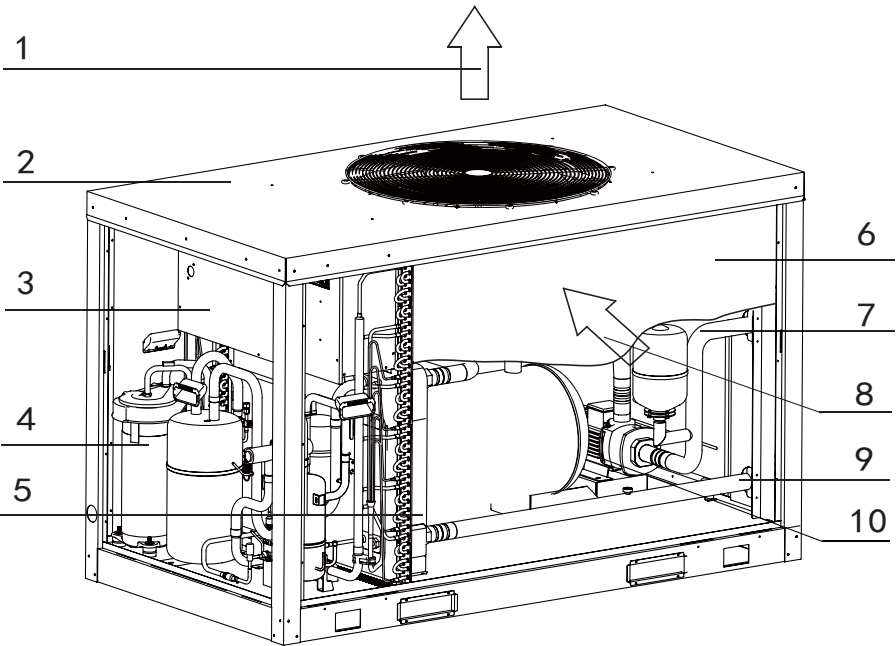


MAIN PARTS OF THE UNIT

1) MUENR-30-H7T



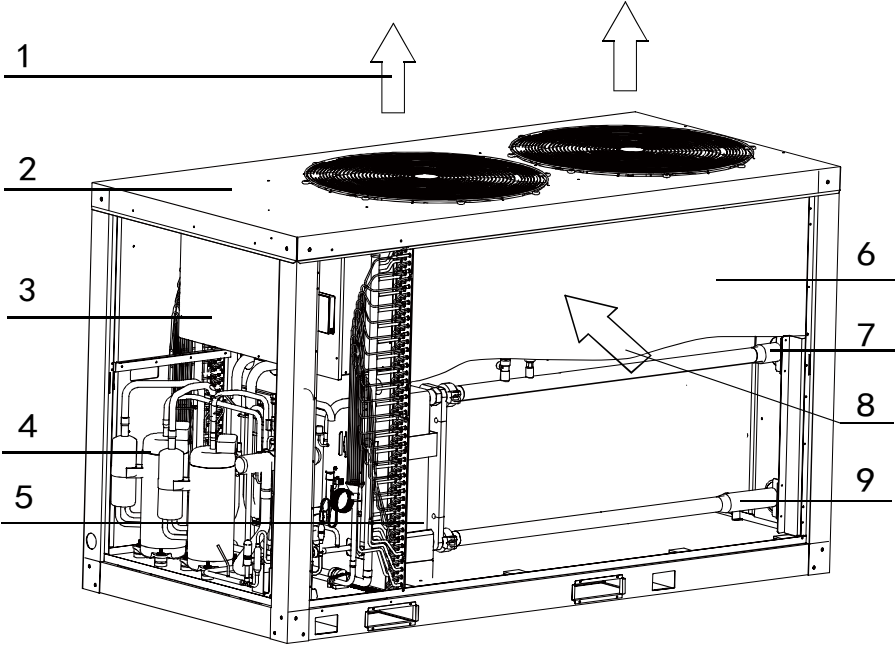
2) MUENR-30-H7T(K); MUENR-30-H7T(K2)



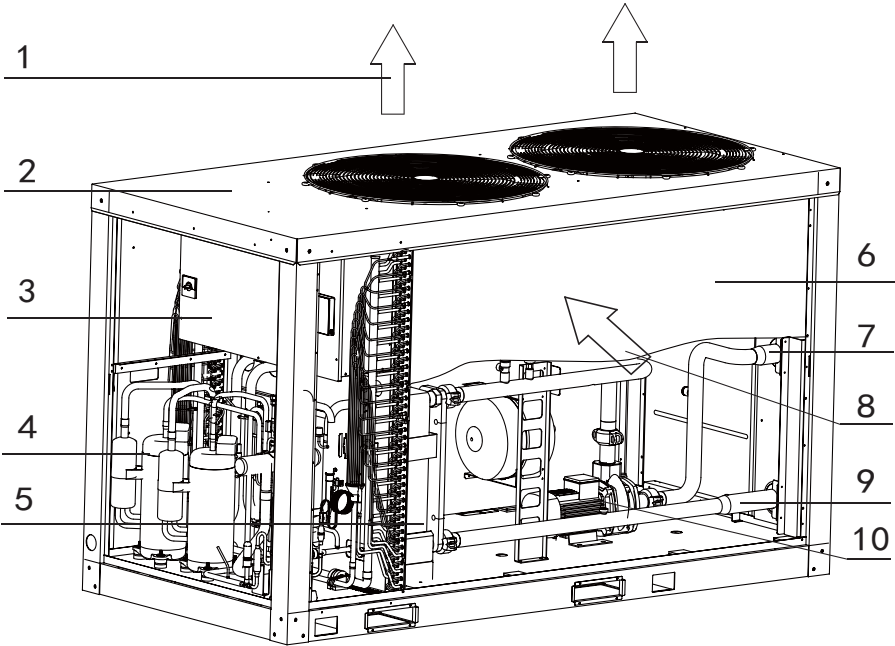
NO.	1	2	3	4	5	6	7
NAME	Air outlet	Top cover	Electric control box	Compressor	Evaporator	Condenser	Water intlet
NO.	8	9	10				
NAME	Air inlet	Water outlet	Pump				

Note: The pictures are only for your reference.

3) MUENR-60-H7T



4) MUENR-60-H7T(K)



NO.	1	2	3	4	5	6	7
NAME	Air outlet	Top cover	Electric control box	Compressor	Evaporator	Condenser	Water inlet
NO.	8	9	10				
NAME	Air inlet	Water outlet	Pump				

Note: The pictures are only for your reference.

OPERATION & PERFORMANCE

Performance characteristics of the unit

The air-cooled heat pump Modular unit is composed of one or more modules. Each module has its own independent electric control unit, and the electric control units of modules conduct information exchange through communication network. The air-cooled heat pump Modular unit is characteristics of compact structure and easy transportation and lifting, and in the meanwhile, it also saves facilities, including cooling tower, cooling pump, and so on, for the user, and reduces installation cost.

The units provide central air handling devices or terminal equipment with chilled water or hot water. The unit is a completely independent entirety type one, which is designed to be installed outdoors (on the ground or the roof). Each unit includes such main parts as high-efficient and low-noise Modular compressor, air-cooled condenser, shell and tube (or plate) evaporator, micro-computer control center, and so on. These parts are installed on steel structure base, so they are sound and durable.

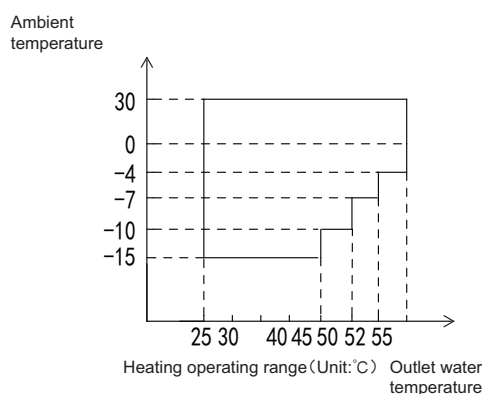
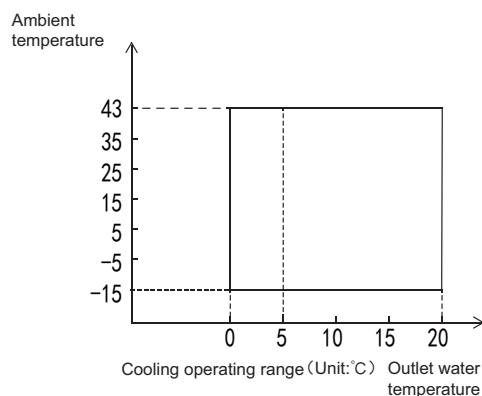
The unit applies Chinese micro-computer control system, which can automatically conduct energy control according to the magnitude of load, to achieve optimal matching and thus actually realizing optimal energy-saving operation. The product is Modularized unit, and parallel connection of 16 modules can be realized at most, so the user can adopt module combination according his own demands. The product can be widely applied in air-conditioning engineering of various newly-built and rebuilt industrial and civil buildings, such as restaurant, hotel, apartment, office building, hospital, industrial plant, and so on. The air-cooled heat pump Modular unit is the best choice for the place which has high requirement in noise and ambient environment and which is short of water.

The A-weighted sound pressure level is below 70 dB.

Use conditions of the unit

a. The standard voltage of power supply is 380-415V 3N~50Hz, the minimum allowable voltage is 342V, and the maximum voltage is 456V.

b. To maintain better performance, please operate the unit under the following outdoor temperature:



If the user requires the unit to operate under the outlet water temperature is lower than the minimum setting value mentioned above, be sure to make the requirement to the dealer or our maintenance center, and necessary protective measures should be taken before the unit is used.

CONTENTS	PAGE
PRECAUTIONS	
TRANSPORTATION	
INSTALLATION OF THE UNIT	
WATER SYSTEM INSTALLATION	
ELECTRIC WIRING	
TRIAL RUN	
USE	
MAINTENANCE AND UPKEEP	
APPLICABLE MODELS AND MAIN PARAMETERS	
ATTACHED PICTURE I	
ATTACHED PICTURE II	

1. PRECAUTIONS

To prevent injury to the user or other people and property damage, the following instructions must be followed. Incorrect operation due to ignoring of instructions may cause harm or damage.

The safety precautions listed here are divided into two categories. In either case, important safety information is listed which must be read carefully.



WARNING

Failure to observe a warning may result in death.



CAUTION

Failure to observe a caution may result injury or damage to the equipment.



WARNING

- **Ask your dealer for installation of the air conditioner.**
Incomplete installation performed by yourself may result in a water leakage, electric shock, and fire.
- **Ask your dealer for improvement, repair, and maintenance.**
Incomplete improvement, repair, and maintenance may result in a water leakage, electric shock, and fire.
- **In order to avoid electric shock, fire or injury, or if you detect any abnormality such as smell of fire, turn off the power supply and call your dealer for instructions.**
- **Never replace a fuse with that of wrong rated current or other wires when a fuse blows out.**
Use of wire or copper wire may cause the unit to break down or cause a fire.
- **Do not insert fingers, rods or other objects into the air inlet or outlet.**
When the fan is rotating at high speed, it will cause injury.
- **Never use a flammable spray such as hair spray, lacquer or paint near the unit.**
It may cause a fire.
- If the supply cord is damaged, it must be replaced by the manufacturer, its service agent or similarly qualified persons in order to avoid a hazard.

- **Never inspect or service the unit by yourself.**
Ask a qualified service person to perform this work.
- **Do not dispose this product as unsorted municipal waste. Collection of such waste separately for special treatment is necessary.**
- **Keep far away from high-frequency equipment.**
- **Keep away from the following places:**
a place where it is full of oil gas; places where salty air surrounding (near the coast); a place where is caustic gas (the sulfide in hot spring). Location in the following places may cause malfunction or shorten the life span of the machine.
- **In the case of extremely strong wind, please prevent the air from flowing backwards into the outdoor unit.**
- **Snow canopy is necessary in snowfall places on the outdoor unit. Please consult the local dealer for details.**
- **In the frequent thunderstruck place, lightning proof actions should be taken.**
- **To prevent refrigerant leak, contact your dealer.**
When the system is installed and runs in a small room, it is required to keep the concentration of the refrigerant, if by any chance coming out, below the limit. Otherwise, oxygen in the room may be affected, resulting in a serious accident.
- **The refrigerant in the air conditioner is safe and normally does not leak.**
If the refrigerant leaks in the room, contact with a fire of a burner, a heater or a cooker may result in a harmful gas.
- **Turn off any combustible heating devices, ventilate the room, and contact the dealer where you purchased the unit.**
Do not use the air conditioner until a service person confirms that the portion where the refrigerant leaks is repaired.
- This appliance can be used by children aged from 8 years and above and persons with reduced physical, sensory or mental capabilities or lack of experience and knowledge if they have been given supervision or instruction concerning use of the appliance in a safe way and understand the hazards involved. Children shall not play with the appliance. Cleaning and user maintenance shall not be made by children without supervision.



CAUTION

- **This appliance is intended to be used by expert or trained users in shops, in light industry and on farms, or for commercial use by lay persons.**
- **Do not use the air conditioner for other purposes.**
In order to avoid any quality deterioration, do not use the unit for cooling precision instruments, food, plants, animals or works of art.
- **Before cleaning, be sure to stop the operation, turn the breaker off or pull out the supply cord.**
Otherwise, an electric shock and injury may result.
- **In order to avoid electric shock or fire, make sure that an earth leak detector is installed.**
- **Be sure the air conditioner is grounded.**
In order to avoid electric shock, make sure that the unit is grounded and that the earth wire is not connected to gas or water pipe, lightning conductor or telephone earth wire.
- **In order to avoid injury, do not remove the fan guard of the outdoor unit.**

- **Do not operate the air conditioner with a wet hand.**
An electric shock may happen.
- **Do not touch the heat exchanger fins.**
These fins are sharp and could result in cutting injuries.
- **After a long use, check the unit stand and fitting for damage.**
If damaged, the unit may fall and result in injury.
- **To avoid oxygen deficiency, ventilate the room sufficiently if equipment with burner is used together with the air conditioner.**
- **Arrange the drain hose to ensure smooth drainage.**
Incomplete drainage may cause wetting of the building, furniture etc.
- **Never expose little children, plants or animals directly to the air flow.**
Adverse influence to little children, animals and plants may result.
- **Notice to avoid places where operation noise may easily be spread away or be enhanced.**
- **Noise can be amplified by anything blocking the air outlet of outdoor unit.**
- Choose a proper place that the noise and hot or cold wind blown out of the outdoor unit will not bring inconvenience to your neighbors and not affect the growth or animal or plant.
- Recommending locate and operate the equipment at the altitude height not exceeded than 1000m.
- Endurable temperature during transportation is $-25^{\circ}\text{C} \sim 43^{\circ}\text{C}$. Such equipment could endure 65°C of the maximum temperature in 24hrs.
- Do not allow a child to mount on the outdoor unit or avoid placing any object on it.
Falling or tumbling may result in injury.
- Do not operate the air conditioner when using a room fumigation - type insecticide.
Failure to observe could cause the chemicals to become deposited in the unit, which could endanger the health of those who are hypersensitive to chemicals.
- Do not place appliances which produce open fire in places exposed to the air flow from the unit or under the indoor unit.
It may cause incomplete combustion or deformation of the unit due to the heat.
- Do not install the air conditioner at any place where flammable gas may leak out.
If the gas leaks out and stays around the air conditioner, a fire may break out.
- The appliance is not intended for use by young children or infirm persons without supervision.
- Young children should be supervised to ensure that they do not play with the appliance.

2. TRANSPORTATION

■ Handling of the unit

The angle of inclination should not be more than 15° when carrying the unit, to avoid overturn of the unit.

a. Rolling handling: several rolling rods of the same size are placed under the base of the unit, and the length of each rod must be more than the outer frame of the base and suitable for balancing of the unit.

b. Lifting: the strength lifting rope (belt) can bear should be 4 times the weight of the unit. Check the lifting hook and ensure that it is firmly attached to the unit. To avoid damages to the unit, the contact position of the unit and lifting rope should be provided with an at least 50mm thick wood block, cloth or hard paper. Any person is not allowed to stand below the unit when lifting it.

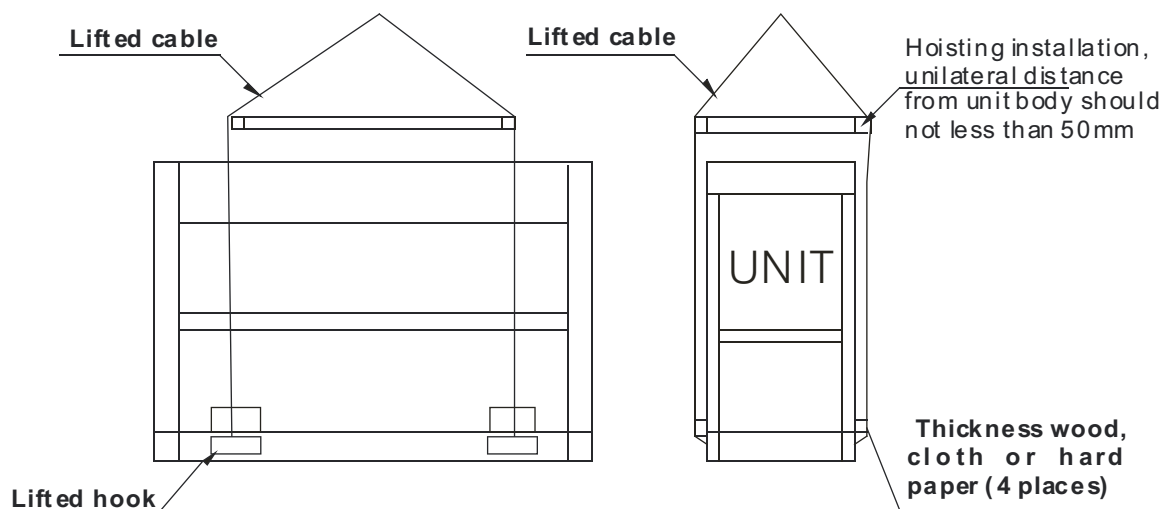


Fig. 2-1 Lifting of the unit

3. INSTALLATION OF THE UNIT

3.1 Selection of installation sites

3.1.1 The unit can be installed on the ground or on the suitable roof, but enough ventilation volume should be ensured in both cases.

3.1.2 The unit should not be installed where noise and vibration are required to a certain extent.

3.1.3 The installed unit should be sheltered from direct sunlight as much as possible, and be far away from boiler flues and ambient air which may erode condenser coils and copper tube parts of the unit.

3.1.4 If the installed unit can be approached by unauthorized persons, safety measures of isolation should be taken, such as rail guards. These measures will avoid artificial damages and accidental damages, and prevent the control boxes from being opened leading to exposure of electric components in operation.

3.1.5 The height of the installation foundation for the unit should not be less than 300mm, and floor drains are required in installation sites, to ensure smooth drainage and remove any seepers.

3.1.6 In case of installation on the ground, the steel base of the unit should be located on the concrete foundation, and the concrete plinth should extend below frozen soil layer. The foundation of the unit should not be connected to the foundation of the building, to avoid affecting the people due to transfer of noise and vibration. The base of the unit is provided with installation holes, which can be used to connect the unit and the foundation firmly.

3.1.7 In case of installation on the roof, the roof must possess enough strength to sustain weight of the unit and maintenance personnel. The unit can be supported on concrete foundations or channel steel frames similar to those used in the unit installation on the ground. The load-bearing channel steel must be in alignment with the installation holes of the unit damper, and the channel steel should possess enough width for installing the damper.

3.1.8 Consult the building contractor, the architectural designer or other specialists about the cases with special installation requirements.



NOTE

The selected installation site of the unit should facilitate connection of water pipes and wires, and be free from water inlet of oil fume, steam or other heat sources. Besides, the noise of the unit and cold and hot air should not influence the surrounding environment.

3.2 Outline dimensional drawing

3.2.1 Model 30

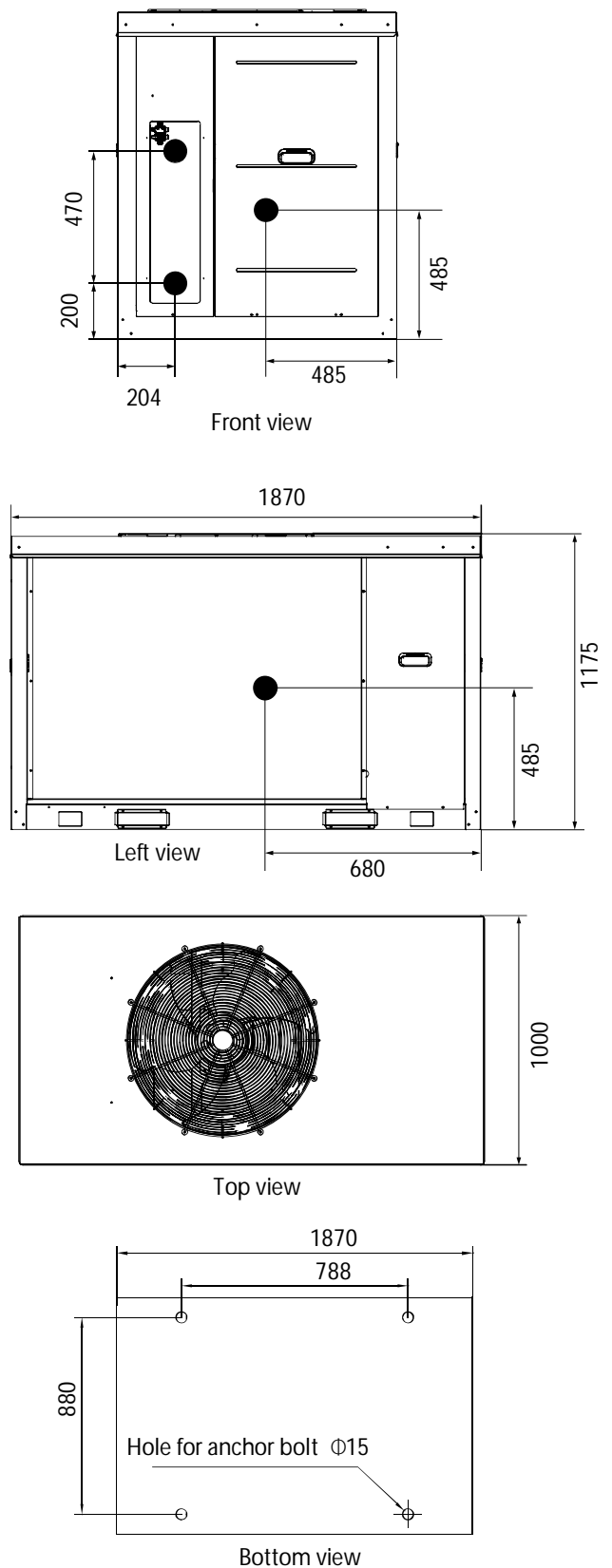


Fig. 3-1

3.2.2 Model 60

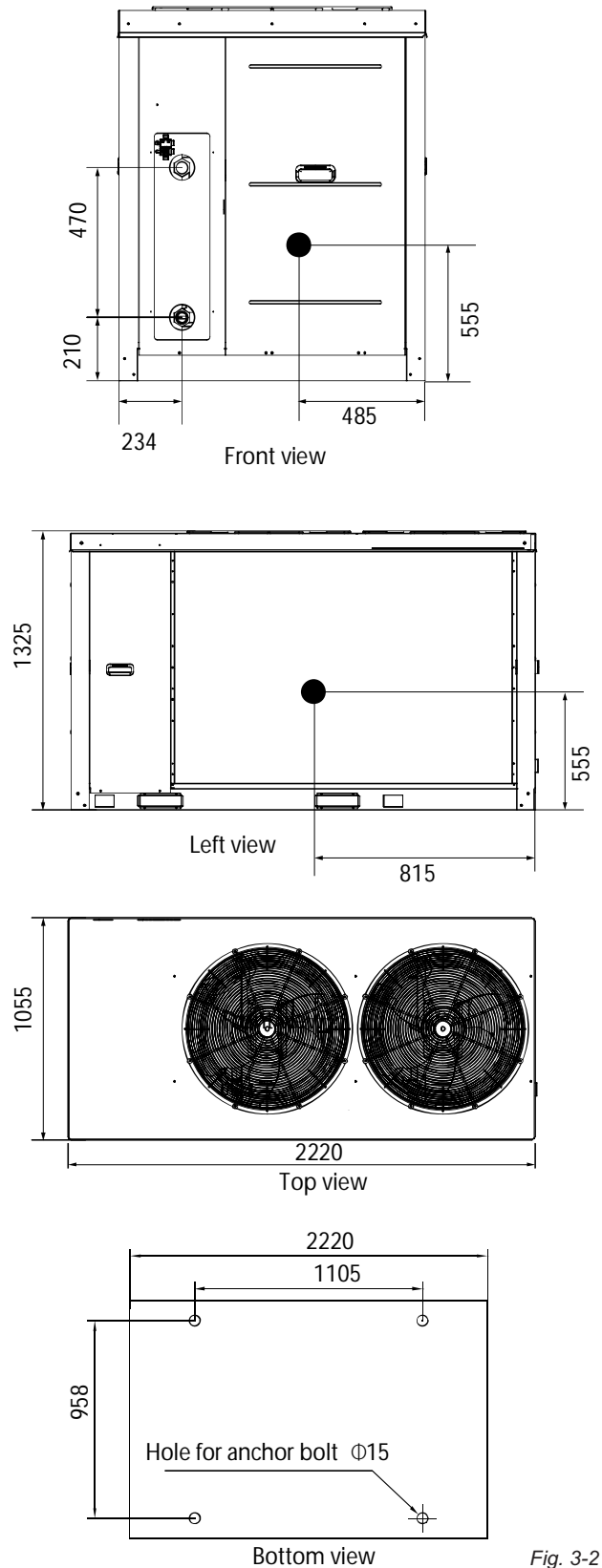


Fig. 3-2

NOTE

- After installing the spring damper, the total height of the unit will increase by 135mm or so.
- The ports of inlet and outlet pipes should be flange ports, and flanges should be hubbed slip-on-welding steel pipe flanges.

3.3 Requirements of arrangement space of the unit

3.3.1 Requirements of arrangement space of the unit

- 3.3.1.1 To ensure adequate airflow entering the condenser, the influence of descending airflow caused by the high-rise buildings around upon the unit should be taken into account when installing the unit.
- 3.3.1.2 If the unit is installed where the flowing speed of air is high, such as on the exposed roof, the measures including sunk fence and Persian blinds can be taken, to prevent the turbulent flow from disturbing the air entering the unit. If the unit needs to be provided with sunk fence, the height of the latter should not be more than that of the former; if Persian blinds are required, the total loss of static pressure should be less than the static pressure outside the fan. The space between the unit and sunk fence or Persian blinds should also meet the requirement of the minimum installation space of the unit.
- 3.3.1.3 If the unit needs to operate in winter, and the installation site may be covered by snow, the unit should be located higher than the snow surface, to ensure that air flows through the coils smoothly.

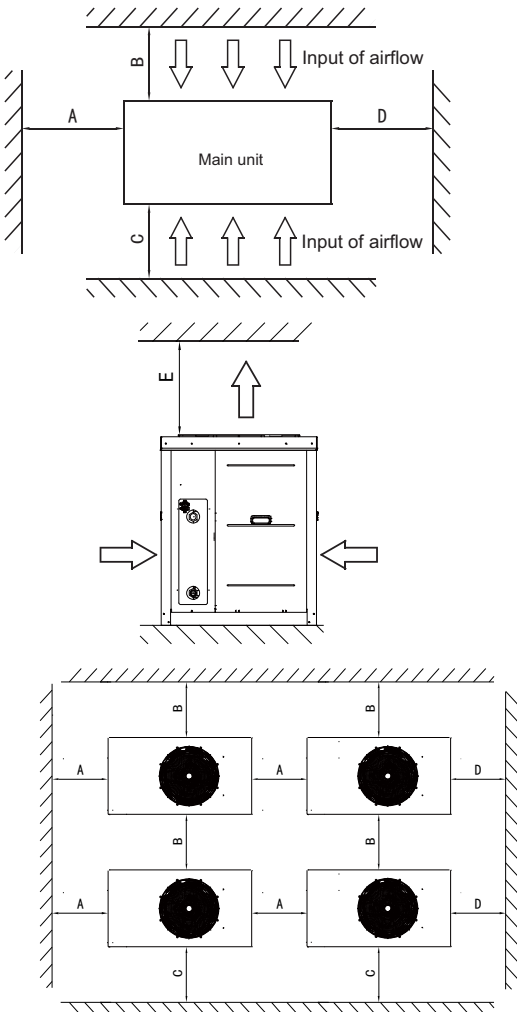


Fig. 3-3

Installation space (mm)	
A	≥800
B	≥2000
C	≥2000
D	≥800
E	≥6000

3.4 Space requirements for parallel installation of multiple Modular units

To avoid back flow of the air in the condenser and operational faults of the unit, the parallel installation of multiple Modular units can follow the direction A and D as shown in Fig. 3-2, the spaces between the unit and the obstacle are given in Table 3-1, and the space between adjacent Modular units should not be less than 300mm; the installation can also follow the direction B and C as shown in Fig. 3-2, the spaces between the unit and the obstacle are given in Table 3-1, and the space between adjacent Modular units should not be less than 600mm; the installation can also follow the direction combination of A and D, and B and C, the spaces between the unit and the obstacle are given in Table 3-1, the space between adjacent Modular units in the direction A and D should not be less than 300mm, and the space between adjacent Modular units in the direction B and C should not be less than 600mm. If the spaces mentioned above cannot be met, the air passing from the unit to the coils may be restricted, or back flow of air discharge may occur, and the performance of the unit may be affected, or the unit may fail to operate.

3.5 Installation foundation

- The unit should be located on the horizontal foundation, the ground floor or the roof which can bear operating weight of the unit and the weight of maintenance personnel. Refer to Table 9.1 (Table of applicable models and parameters) for operating weight.
- If the unit is located so high that it is inconvenient for maintenance personnel to conduct maintenance, the suitable scaffold can be provided around the unit.
- The scaffold must be able to bear the weight of maintenance personnel and maintenance facilities.
- The bottom frame of the unit is not allowed to be embedded into the concrete of installation foundation.

3.5.1 Location drawing of installation foundation of the unit: (unit: mm)

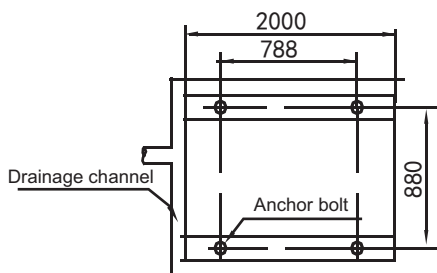


Fig. 3-4

Schematic diagram of installation dimension of 30kW module.

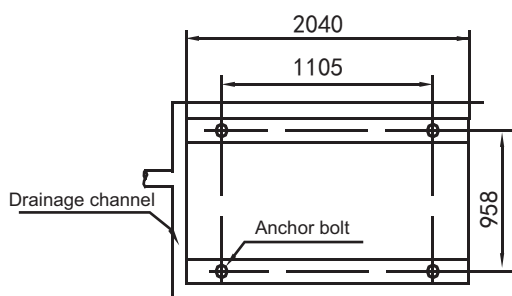


Fig. 3-5

Schematic diagram of installation dimension of 60kW module.

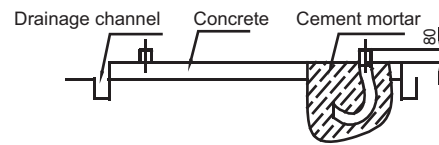


Fig. 3-6

3.6 Installation of damping devices

3.6.1 Damping devices must be provided between the unit and its foundation.

By means of the $\Phi 15\text{mm}$ diameter installation holes on the steel frame of the unit base, the unit can be fastened on the foundation through the spring damper. See Fig. 3-3 (Schematic diagram of installation dimension of the unit) for details about center distance of the installation holes. The damper does not go with the unit, and the user can select the damper according to the relevant requirements. When the unit is installed on the high roof or the area sensitive to vibration, please consult the relevant persons before selecting the damper.

3.6.2 Installation steps of the damper

- Step 1. Make sure that the flatness of the concrete foundation is within $\pm 3\text{mm}$, and then place the unit on the cushion block.
- Step 2. Raise the unit to the height suitable for installation of the damping device.
- c. Remove the clamp nuts of the damper.
- Step 3. Place the unit on the damper, and align the fixing bolt holes of the damper with the fixing holes on the unit base.
- Step 4. Return the clamp nuts of the damper to the fixing holes on the unit base, and tighten them into the damper.
- Step 5. Adjust the operational height of the damper base, and screw down the leveling bolts. Tighten the bolts by one circle to ensure equal height adjustment variance of the damper.
- Step 6. The lock bolts can be tightened after the correct operational height is reached.



NOTE

It is recommended that the damper should be fastened on the foundation with the provided holes. After the unit is placed on the foundation, the damper connected with the unit should not be moved, and the central clamp nut is not allowed to be tightened before the damper sustains load.

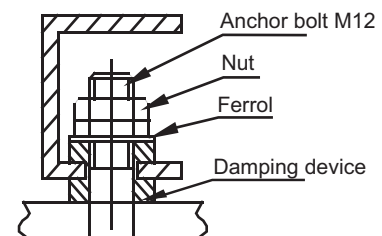


Fig. 3-7

4. WATER SYSTEM INSTALLATION

4.1 Basic requirements of connection of chilled water pipes



CAUTION

- After the unit is in place, chilled water pipes can be laid.
- The relevant installation regulations should be abided with when conducting connection of water pipes.
- The pipelines should be free of any impurity, and all chilled water pipes must conform to local rules and regulations of pipeline engineering.

- Connection requirements of chilled water pipes
 - a. All chilled water pipelines should be thoroughly flushed, to be free of any impurity, before the unit is operated. Any impurity should not be flushed to or into the heat exchanger.
 - b. Water must enter the heat exchanger through the inlet; otherwise the performance of the unit will decline.
 - c. The inlet pipe of the evaporator must be provided with a target flow controller, to realize flow-break protection for the unit. Both ends of the target flow controller must be supplied with horizontal straight pipe sections whose diameter is 5 times that of the inlet pipe. The target flow controller must be installed in strict accordance with "Installation & Regulation Guide for Target Flow Controller" (Figure 4.3~4.4). The wires of the target flow controller should be led to the electric cabinet through shielded cable (see Electric Controlling Schematic Diagram for details). The working pressure of the target flow controller is 1.0MPa, and its interface is 1 inch in diameter. After the pipelines are installed, the target flow controller will be set properly according to the rated water flow of the unit.
 - d. The pump installed in the water pipeline system should be equipped with starter. The pump will directly press water into the heat exchanger of the water system.
 - e. The pipes and their ports must be independently supported but should not be supported on the unit.
 - f. The pipes and their ports of the heat exchanger should be easy to disassemble for operation and cleaning, as well as inspection of port pipes of the evaporator.
 - g. The evaporator should be provided with a filter with more than 40 meshes per inch at site. The filter should be installed near to the inlet port as much as possible, and be under heat preservation.
 - h. The by-pass pipes and by-pass valves as shown in Fig. 4-1 must be mounted for the heat exchanger, to facilitate cleaning of the outside system of water passage before the unit is adjusted. During maintenance, the water passage of the heat exchanger can be cut off without disturbing other heat exchangers.
 - i. The flexible ports should be adopted between the interface of the heat exchanger and on-site pipeline, to reduce transfer of vibration to the building.
 - j. To facilitate maintenance, the inlet and outlet pipes should be provided with thermometer or manometer. The unit is not equipped with pressure and temperature instruments, so they need to be purchased by the user.

k. All low positions of the water system should be provided with drainage ports, to drain water in the evaporator and the system completely; and all high positions should be supplied with discharge valves, to facilitate expelling air from the pipeline. The discharge valves and drainage ports should not be under heat preservation, to facilitate maintenance.

l. All possible water pipes in the system to be chilled should be under heat preservation, including inlet pipes and flanges of the heat exchanger.

m. The outdoor chilled water pipelines should be wrapped with an auxiliary heating belt for heat preservation, and the material of the auxiliary heat belt should be PE, EDPM, etc., with thickness of 20mm, to prevent the pipelines from freezing and thus cracking under low temperature. The power supply of the heating belt should be equipped with an independent fuse.

n. When the ambient temperature is lower than 2℃, and the unit will be not used for a long time, water inside the unit should be drained. If the unit is not drained in winter, its power supply should not be cut off, and the fan coils in the water system must be provided with three-way valves, to ensure smooth circulation of the water system when the anti-freezing pump is started up in winter.

o. The common outlet pipelines of combined units should be provided with mixing water temperature sensor.

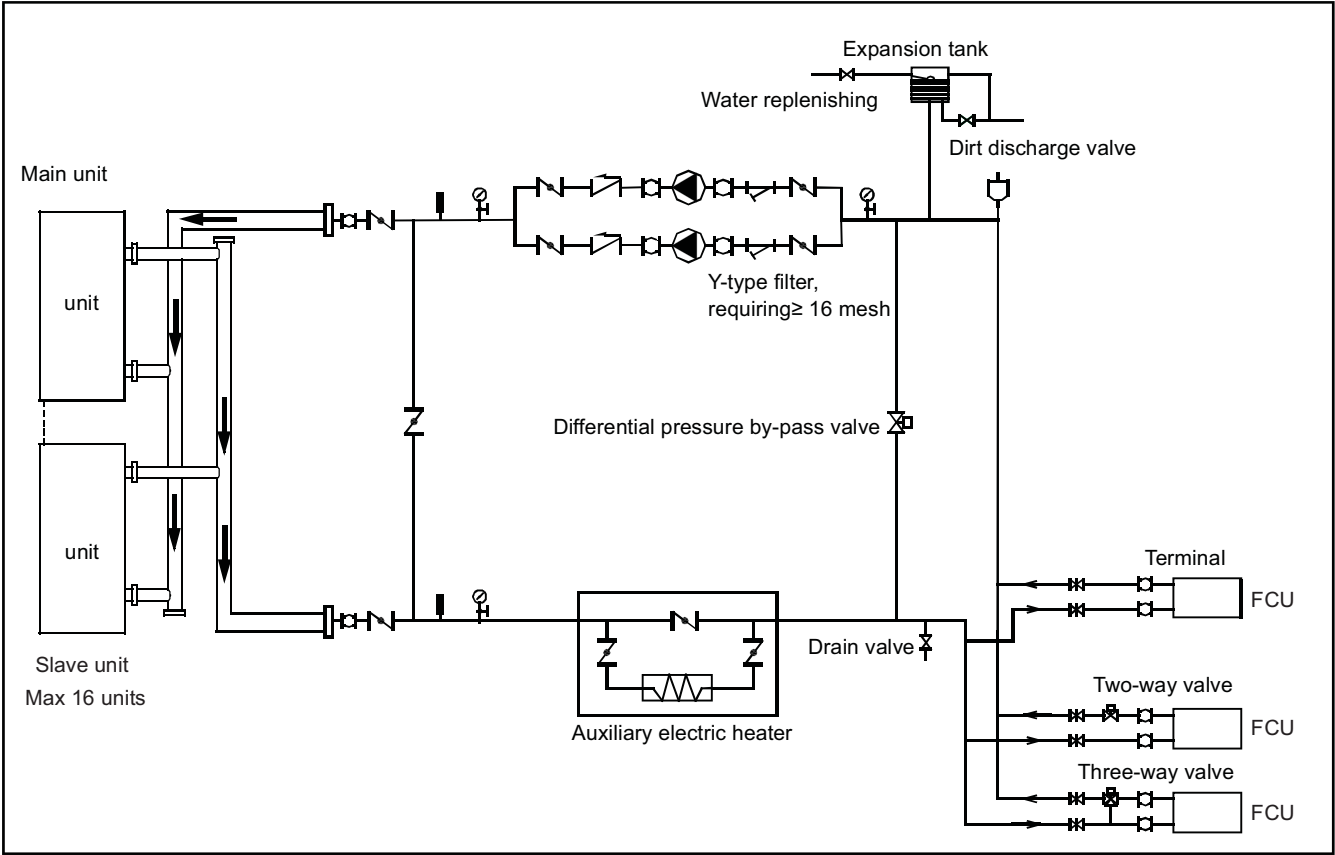


WARNING

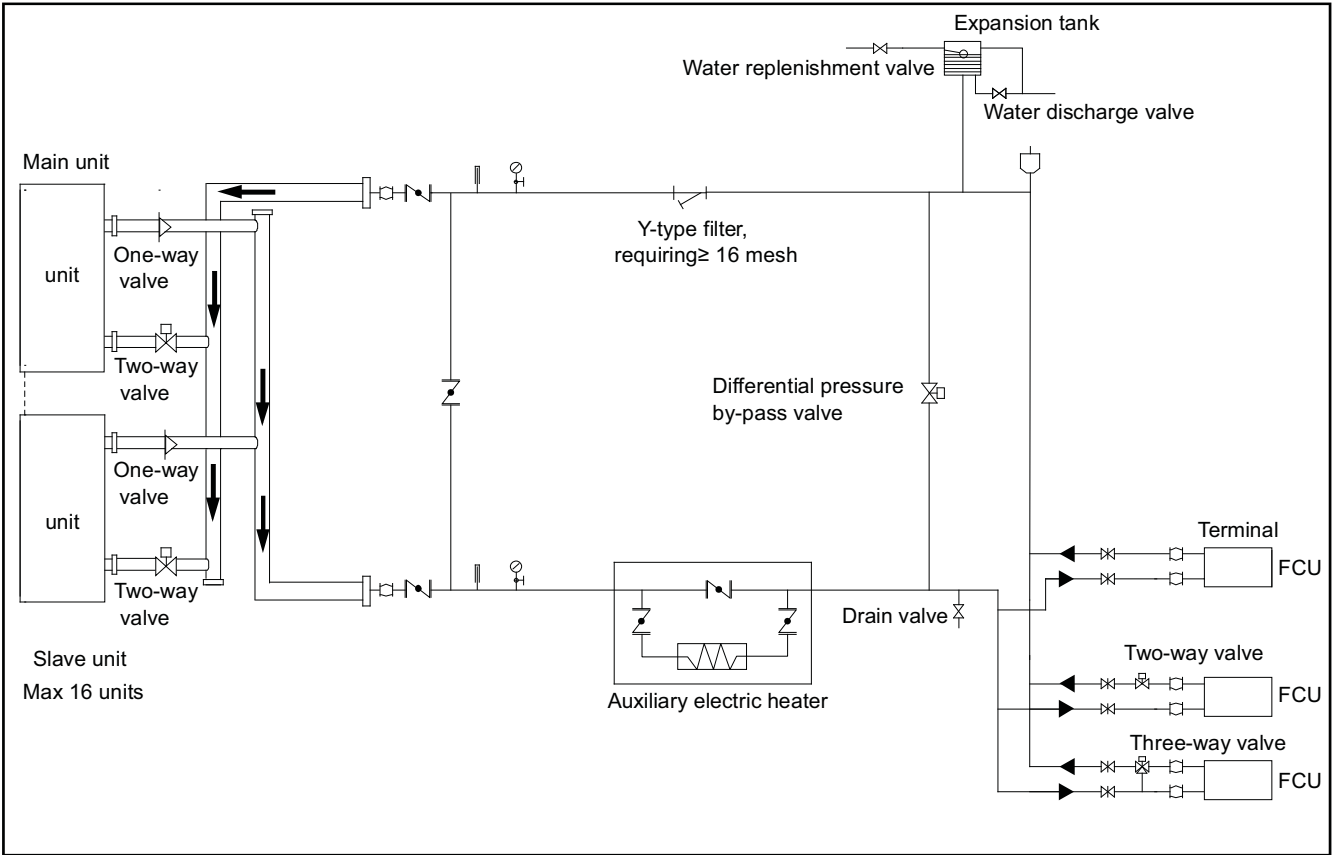
- For the water pipeline network including filters and heat exchangers, dreg or dirt may seriously damages the heat exchangers and water pipes.
- The installation persons or the users must ensure the quality of chilled water, and de-icing salt mixtures and air should be excluded from the water system, since they may oxidize and corrode steel parts inside the heat exchanger.

4.2 Connection drawing of pipeline system

This is the water system of unit without the hidraulic module (MUENR-H7T)



This is the water system of unit with the hidraulic module (MUENR-H7T(K); MUENR-H7T(K2))



Symbol explanation				
Stop valve	Pressure gauge	Flexible joint	Gate valve	Automatic discharge valve
Y-shaped filter	Thermometer	Circulating pump	Check valve	

Fig. 4-1

4.3 Design of the tank in the system

■ kW is the unit for cooling capacity and L is the unit for G water flow in the formula counting the minimum water flow.
Comfortable type air conditioner
 $G = \text{cooling capacity} \times 2.6L$

Process type type cooling
 $G = \text{cooling capacity} \times 7.4L$

■ In certain occasion (especially in manufacture cooling process), for conforming the system water content requirement, it's necessary to mount a tank equipping with a cut-off baffle at the system to avoid water short-circuit, Please see the following schemes:

4.4 Minimum chilled water flow

The minimum chilled water flow is shown in the table 4-1

If the system flow is less than the minimum unit flow rate, the evaporator flow can be recirculated, as shown in the diagram.

For minimum chilled water flow rate

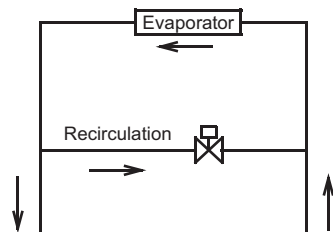


Fig. 4-2

4.5 Maximum chilled water flow

The maximum chilled water flow is limited by the permitted pressure drop in the evaporator. It is provided in the table 4-1

If the system flow is more than the maximum unit flow rate, bypass the evaporator as shown in the diagram to obtain a lower evaporator flow rate.

For maximum chilled water flow rate

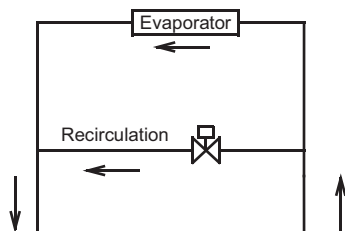


Fig. 4-3

4.6 Minimum and Maximum water flow rates

Table 4-1

Model \ Item	Waterflow rate(m³/h)	
	Minimum	Maximum
30	3.8	6.4
60	8.0	13.0

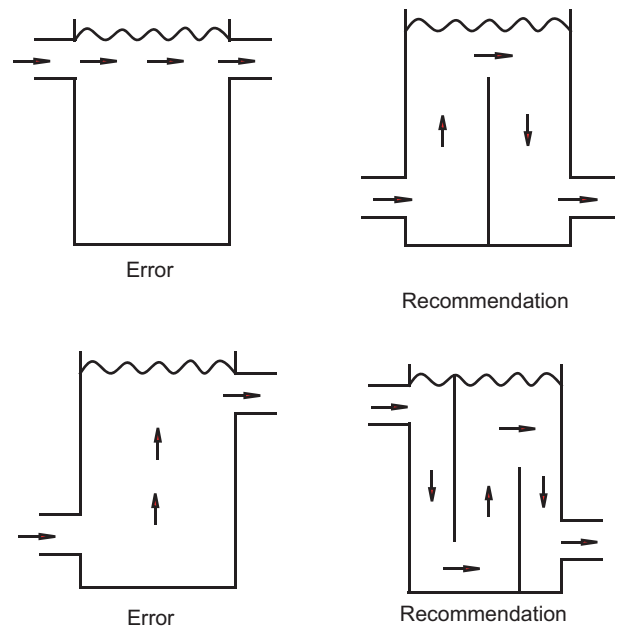


Fig.4-4

4.7 Selection and installation of the pump

4.7.1 Select the pump

a. Select the water-flow of the pump

The rated water-flow must no less than the unit rated water-flow; in terms of multi-connect the units, that water-flow must no less than total units' rated water-flow.

b. Select the lift of the pump.

$$H = h_1 + h_2 + h_3 + h_4$$

H: The lift of the pump.

h1: Main unit water resistance.

h2: Pump water resistance.

h3: Water resistance of the longest water-loop distance, includes: pipe resistance, different valve's resistance, flexible pipe resistance, pipe elbow and three-way resistance, two-way resistance or three-way resistance, as well as filter resistance.

H4: the longest terminal resistance.

4.7.2 Installation the pump

a. The pump should be installed at the water inlet pipe, both of which sides must mount the soft connectors for vibration-proof.

b. The backup pump for the system (recommended).

c. Units must with a main unit controls (Please see Fig. 5-3 for the controls wiring diagram).

4.8 Water quality control

4.8.1 Water quality control

When industrial water is used as chilled water, little furring may occur; however, well water or river water, used as chilled water, may cause much sediment, such as furring, sand, and so on. Therefore, well water or river water must be filtered and softened in softening water equipment before flowing into chilled water system. If sand and clay settle in the evaporator, circulation of chilled water may be blocked, and thus leading to freezing accidents; if hardness of chilled water is too high, furring may occur easily, and the devices may be corroded. Therefore, the quality of chilled water should be analyzed before being used, such as PH value, conductivity, concentration of chloride ion, concentration of sulfide ion, and so on.

4.8.2 Applicable standard of water quality for the unit

Table 4-2

PH value	7~8.5
Total hardness	<50ppm
Conductivity	<200 μ V/cm (25°C)
Sulfide ion	No
Chloride ion	<50ppm
Ammonia ion	No
Sulfate ion	<50ppm
Silicon	<30ppm
Iron content	<0.3ppm
Sodium ion	No requirement
Calcium ion	<50ppm

4.9 Installation & regulation guide for target flow controller

4.9.1 Please carefully check flow switches before conducting installation of the target flow controller. Packing should be in good condition, and the appearance should be free of damage and deformation. If any problem, please contact the manufacturer.

4.9.2 Flow switches can be installed in the horizontal pipeline or the vertical pipeline with upward flowing direction but cannot be mounted in the pipeline with downward flowing direction. The inlet water of gravity should be taken into account when flow switches are installed in the pipeline with upward flowing direction.

4.9.3 Target flow controller must be installed on a section of straight-line pipeline, and its both ends must be supplied with straight-line pipes whose length is at least 5 times diameter of the pipe. In the meanwhile, the fluid flowing direction in the pipeline must be consistent with the direction of arrow on the controller. The connection terminal should be located where wiring connection can be easily done.

4.9.4 Pay attention to the following items when conducting installation and wire connection:

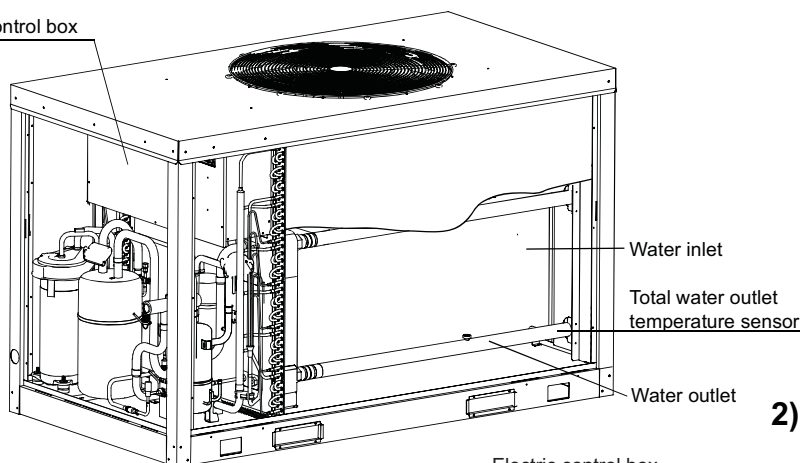
- Collision of the wrench with the soleplate of the flow switch is prohibited, since such collision may cause deformation and failure of the flow switch.
- To avoid electric shock and damages to the devices, the power supply should be cut off, when wires are connected or adjustment is done.
- When wiring connection is conducted, adjustment of other screws except connection terminals of micro switches and ground screws is prohibited. In the meanwhile, over great force should not be applied when wires of micro switches are connected, otherwise micro switches may suffer displacement, thus leading to failure of flow switches.
- Special grounding screws should be used for earth connection. Bolts should not be installed or removed at will; otherwise flow switches may suffer deformation and failure.
- Flow switches have been set at minimal flow value prior to ex-factory. They should not be adjusted below the ex-factory setting value, or they may suffer failure. After installing flow switches, please press the flow switch lever several times to check them. When the lever is found not to respond with "clatter", rotate the screw in a clockwise direction, until "clatter" occurs.
- Be sure to determine the model of target slice according to the rated flow of the unit, the diameter of the outlet pipe and the adjustment range of the target slice of the flow switch. Besides, the target slice should not contact with other restrictors in the pipeline or on the inner wall of the pipeline, or the flow switch cannot be reset normally.

4.9.5 Determine whether the flow switch and the system connected with it are in good operation according to the measured value by flow meter, namely, when the measured value on flow meter is less than 60% of rated water flow of the unit, the target flow controller should be cut off and observed for 3 working periods, and it should be covered with flow switch shell timely.

4.10 Installation of single-module water system pipeline

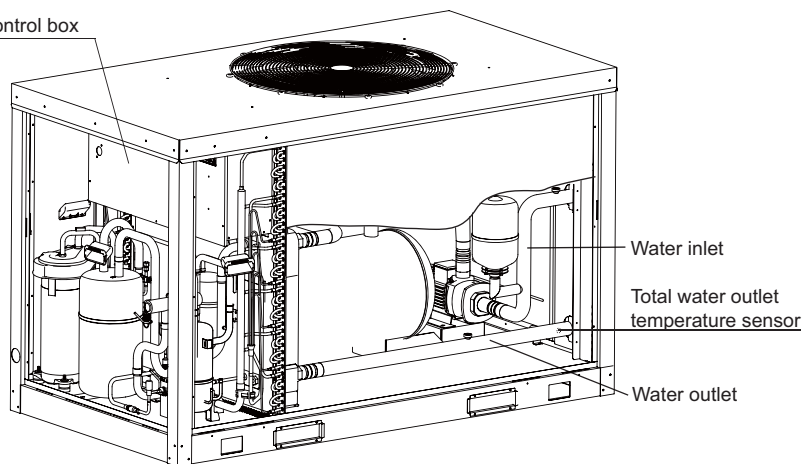
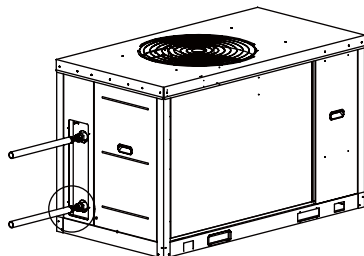
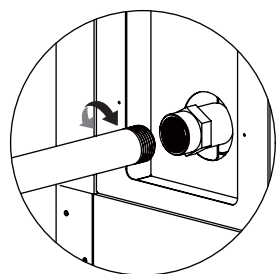
1) MUENR-30-H7T

Electric control box



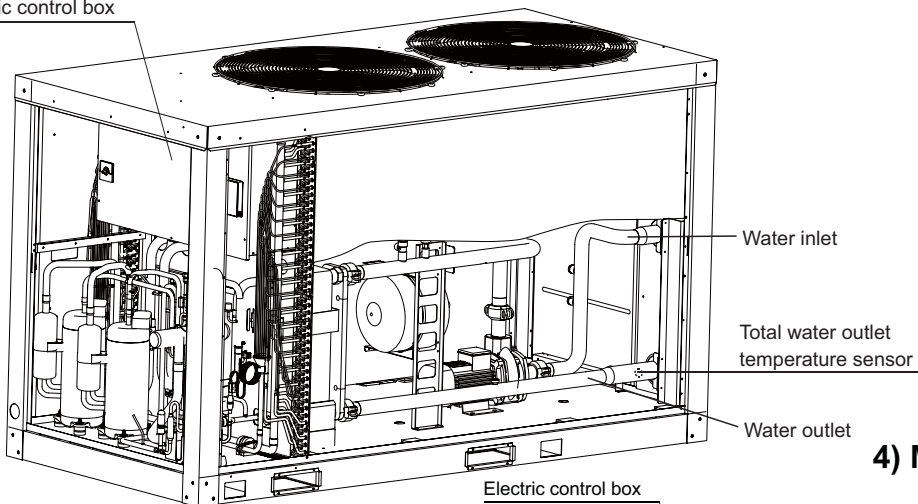
2) MUENR-30-H7T(K); MUENR-30-H7T(K2)

Electric control box



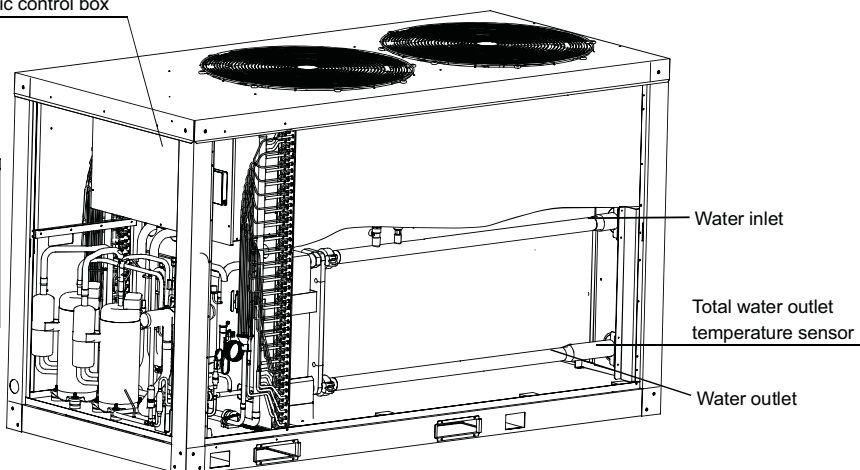
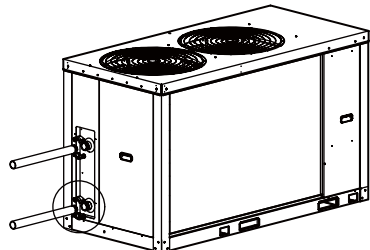
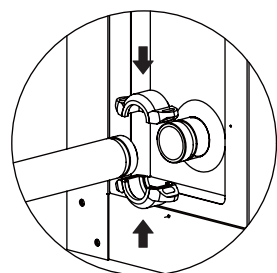
3) MUENR-60-H7T

Electric control box



4) MUENR-60-H7T(K)

Electric control box



Note: The pictures are only for your reference.

4.11 Installation of multi-module water system pipeline

Multi-module combination installation involves special design of the unit, so relevant explanation is given as follows.

4.11.1 Installation mode of multi-module combination water system pipeline

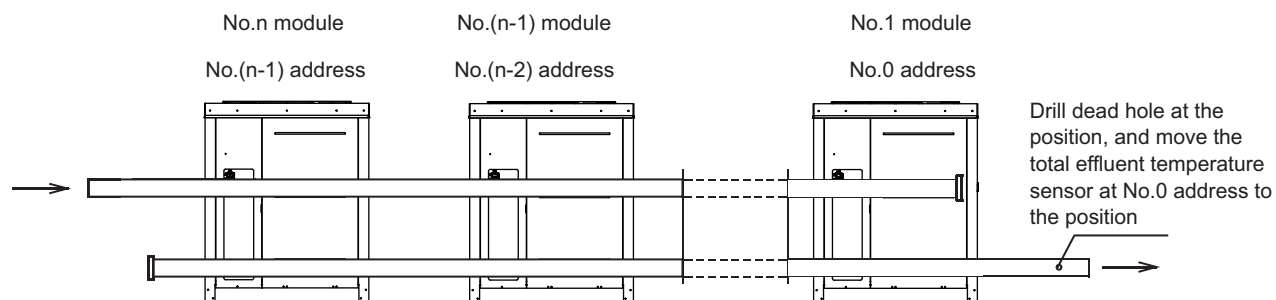


Fig.4-7 (installation mode A: less than 16 modules)

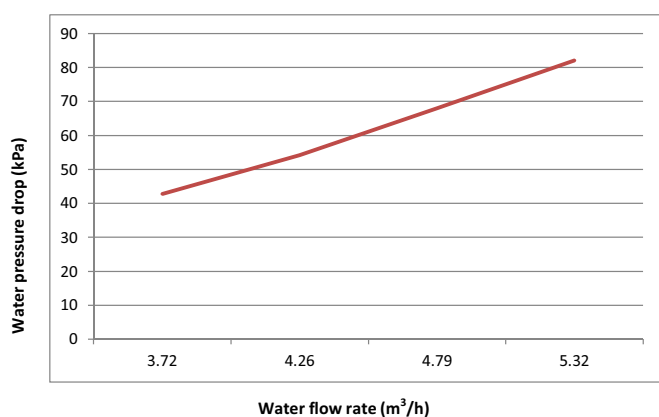
4.11.2 Table of diameter parameters of main inlet and outlet pipes

Table 4-3

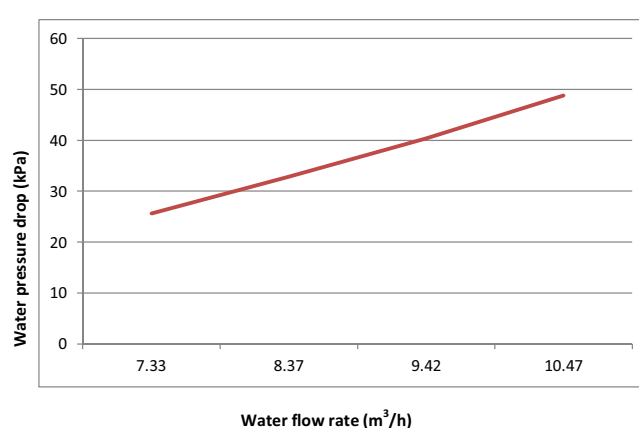
Cooling capacity (kW)	Total inlet and outlet water pipe inside nominal diameter
$15 \leq Q \leq 30$	DN40
$30 < Q \leq 90$	DN50
$90 < Q \leq 130$	DN65
$130 < Q \leq 210$	DN80
$210 < Q \leq 325$	DN100
$325 < Q \leq 510$	DN125
$510 < Q \leq 740$	DN150
$740 < Q \leq 1300$	DN200
$1300 < Q \leq 2080$	DN250

4.11.3 Hydronic performance

30kW module



60kW module



CAUTION

Please pay attention to the following items when installing multiple modules:

- Each module corresponds to an address code which cannot be repeated.
- Main water outlet temperature sensing bulb, target flow controller and auxiliary electric heater are under control of the main module.
- One wired controller and one target flow controller are required and connected on the main module.
- The unit can be started up through the wired controller only after all addresses are set and the aforementioned items are determined. The wired controller is $\leq 500\text{m}$ away from the outdoor unit.

5. ELECTRIC WIRING

5.1 Electric wiring



CAUTION

1. The air-conditioner should apply special power supply, whose voltage should conform to rated voltage.
2. Wiring construction must be conducted by the professional technicians according to the labeling on the circuit diagram.
3. The power wire and the grounding wire must be connected the suitable terminals.
4. The power wire and the grounding wire must be fasten up by suitable tools.
5. The terminals connected the power wire and the grounding wire must be fully fastened and regularly checked, in case to become flexible.
6. Only use the electric components specified by our company, and require installation and technical services from the manufacturer or authorized dealer. If wiring connection fails to conform to electric installation norm, failure of the controller, electronic shock, and so on may be caused.
7. The connected fixed wires must be equipped with full switching-off devices with at least 3mm contact separation.
8. Set leakage protective devices according to the requirements of national technical standard about electric equipment.
9. After completing all wiring construction, conduct careful check before connecting the power supply.
10. Please carefully read the labels on the electric cabinet.
11. The user's attempt to repair the controller is prohibited, since improper repair may cause electric shock, damages to the controller, and so on. If the user has any requirement of repair, please contact the maintenance center.
12. The power cord type designation is H07RN-F.

5.2 Power supply specification

Table 5-1

Model	Item	Outdoor power supply			
		Power supply	Manual switch	Fuse	Wiring
30		380-415V 3N~50Hz	50A	36A	10mm ² (<20m)
60		380-415V 3N~50Hz	100A	70A	25mm ² (<20m)

5.3 Requirements of wiring connection

5.3.1 No additional control components are required in the electric cabinet (such as relay, and so on), and the power supply and control wires not connected with the electric cabinet are not allowed to go through the electric box. Otherwise, electromagnetic interference may cause failure of the unit and control components and even damages to them, which thus lead to protective failure.

5.3.2 All cables led to the electric box should be supported independently but by the electric box.

5.3.3 The strong current wires generally pass the electric box, and 220-230V alternating current may also pass the control board, so wiring connection should conform to the principle of separation of strong current and weak current, and the wires of power supply should be kept more than 100 mm away from the control wires.

5.3.4 Only use 380-415V 3N~50Hz rated power supply for the unit, and the maximum allowable range of voltage is 342V~440V.

5.3.5 All electric wires must conform to local wiring connection norm. The suitable cables should be connected to power supply terminal through wiring connection holes at the bottom of the electric cabinet. According to Chinese standard, the user is responsible for providing voltage and current protection for the input power supply of the unit.

5.3.6 All power supplies connected to the unit must pass one manual switch, to ensure that the voltages on all nodes of electric circuit of the unit are released when the switch is cut off.

5.3.7 The cables of correct specification must be used to supply power for the unit. The unit should use independent power supply, and the unit is not allowed to use the same power supply together with other electric devices, to avoid over-load danger. The fuse or manual switch of the power supply should be compatible with working voltage and current of the unit. In case of parallel connection of multiple modules, the requirements of wiring connection mode and configuration parameters for the unit are shown in the following figure.

5.3.8 Some connection ports in the electric box are switch signals, for which the user needs to provide power, and the rated voltage of the power should be 220-230VAC. The user must be aware that all power supplies they provided should be obtained through power circuit breakers (provided by the user), to ensure that all voltages on the nodes of the provided power supply circuit are released when the circuit breakers are cut off.

5.3.9 All inductive components provided by the user (such as coils of contactor, relay, and so on) must be suppressed with standard resistance-capacitance suppressors, to avoid electromagnetic interference, thus leading to failure of the unit and its controller and even damages to them.

5.3.10 All weak current wires led to the electric box must apply shielded wires, which must be provided with grounding wires. The shield wires and power supply wires should be laid separately, to avoid electromagnetic interference.

5.3.11 The unit must be provided with grounding wires, which are not allowed to be connected with the grounding wires of gas fuel pipelines, water pipelines, lightning conductors or telephones. Improper earth connection may cause electric shock, so please check whether earth connection of the unit is firm or not frequently.

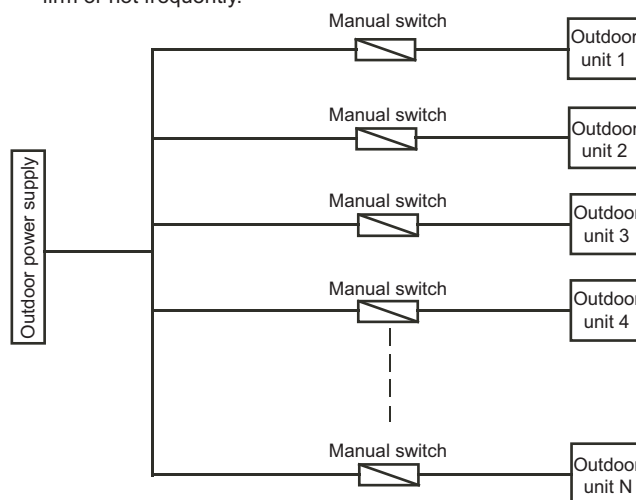


Fig. 5-1



NOTE

Only 16 Modular units can be combined at most.

5.4 Wiring steps

Step 1. Check the unit and ensure that it is connected with grounding wires correctly, to avoid leakage, and the grounding devices should be mounted in strict accordance with the requirements of electrical engineering rules. The grounding wires can prevent electric shock.

Step 2. The control box of the main power switch must be mounted in a proper position.

Step 3. Wiring connection holes of the main power should be provided with glue cushion.

Step 4. The main power and neutral wires and grounding wires of power supply are led into the electric box of the unit.

Step 5. The wires of the main power must pass the bonding clamp.

Step 6. Wires should be connected firmly to the connection terminals A, B, C and N.

Step 7. Phase sequences must be consistent when the wires of the main power.

Step 8. The main power should be located out of easy reach of non-professional maintenance personnel, to avoid mal-operation and improve safety.

Step 9. Connection of control wires of auxiliary electric heaters: the control wires of AC contactor of the auxiliary electric heater must pass the connection terminals CN19_L and CN19_N of the main unit, as shown in Fig. 5-2.

Step 10. Connection of control wires of pump: the control wires of AC contactor of pump must pass the connection terminals CN1 or CN2 of the main unit, as shown in Fig. 5-3.

Step 11. The connection way of the wire controller connects with every signal wires from package units: signal wires P, Q, E are connected in the same way of main wires connection method and accordingly connect to the terminals P, Q, E in the wire controller.

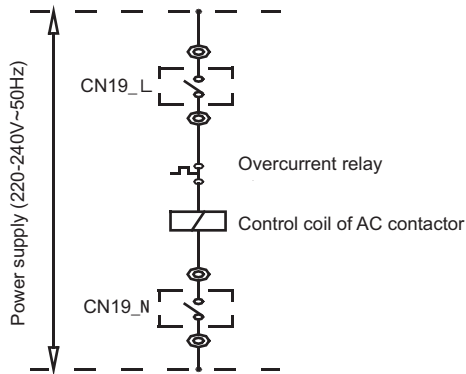


Fig. 5-2

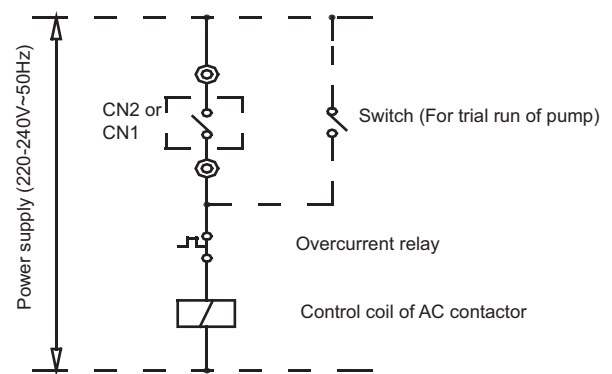


Fig. 5-3



CAUTION

An all-pole disconnection device which has at least 3mm separation distance in all pole and a residual current device(RCD)with the rating of above 10 mA shall be incorporated in the fixed wiring according to the national rule.
The appliance shall be installed in accordance with national wiring regulations.

5.5 Electric control schematic diagram of the unit

5.5.1 Schematic diagram of connection and communication of the main unit and subordinate units (see Attached Picture)

5.5.2 Indicating diagram of electric control of main control board (see Fig. 5-4)

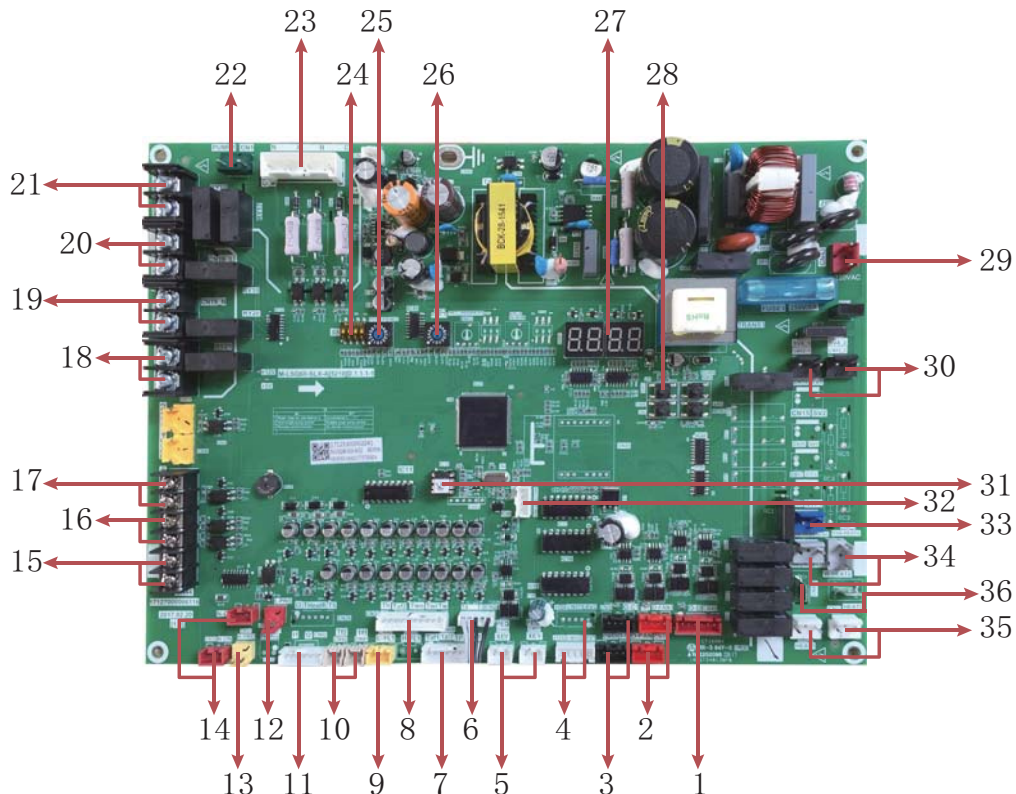


Fig. 5-4

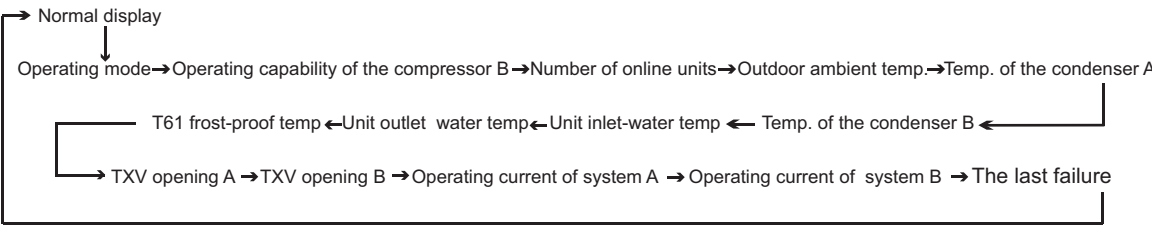
The picture is for reference only, refer to the actual board.

5.6 Detail description for parts in fig. 5-4

Table 5-2

No.	Detail information
1	Reserved port
2	Outdoor fan, controlled by T4
3	One compressor of the system
4	Electronic expansion valve of the system
5	Signal communication port (fault code E2)
6	<p>T4: Outdoor ambient temperature sensor (fault code E7)</p> <p>T3: Pipe temperature sensor of the condenser (fault code E5 and protection code P7)</p> <p>1)T4: If there is one system that requires starting outdoor fans, the fans are started through electric control of the unit. Start outdoor fan A only, start A and B gears, and control the unit through T4.</p> <p>2)T3: when the electric control of the Modular unit detects the temperature of the outdoor pipe T3 of the system exceeds the protective temperature 65℃ the corresponding system will be shut down. And it will be re-started up, after the temperature drops below the recovery temperature 60℃. Another system will be not affected.</p> <p>3)T4, T3: when the temperature sensor is detected to suffer open circuit or short circuit, fault alarm will occur. When the main unit suffer fault of temperature sensor: the main unit and subordinate units will be shut down. When the subordinate unit suffer fault of temperature sensor: the unit will be shut down, but other subordinate units will not be affected.</p>
7	<p>Taf1: Shell and tube low-temperature ant-freeze sensor1 (fault code 1 Eb)</p> <p>TZ/7: Total cooling temperature test port</p> <p>TP2:Compressor exhaust temperature detecting port of the systemB</p> <p>TP1:Compressor exhaust temperature detecting port of the systemA</p>
8	<p>Th: Compressor back gas temperature detecting port</p> <p>Taf2: Shell and tube low-temperature ant-freeze sensor 2 (fault code 2 Eb)</p> <p>Two: Unit outlet water temperature sensor (fault code E4)</p> <p>Under refrigeration mode and heating mode, conduct adjustment according to the magnitude of unit outlet water temperature.</p> <p>Adjustment range of constant speed capability: ON and OFF.</p> <p>Tw: Inlet water temperature sensor (fault code EF)</p> <p>Tw: Total outlet water temperature sensor (fault code E3)</p> <p>Only the main unit is valid, and the subordinate units are invalid.</p> <p>Under refrigerating mode and heating mode, conduct adjustment according to the magnitude of total outlet water temperature. Adjustment range: Load, stabilize, unload, Emergency Stop.</p>
9	Low pressure sensor
10	<p>Module temperature test port</p> <p>Module temperature is higher than 82℃ when shutdown protection PL</p>
11	<p>I1: Detection of current of the compressor A (protection code P4)</p> <p>I2: Detection of current of the compressor B (protection code P5)</p>
12	Low voltage protection switch
13	High-pressure protection and discharge temperature switch protection (protection code P0)

No.	Detail information
14	CN58/CN59: Filter board power supply port
15	CN46: Remote control port for mode selection. If the port is closed, it is the heating mode; if the port is disconnected, it is the cooling mode
16	CN45: Remote control port (ON/OFF signal, effect on NO.0 unit (Master unit))
17	CN44: Water flow detection (fault code of the main unit E9) is only valid for the main unit but invalid for subordinate units. 1) Main unit: if abnormal water flow occurs , the main unit board and the wired controller will display fault code E9. 2) Subordinate unit: (water flow detection will not be done).
18	CN21: The alarm signal output of the unit (ON/OFF signal)
19/20	CN19: Auxiliary electric heater Attention: the control port value of auxiliary electric heater actually detected is ON/OFF but not 220-230V control power supply, so special attention should be paid when installing the auxiliary electric heater. Attention! Under heating mode, when the main unit board detects total water outlet temperature to be lower than 45℃ , the switch will be closed, and the auxiliary electric heater will begin to work; when the total water outlet temperature is higher than 50℃ , the switch will be opened, and the auxiliary electric heater will stop working.
21	CN2: Reserved (without function)
22	CN1: PUMP1 Attention: the control port value of the pump actually detected is ON/OFF but not 220-230V control power supply , so special attention should be paid when installing the pump. 1) After receiving start-up instruction, the pump will be started up instantly, and will maintain start-up state always in the process of operation. 2) In case of refrigerating or heating shutdown, the pump will be shut down 2 minutes after all modules stop operating. 3) In case of shutdown under the pump mode, the pump can be directly shut down.
23	CN30: Input of three-phase four-wire power supply (fault code E1) Three phases A, B and C of power supply should exist simultaneously, and the difference of phase angle should be 120° among them. If the conditions are not met, fault of phase sequence or phase lack may occur, and fault code will be displayed. When the power supply returns to normal condition, fault is removed. Attention: phase lack and phase dislocation of power supply are detected only in the early period after the power supply is connected, and they are not detected while the unit is in operation.
24	S5: 1)The cooling water temperature of the conventional cooling water/ cooling water temperature selection (dial code S5-1) host is valid,and the master slave machine needs a unified code. 2)Remote control function selection(dial code S5-4) host effective: ON means with remote ON/OFF and mode function. 3)Pump control units selection(dial code S5-3): ON means One small pump per unit, OFF means One large pump controlled by master unit
25	ENC2: Outdoor unit capacity code
26	ENC1: When the address is 0, it serves as the main unit (Master) When the address is 1,2,3.....F, it serves as the subordinate (Slave) unit 1,2,3.....15. Each Modular part of Modular unit has the same electric control function, and the main unit and subordinate units can be set through address code on the electric control board. The address code 0 #is provided as the main unit. Only the unit is chosen as the main unit, its electric control can activate such functions as direct communication with the wired controller, refrigerating and heating capability adjustment, pump control, auxiliary heater control, total effluent temperature detection and water flowswitch detection.

No.	Detail information
27	Numerical code tube 1) In case of stand-by, the address of the module is displayed; 2) In case of normal operation, 10. is displayed (10 is followed by dot). 3) In case of fault or protection, fault code or protection code is displayed.
28	<p>Spot check. The operating status of outdoor system can be observed through spot check, and specific display contents are as shown in the following figure:</p>  <pre> graph TD ND[Normal display] --> OM[Operating mode] OM --> OC[Operating capability of the compressor B] OC --> NU[Number of online units] NU --> OA[Outdoor ambient temp.] OA --> CA[Temp. of the condenser A] CA --> CB[Temp. of the condenser B] CB --> UI[Unit inlet-water temp] UI --> UO[Unit outlet water temp] UO --> T61[T61 frost-proof temp] T61 --> TXVA[TXV opening A] TXVA --> TXVB[TXV opening B] TXVB --> OCA[Operating current of system A] OCA --> OCB[Operating current of system B] OCB --> LF[The last failure] </pre> <ul style="list-style-type: none"> • Display contents of "operating mode": 1. cooling; 2. heating; 4. pump; 8. Stand-by • Display contents of "number of online units": the main unit can display the number of online units, and the subordinate unit displays 0.
29	Input of 220-230V AC
30	Quick return oil solenoid valve
31	Parameter chip
32	Program burn in prot
33	Four-way valve of the system B
34	Plate heat exchange antifreeze and tropical
35	Compressor electromechanical heating belt
36	Target flow switch electric heating belt control port



CAUTION

1. Faults

When the main unit suffers faults, the main unit stops operating, and all other units also stop running;

When the subordinate unit suffers faults, only the unit stops operating, and other units are not affected.

2. Protection

When the main unit is under protection, only the unit stops operating, and other units keep running;

When the subordinate unit is under protection, only the unit stops operating, and other units are not affected.

6. TRIAL RUN

6.1 Points for attention prior to trial run

6.1.1 After the water system pipeline is flushed several times, please make sure that the purity of water meets the requirements; the system is re-filled with water and drained, and the pump is started up, then make sure that water flow and the pressure at the outlet meet the requirements.

6.1.2 The unit is connected to the main power 12 hours before being started up, to supply power to the heating belt and pre-heat the compressor. Inadequate pre-heating may cause damages to the compressor.

6.1.3 Setting of the wired controller. See details of the manual concerning setting contents of the controller, including such basic settings as refrigerating and heating mode, manual adjustment and automatic adjustment mode and pump mode. Under normal circumstances, the parameters are set around standard operating conditions for trial run, and extreme working conditions should be prevented as much as possible.

6.1.4 Carefully adjust the target flow controller on the water system or the inlet stop valve of the unit, to make the water flow of the system be 90% of the water flow specified in Table 7-1.

6.2 Check item table after installation

Table 6-1

Checking item	Description	Yes	No
Whether installing site is meet for requirements	Units are fixed mounting on level base.		
	Ventilating space for heat exchanger at the air side is meeting for requirement		
	Maintenance space is meeting for requirement.		
	Noise and vibration is meeting for requirement.		
	Sun radiation and rain or snow proof measures are meeting for requirements.		
	External physical is meeting for requirement.		
Whether water system is meeting for requirements	Pipe diameter is meeting for requirement		
	The length of system is meeting for requirement		
	Water discharge is meeting for requirement		
	Water quality control is meeting for requirement		
	Flexible tube's interface is meeting for requirement		
	Pressure control is meeting for requirement		
	Thermal insulation is meeting for requirement		
	Wire capacity is meeting for requirement		
	Switch capacity is meeting for requirement		
	Fuse capacity is meeting for requirement		
	Voltage and frequency are meeting for requirement		
Whether electric wiring system is meeting for requirements	Connecting tightly between wires		
	Operation control device is meeting for requirement		
	Safety device is meeting for requirement		
	Chained control is meeting for requirement		
	Phase sequence of power supply is meeting for requirement		

6.3 Trial run

6.3.1 Start up the controller and check whether the unit displays a fault code. If a fault occurs, remove the fault first, and start the unit according to the operating method in the "unit control instruction", after determining that there is no fault existing in the unit.

6.3.2 Conduct trial run for 30 min. When the influent and effluent temperature becomes stabilized, adjust the water flow to nominal value, to ensure normal operation of the unit.

6.3.3 After the unit is shut down, it should be put into operation 10 min later, to avoid frequent start-up of the unit. In the end, check whether the unit meets the requirements according to the contents in Table 9.1.

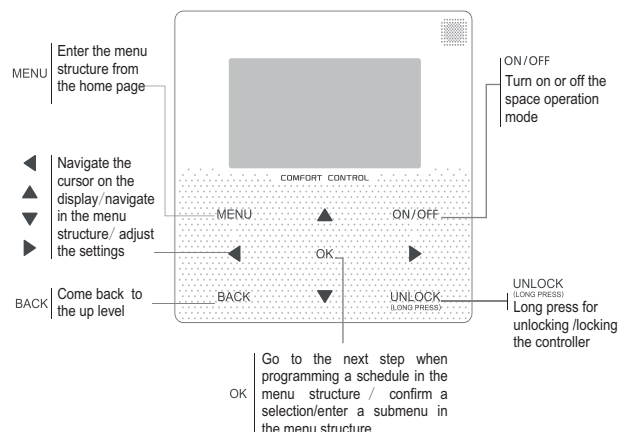


CAUTION

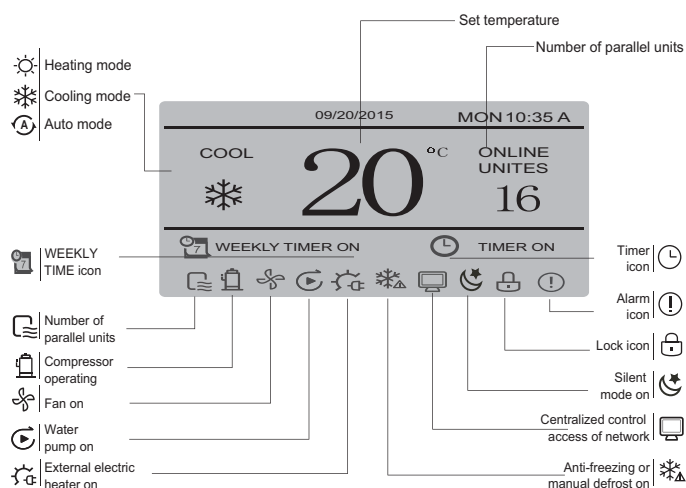
- The unit can control start-up and shut-down of the unit, so when the water system is flushed, the operation of the pump should not be controlled by the unit.
- Do not start up the unit before draining the water system completely.
- The target flow controller must be installed correctly. The wires of the target flow controller must be connected according to electric control schematic diagram, or the faults caused by water breaking while the unit is in operation should be the user's responsibility.
- Do not re-start the unit within 10 min after the unit is shut down during trial run.
- When the unit is used frequently, do not cut off the power supply after the unit is shut down; otherwise the compressor cannot be heated, thus leading to its damages.
- If the unit is not in service for a long time, and the power supply needs to be cut off, the unit should be connected to the power supply 12 hours prior to re-starting of the unit, to pre-heat the compressor, the pump, the plate heat exchanger and the differential pressure value.

7. USE

7.1 Use conditions of the unit



7.2 Overview of Wired Controller



7.3 ON/OFF

When the wired controller is unlocked and the unit is on, "ON/OFF" can be pressed to power off the unit under the home page only; when the unit is off, press "ON/OFF" to power on the unit. The mode can be switched under the power-off mode only.

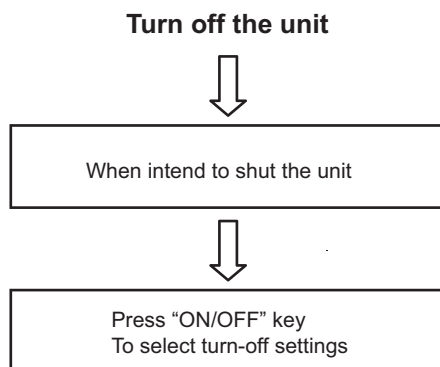
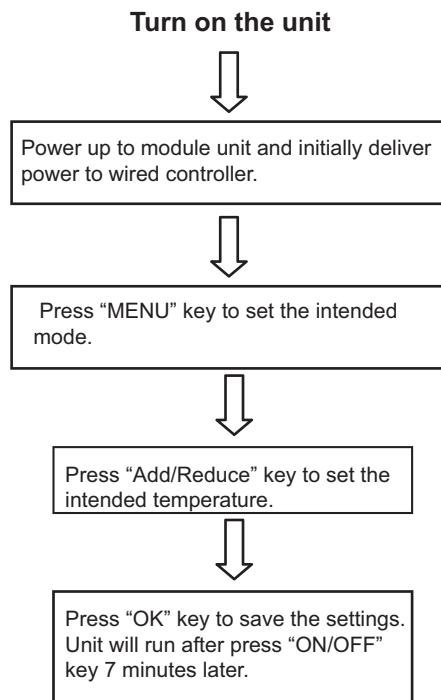


Fig.7-2

7.4 Control and protection function of unit

7.4.1 The unit has the following protection functions

- 1) Current cut-off protection
- 2) Power supply phase sequence protection
- 3) Protection for over-low suction pressure
- 4) Protection for compressor overcurrent
- 5) Protection for compressor overload
- 6) Anti-freezing protection
- 7) Protection for over-high discharge pressure
- 8) Protection for outlet and inlet water temperature

7.4.2 The unit also has other control functions

- 1) Plug and play system
- 2) RS-485/TS232 Standard serial communication port

7.5 Troubleshooting

Table 7-1

Error	Possible reason	Detect and settle measure
Over high air discharge pressure (Cooling operation)	Air or other non-condensing gas still in the system	Discharge gas from fluorin charging inlet. Re-vacuum the system if necessary.
	Fins in the condenser are dirty or foreign substance blocking fins.	Clean condenser fins.
	Insufficient chilling air volume or condenser fan error	Check and repair the condenser fan, recover the normal operation
	Excessive high air suction pressure	See "Excessive high air suction pressure"
	Excessive refrigerant charging volume	Discharge the excessive refrigerant
	Over high ambient temperature	Check ambient temperature
Over low air discharge pressure (Cooling operation)	Over cool air in the side of air heat exchanger	Check ambient temperature
	Refrigerant leakage or insufficient refrigerant volume	Test leakage or charge sufficient refrigerant to the system
	Excessive low air suction pressure	See "Excessive low air suction pressure"
Over high air suction pressure (Cooling operation)	Excessive refrigerant charging volume	Discharge the excessive refrigerant
	Over high temperature in chilling water inlet	Check thermal insulation layer of water pipe and the specification of this layer
Over low air suction pressure (Cooling operation)	Insufficient water flow volume	Check temperature difference at water inlet and outlet, and adjust the water flow volume
	Over low temperature in chilling water inlet and outlet	Check and installation state
	Refrigerant leakage or insufficient refrigerant volume	Test leakage or charge sufficient refrigerant to the system
	Incrustant in evaporator	Eliminate incrustant
Over high air discharge pressure (Heating operation)	Insufficient water flow	Check temperature difference at water inlet and outlet, and adjust the water flow volume
	Air or other non-condensing gas still in the system	Discharge gas from fluorin charging inlet. Re-vacuum the system if necessary.
	Incrustant in water side of heat exchanger	Eliminate incrustant
	Over high temperature in chilling water inlet	Check water temperature
	Excessive high air suction pressure	See "Excessive high air suction pressure"
Over low air discharge pressure (Heating operation)	Over low temperature of chilling water	Check chilling water temperature
	Refrigerant leakage or insufficient refrigerant volume	Test leakage or charge sufficient refrigerant to the system
	Excessive low air suction pressure	See "Excessive low air suction pressure"
Over high air suction pressure (Heating operation)	Over heat air in the side of air heat exchanger	Check ambient temperature around it
	Excessive refrigerant charging volume	Discharge the excessive refrigerant
Over low air suction pressure (Heating operation)	Insufficient refrigerant charging volume	Charge sufficient refrigerant to the system
	Insufficient air flow volume	Check fan rotating direction
	Air loop short-circuit	Reason about remove air short-circuit
	Insufficient frost-removal operation	Error comes out from 4-way valve or thermal resistor. Replace a new one if necessary.
Compressor stops because of freeze-proof protection (Cooling operation)	Insufficient chilling water flow volume	Error comes from pump or flow-type water volume control. Check and repair or replace a new one.
	Gas still in water loop	Discharge air
	Thermal resistor error	Upon error have been confirmed, please replace a new one.
Compressor stops because of Hi-pressure protection	Over high air expelling pressure	See "Over high air expelling pressure"
	Hi-pressure switch error	Upon error have been confirmed, please replace a new one.

Table 7-1

Error	Possible reason	Detect and settle measure
Compressor stops because of motor Overcurrent.	Over high air expelling pressure and air suction pressure	See "Over high air expelling pressure" and "Over high air suction pressure"
	Hi-voltage or Lo-voltage, signal phase or phase unbalance	Confirm voltage not higher or lower than the rated voltage 20V
	Short circuit comes out from motor or connecting interface	Confirm resistors at motor are connected corresponding to terminals
	Overcurrent assembly error	Replace a new one
Compressor stops because of integrate temperature sensor or air discharge temperature protection.	Over high or over low voltage	Confirm voltage not higher or lower than the rated voltage 20V
	Over high air expelling pressure or excessive low air suction pressure	See "Over high air expelling pressure" and "excessive low air suction pressure"
	Component error	Check the integrated temperature sensor after motor is cool down.
Compressor stops because of Lo.-pressure protection	Filter in front (or rear) of expanding valve is blocked	Replace a new filter
	Lo-voltage switch error	If the switch is defective, please replace a new one.
	Excessive low air suction pressure	See "Excessive low air suction pressure"
Abnormal noise gives out form compressor	Liquid refrigerant flows into compressor from evaporator result in liquid slugging.	Adjust refrigerant charge volume
	Aging of compressor	Replace a new compressor
Compressor is unable to drive	Overcurrent relay trip up, fuse burnt out	Replace damaged assembly
	Control circuit without power though	Check the wiring of control system
	Hi-voltage or lo-voltage protection	Reference to mention in above the parts of air suction and discharge pressure error
	Coils in contactor are burnt out	Replace damaged assembly
	Wrong connection of phase sequence	Re-connect and adjust the any 2 wires among 3 phases
	Water system error and flow type volume controller short connection	Check water system
	Error signal delivered from wire controller	Find out the error type and carry out the corresponding measure to settle
Air side heat exchanger excessive frost	4-way valve or thermal resistor error	Check the running state. Replace a new one if necessary.
	Air loop short-circuit	Settle the short-circuit of air discharge
With noise	Fixing screws at panel are loosen	Fix up all assemblies

8. MAINTENANCE AND UPKEEP

8.1 Failure information and code



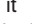
In case the unit runs under abnormal condition, failure protection code will display on both control panel and wired controller, and the indicator on the wired controller will flash with 1Hz. The display codes are shown in the following table:

Table 8-1

Nº	Code	Content
1	1E0	EEPROM error of main control board
	2E0	EEPROM error of inverter module A
	3E0	EEPROM error of inverter module B
2	E1	Power phase sequence error
3	E2	Communication error between main control board and wired controller
4	E3	Total water outlet temperature sensor (Tw) error (Master only)
5	E4	Water outlet temperature sensor (Two) error
6	E5	Condenser tube temperature sensor (T3) error
7	E7	Outdoor ambient temperature sensor (T4) error
8	E9	Water flow detection error (protection occurs for 3 times in 60 minutes and the failure can be recovered by power disconnection only)
		Evaporator anti-freezing temperature sensor (Taf1) error
		Evaporator anti-freezing temperature sensor (Taf2) error
10	EC	Wired controller detected that the units on-line reduction
11	1Ed	Compressor discharge temperature sensor (TP1) error
	2Ed	Compressor discharge temperature sensor (TP2) error
12	EF	Inlet water temperature sensor (Twi) error
13	EH	System self-check error alarm
14	EP	Compressor discharge temperature sensor error alarm
15	EU	Total cooling outlet temperature sensor (Tz/7) error
16	P0	High pressure (>44Bar) or compressor discharge temperature (>110°C) protection (protection occurs for 5 times in 120 minutes and the failure can be recovered by power disconnection only)
		Low pressure (<1.4Bar) protection (protection occurs for 5 times in 120 minutes and the failure can be recovered by power disconnection only)
17	P1	System A current (≥25A) protection (protection occurs for 5 times in 120 minutes and the failure can be recovered by power disconnection only)
18	P4	System B current (≥25A) protection (protection occurs for 5 times in 120 minutes and the failure can be recovered by power disconnection only)
19	P5	System B current (≥25A) protection (protection occurs for 5 times in 120 minutes and the failure can be recovered by power disconnection only)

Nº	Code	Content
20	1P6	System A inverter module protection
	2P6	System B inverter module protection
21	P7	Condenser tube (T3>65°C) and Total cooling outlet (Tz/7>62°C) high temperature protection
		Protection of outlet and inlet water temperature (≥12°C) difference protection (protection occurs for 3 times in 60 minutes and the failure can be recovered by power disconnection only)
22	P9	Inlet water high temperature in cooling mode
23	PA	System anti-freezing protection (≤4°C in normal water outlet mode and ≤0°C in low water outlet mode)
24	Pb	Evaporator pressure low in cooling mode
25	PC	Low temperature (≤3°C in normal water outlet mode and ≤0°C in low water outlet mode) protection evaporator (manual recovery)
26	PE	Ambient temperature (T4) high temperature protection in heating mode
27	PH	Module high temperature (Tf1 or Tf2>82°C) protection (protection occurs for 3 times in 100 minutes and the failure can be recovered by power disconnection only)
28	PL	DC fan1 module protection
		DC fan2 module protection
29	1PU	System A IPM module communication error
		System B IPM module communication error
30	1H0	Under/Over voltage (V≥260V or V<165V) protection
31	H1	Three times 1PP protection within one hour (power off recovery)
32	1H4	Three times 2PP protection within one hour (power off recovery)
	2H4	Three times 2PP protection within one hour (power off recovery)
33	1H6	System 1 DC bus voltage error
	2H6	System 2 DC bus voltage error
34	Fb	Pressure sensor error
35	Fd	Gas suction temperature (Th) protection error
36	1FF	DC fan 1 error
	2FF	DC fan 2 error
37	FP	DIP inconsistency of multiple water pumps (Power failure recovery required)
38	L0	Inverter module protection
39	L1	DC bus low voltage protection
40	L2	DC bus high voltage protection
41	L4	MCE error
42	L5	Zero speed protection
43	L7	Phase sequence error
44	L8	Compressor frequency variation greater than 15Hz
45	L9	Actual compressor frequency differs from target frequency by more than 15Hz protection
46	dF	Defrosting prompt

8.2 Ordinary displayed data

- Ordinary displayed data are displayed in all display pages.
- If the unit system is under running state, i.e. one or more than one Modular unit is under running operation, there will be a dynamic display of . If the system is under OFF state, there is no display.
- If the communication with the main unit Modular unit is fail, it displays E2
- If it is under the host computer network control,  displays, otherwise there is no display.
- If it is under wired controller locked or button locked state, it displays  the lock mark. There will be no display after the lock is unlocked.

8.3 Treatment of display data

The data display area is divided into Up area and Down area, with two groups of two-digit half 7-segment digital display, respectively.

a. Temperature display

Temperature display is used for displaying the total outlet water temperature of unit system, outlet water temperature, condenser pipe temperature T3A of system A, condenser pipe temperature T3B of system B, outdoor environmental temperature T4, anti-freezing temperature T6 and setting temperature Ts, with allowable data display scope -15℃~70℃. If the temperature is higher than 70℃, it is displayed as 70℃. If there is no effective date, it displays “—” and indication point °C is on.

b. Current display

Current display is used for displaying Modular unit system A compressor current IA or system B compressor current IB, with allowable display scope 0A~99A. If it is higher than 99A, it is displayed as 99A. If there is no effective date, it displays “—” and indication point A is on.

c. Failure display

It is used for displaying the total failure warning date of unit or that of Modular unit, with failure display scope E0~EF, E indicating failure, 0~F indicating failure code. “E-” is displayed when there is no failure and indication point # is on at the same time.

d. Protection display

It is used for displaying the total system protection data of unit or the system protection data of Modular unit, with protection display scope P0~PF, P indicating system protection, 0~F indicating protection code. “P-” is displayed when there is no failure.

e. Unit number display

It is used for displaying the address number of the currently selected Modular unit, with display scope 0~15 and indication point # is on at the same time.

f. Display of online unit number and startup unit number

They are used for displaying the total online Modular units of the whole unit system and the number of the Modular unit under running state, respectively, with display scope 0~16. Any time when the spot check page is entered to display or change Modular unit, it is needed to wait for the up-to-date data of the Modular unit received and selected by wired controller. Before receiving the data, the wired controller only displays “—” on the data display Down area, and the Up area displays the address number of the Modular unit. No page can be turned, which continues until the wired controller receives the communication data of this Modular unit.

8.4 Query display

Press the “▲” or “▼” key of wire controller to adjust the main unit serial number can query 16 sets main units' status information from #0~#15. Press “◀” or “▶” to adjust the spot check sequence number of one main unit then can query all the status information of this unit.

Spot check content according to the main unit model wired controller:

Nº	Value	Content
0		Standby: Module address (Left display) + number of on-line units (Right display) ON: Display frequency Defrosting: dF and operating frequency flash alternately at 1s intervals. In case of Pb protection, Pb and operating frequency flash alternately at 1s intervals.
1	0.xx	Module address
2	1.xx	Module capacity
3	2.xx	Number of modules (Master unit included)
4	3.xx	Ambient temperature (T4) capacity revision
5	4.xx	Operation mode (8 --> OFF; 0--> Standby; 1--> Cooling; 2 --> Heating)
6	5.xx	Fan speed 1 index
7	6.xx	Fan speed 2 index
8	7.xx	Condenser tube temperature (T3)
9	8.xx	Outdoor ambient temperature (T4)
10	9.xx	Reserved (T5)
11	10.xx	Evaporator anti-freezing temperature (Taf1)
12	11.xx	Evaporator anti-freezing temperature (Taf2)
13	12.xx	Total water outlet temperature (Tw)
14	t.xx	Inlet water temperature (Twi, displays to decimal places)
15	14.xx	Outlet water temperature (Two)
16	15.xx	Total cooling outlet temperature (Tz/7)
17	16.xx	Reserved (TheatR)
18	17.xx	Compressor discharge temperature (Tp1)
19	18.xx	Compressor discharge temperature (Tp2)
20	19.xx	Compressor module temperature (Tf1)
21	20.xx	Compressor module temperature (Tf2)
22	21.xx	Air discharge superheat degree DSH
23	22.xx	Current of compressor 1
24	23.xx	Current of compressor 2
25	24.xx	Current of PUMP
26	25.xx	Electronic expansion valve 1 opening (step=value displayed * 4)
27	26.xx	Electronic expansion valve 2 opening (step=value displayed * 4)
28	27.xx	High pressure
29	L.xx	Low pressure (displays to decimal places)
30	29.xx	Air suction superheat degree
31	30.xx	Air suction temperature (Th)
32	31.xx	Silent operation
33	32.xx	Static pressure selection
34	33.xx	DC bus low voltage 1 (Reserved)
35	34.xx	DC bus low voltage 2 (Reserved)
36	35.xx	Last fault
37	36.xx	Limit frequency No. (0--> no limits; 1--> ambient temp. (T4) limit freq.; 2--> voltage limit freq.; 3--> air discharge limit freq.; 4 --> low voltage ratio; 5--> instant limit freq.; 6--> current limit freq.; 7--> voltage limit freq.; 8--> pressure ratio and capacity demand adjusting; 9--> cooling low pressure limit freq.)
38	37.xx	Defrosting process status (the 1st digit--> T4 selection solution, the 2nd digit --> scheme's range; 3rd and 4rd digits as whole indicates the defrosting time)
39	38.xx	EEPROM failure (1 indicates failure, and 0 indicates no failure)
40	39.xx	Defrosting scheme
41	40.xx	Initial frequency
42	41.xx	Saturation temp. (Tc, reserved)
43	42.xx	Saturation temp. (Te, reserved)
44	43.xx	--

8.5 Care and maintenance

Maintenance period

It's recommended that before cooling in summer and heating in winter every year, consult local air conditioner customer service center to check and maintain the unit, to prevent air conditioner errors which bring inconvenience to your life and work.

Maintenance of main parts

- Close attention should be paid to the discharge and suction pressure during the running process. Find out reasons and eliminate the failure if abnormality is found.
- Control and protect the equipment. See to it that no random adjustment be made on the set points on site.
- Regularly check whether the electric connection is loose, and whether there is bad contact at the contact point caused by oxidation and debris etc., and take timely measures if necessary. Frequently check the work voltage, current and phase balance.
- Check the reliability of the electric elements in time. Ineffective and unreliable elements should be replaced in time.

8.6 Removing scale

After long-time operation, calcium oxide or other minerals will be settled in the heat transfer surface of the water-side heat exchanger. These substances will affect the heat transfer performance when there is too much scale in the heat transfer surface and sequentially cause that electricity consumption increases and the discharge pressure is too high (or suction pressure too low). Organic acids such as formic acid, citric acid and acetic acid may be used to clean the scale. But in no way should cleaning agent containing fluoroacetic acid or fluoride should be used as the water-side heat exchange is made from stainless steel and is easy to be eroded to cause refrigerant leakage. Pay attention to the following aspects during the cleaning and scale-removing process:

- Water-side heat exchanger should be done by professionals. Please contact the local air-conditioner customer service center.
- Clean the pipe and heat exchanger with clean water after cleaning agent is used. Conduct water treatment to prevent water system from being eroded or re-absorption of scale.
- In case of using cleaning agent, adjust the density of the agent, cleaning time and temperature according to the scale settlement condition.
- After pickling is completed, neutralization treatment needs to be done on the waste liquid. Contact relevant company for treating the treated waste liquid.
- Protection equipments (such as goggles, gloves, mask and shoes) must be used during the cleaning process to avoid breathing in or contacting the agent as the cleaning agent and neutralization agent is corrosive to eyes, skins and nasal mucosa.

8.7 Winter shutdown

For shutdown in winter, the surface of the unit outside and inside should be cleaned and dried. Cover the unit to prevent dust. Open discharge water valve to discharge the stored water in the clean water system to prevent freezing accident (it is preferable to inject antifreezer in the pipe).

8.8 Replacing parts

Parts to be replaced should be the ones provided by our company. Never replace any part with different part.

8.9 First startup after shutdown

The following preparations should be made for re-startup of unit after long-time shutdown:

- 1) Thoroughly check and clean the unit.
- 2) Clean water pipe system.
- 3) Check pump, control valve and other equipments of water pipe system.
- 4) Fix connections of all wires.
- 5) It is a must to electrify the machine 12 hours before startup.

8.10 Refrigeration system

Determine whether refrigerant is needed by checking the value of suction and discharge pressure and check whether there is a leakage. Air tight test must be made if there is a leakage or parts of refrigerating system is to be replaced. Take different measures in the following two different conditions from refrigerant injection.

- 1) Total leakage of refrigerant. In case of such situation, leakage detection must be made on the pressurized nitrogen used for the system. If repair welding is needed, welding cannot be made until all the gas in the system is discharged. Before injecting refrigerant, the whole refrigeration system must be completely dry and of vacuum pumping.
 - Connect vacuum pumping pipe at the fluoride nozzle at low-pressure side.
 - Remove air from the system pipe with vacuum pump. The vacuum pumping lasts for above 3 hours. Confirm that the indication pressure in dial gauge is within the specified scope.
 - When the degree of vacuum is reached, inject refrigerant into the refrigeration system with refrigerant bottle. Appropriate amount of refrigerant for injection has been indicated on the nameplate and the table of main technical parameters. Refrigerant must be injected from the low pressure side of system.
 - The injection amount of refrigerant will be affected by the ambient temperature. If the required amount has not been reached but no more injection can be done, make the chilled water circulate and start up the unit for injection. Make the low pressure switch temporarily short circuit if necessary.
- 2) Refrigerant supplement. Connect refrigerant injection bottle on the fluoride nozzle at low-pressure side and connect pressure gauge at low pressure side.
 - Make chilled water circulate and start up unit, and make the low pressure control switch short circuit if necessary.
 - Slowly inject refrigerant into the system and check suction and discharge pressure.



CAUTION

- Connection must be renewed after injection is completed.
- Never inject oxygen, acetylene or other flammable or poisonous gas to the refrigeration system at leakage detection and air tight test. Only pressurized nitrogen or refrigerant can be used.

8.11 Disassembling compressor

Follow the following procedures if compressor needs to be disassembled:

- 1) Cut off the power supply of unit.
- 2) Remove power source connection wire of compressor.
- 3) Remove suction and discharge pipes of compressor.
- 4) Remove fastening screw of compressor.
- 5) Move the compressor.

8.12 Auxiliary electric heater

When the ambient temperature is lower than 2℃, the heating efficiency decreases with the decline of the outdoor temperature. In order to make the air-cooled heat pump stably run in a relatively cold region and supplement some heat lost due to de-frosting. When the lowest ambient temperature in the user's region in winter is within 0℃~10℃, the user may consider to use auxiliary electric heater. Please refer to relevant professionals for the power of auxiliary electric heater.

8.13 System antifreezing

In case of freezing at the water-side heat exchanger interval channel, severe damage may be caused, i.e. heat exchange may be broken and appears leakage. This damage of frost crack is not within the warranty scope, so attention must be paid to antifreezing.

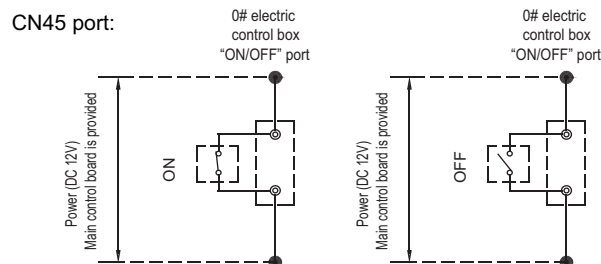
1) If the unit that is shutdown for standby is placed in an environment where the outdoor temperature is lower than 0℃, the water in the water system should be drained.

2) Water pipe may be frozen when the chilled water target flow controller and anti-freezing temperature sensor become ineffective at running, therefore, the target flow controller must be connected in accordance with the connection diagram.

3) Frost crack may happen to water-side heat exchanger at maintenance when refrigerant is injected to the unit or is discharged for repair. Pipe freezing is likely to happen any time when the pressure of refrigerant is below 0.4Mpa. Therefore, the water in the heat exchanger must be kept flowing or be thoroughly discharged.

8.14 Wiring of “ON/OFF” weak electric port

First, corresponding parallel connect the “ON/OFF” port of the main unit's electric control box, then, connect the “ON/OFF” signal (provide by user) to the “ON/OFF” port of main unit as follows.

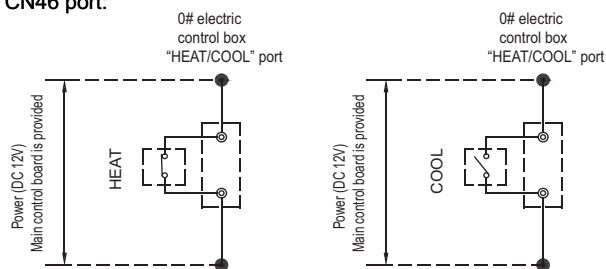


If the “ON/OFF” port is effective ,the “” icon of the wire controller will be flashing.

8.15 Wiring of “HEAT/COOL” weak electric port

First, corresponding parallel connect the “HEAT/COOL” port of the main unit's electric control box, then, connect the “ON/OFF” signal (provide by user) to the “HEAT/COOL” port of main unit as follows.

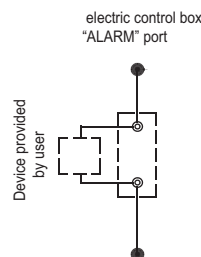
CN46 port:



8.16 Wiring of “ALARM” port

Connect the device provided by user to the “ALARM” ports of the module units as follows.

CN21 port:



If the unit is operating unnormally, the ALARM port is closed, otherwise, the ALARM port is not closed.

8.17 Important information for the used refrigerant

This product has the fluorinated gas, it is forbidden to release to air. Refrigerant type: R410A; Volume of GWP: 2088; GWP=Global Warming Potential

Model	Factory charge	
	Refrigerant/kg	tonnes CO ₂ equivalent
30	10.50	21.94
60	17.00	35.50

Attention:

Frequency of Refrigerant Leak Checks

- 1) For equipment that contains fluorinated greenhouse gases in quantities of 5 tonnes of CO₂ equivalent or more, but of less than 50 tonnes of CO₂ equipment, at least every 12 months, or where a leakage detection system is installed, at least every 24 months.
- 2) For equipment that contains fluorinated greenhouse gases in quantities of 50 tonnes of CO₂ equivalent or more, but of less than 500 tonnes of CO₂ equipment, at least every six months, or where a leakage detection system is installed, at least every 12 months.
- 3) For equipment that contains fluorinated greenhouse gases in quantities of 500 tonnes of CO₂ equivalent or more, at least every three months, or where a leakage detection system is installed, at least every six months.
- 4) Non-hermetically sealed equipment charged with fluorinated greenhouse gases shall only be sold to the end user where evidence is provided that the installation is to be carried out by an undertaking certified person.
- 5) Only certificated person is allowed to do installation, operation and maintenance.

RECORD TABLE OF TEST RUN AND MAINTENANCE

Table 8-2

Model:	Code labeled on the unit:
Customer name and address:	Date:

1. Whether there is sufficient water flow passing waterside heat exchanger? ()
2. Whether leakage detection has been made on all the water pipe? ()
3. Whether pump, fan and motor are lubricated? ()
4. Whether unit has been through 30-minute operation? ()
5. Check temperature of chilled water or hot water
 Inlet () Outlet ()
6. check air temperature of air-side heat exchanger:
 Inlet () Outlet ()
7. Check refrigerant suction temperature and superheating temperature:
 Refrigerant suction temperature: ()()()()()
 Superheating temperature: ()()()()()
8. Check pressure:
 Discharge pressure: ()()()()()
 Suction pressure: ()()()()()
9. Check running current: ()()()()()
10. Whether unit has been through refrigerant leakage test? ()
11. Whether unit inside and outside is cleared? ()
12. Whether there is noise on all the panels of unit? ()
13. Check whether the main power source connection is correct. ()

RECORD TABLE OF ROUTINE RUNNING

Table 8-3

Model:												
Date:												
Weather:												
Operation time: Startup () Shutdown ()												
Outdoor temperature	Dry bulb	°C										
	Wet bulb	°C										
Indoor temperature		°C										
Compressor	High pressure	MPa										
	Low pressure	MPa										
	Voltage	V										
	Current	A										
Air temperature of air-side heat exchanger	Inlet (dry bulb)	°C										
	Outlet (dry bulb)	°C										
Temperature of chilled water or hot water	Inlet	°C										
	Outlet	°C										
Current of cooling water pump or hot water pump		A										
Note:												

9. APPLICABLE MODELS AND MAIN PARAMETERS

Table 9-1

Model MUENR-			30-H7T	30-H7T(K)	30-H7T(K2)	60-H7T	60-H7T(K)
Code			CL 25 630	CL 25 631	CL 25 634	CL 25 632	CL 25 633
Cooling (1)	Capacity	kW	27		27,6	55	
	Power input	kW	10,8	12	11,4	22	23,2
	Current	A	16,7	19,7	18,7	33,9	36,9
	EER	W/W	2,50	2,25	2,42	2,50	2,37
Heating (2)	Capacity	kW	31			61	
	Power input	kW	10,5	11,7	11,2	20,3	21,5
	Current	A	16,2	19,2	18,4	31,3	34,3
	COP	W/W	2,95	2,65	2,77	3,00	2,84
Max. Current		A	18	21	21	36,8	39,8
Sound pressure (3)		dB(A)	65,8	65,8	65,8	72,1	72,1
Sound power (3)		dB(A)	78	78	78	84	86
Power supply		F, V, Hz	3N-, 400, 50				
Compressor	Brand		Mitsubishi Electric				
	Model		LNB65FAEMC				
	Type		DC Twin-Double Rotary				
	Quantity		1			2	
Fan	Type		DC				
	Quantity		1			2	
	Air flow	m ³ /h	12.500			24.000	
Water exchanger	Type		Plate				
	Water pressure drop	kPa	60			80	
	Volume	L	2,44			5,17	
	Rated flow (Min-Max)	m3/h	5,0 (3,8 ~ 6,4)			9,8 (8,0 ~ 13,0)	
	Max. design pressure	Mpa	1				
	Hydraulic connections	mm (pulg.)	DN40 (1 1/2")			DN50 (2")	
Water pump	Model		--	Grundfos CM10-2A (98669754)	Grundfos CM5-3A (96806817)	--	Grundfos CM10-2A (98669754)
	Water flow	m ³ /h	--	10	4,7	--	10
	Pressure	kPa (mca)	--	280 (28,6)	210 (21,45)	--	280 (28,6)
	Elevation	m	--	27,1	22,8	--	27,1
Expansion vessel		L	--	5	5	--	12
Dimensions (W x H x D)		mm	1870 x 1175 x 1000			2220 x 1325 x 1055	
Weight		Kg	300	335	315	480	515
Refrigerant	Type		R410A				
	Quantity	Kg	10,5			17	
Electrical connections	Power wiring (4) / ICP	mm ² / A	4 x 10 + T / 36			4 x 25 + T / 70	
	Communication wiring (5)	mm ²	3 x 0,75 (Shielded)				
Ambient temperature in operation	Cooling	°C	-15 a 43				
	Heating	°C	-15 a 24				
Water temperature in operation	Cooling (6)	°C	0 ~20				
	Heating	°C	25 ~ 55				

Note:

(1) Nominal conditions cooling: Water temperature 12 °C (Inlet), 7 °C (Outlet), outdoor temperature 35 °C DB. Water flow rate 0.172 m³/(h·KW)

(2) Nominal heating conditions: Water temperature 40 °C (Inlet), 45 °C (Outlet), outdoor temperature 7 °C DB and 6 °C WB. Water flow rate 0.172 m³/(h·KW)

(3) Sound level measured in semi-anechoic chamber at 1m front distance and 1,1m high.

(4) Power wiring recommended for L < 20 m, for longer distances it should be calculated.

(5) Wiring for interconnection of several modules.

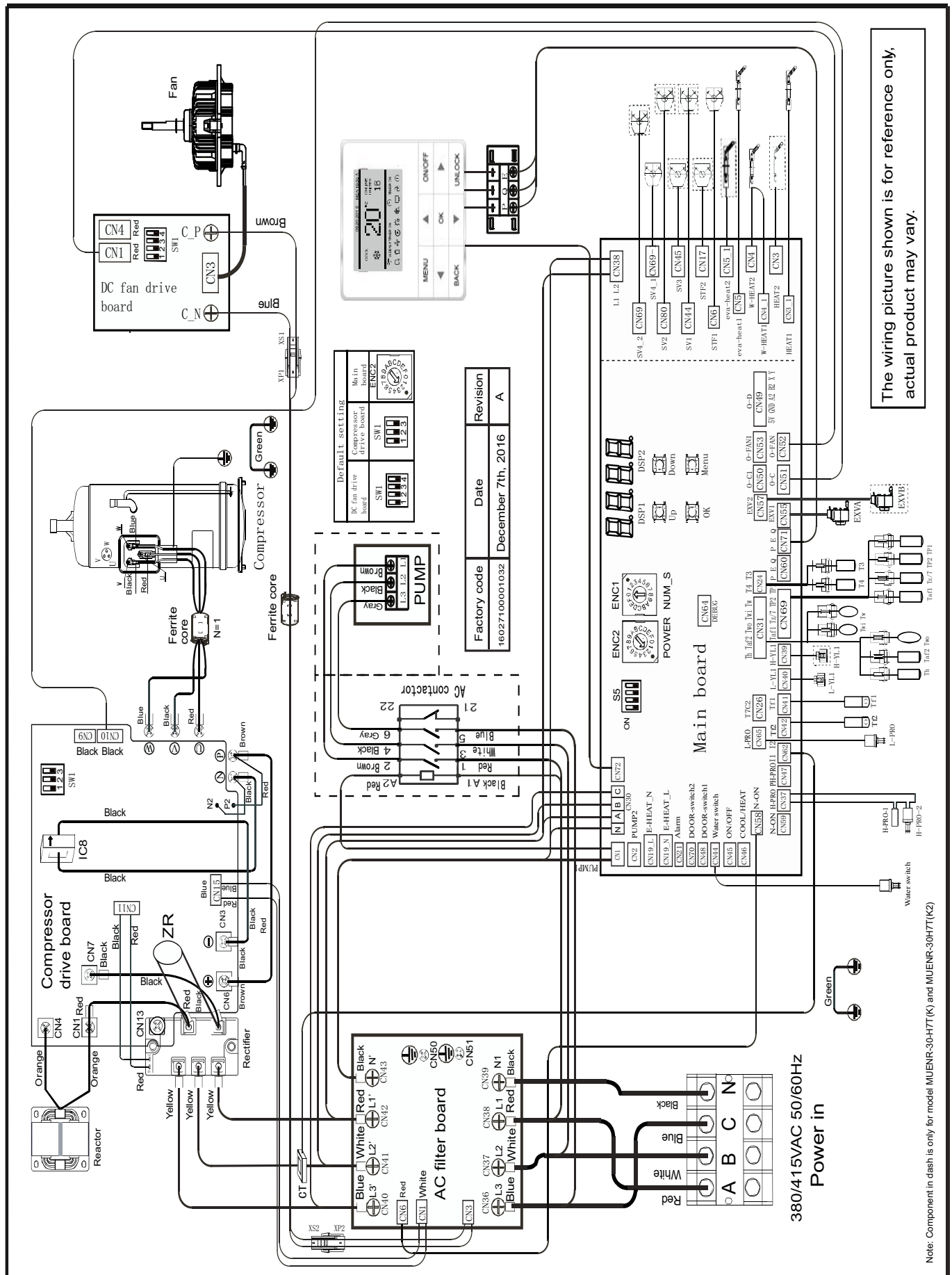
(6) Below 5 °C, antifreeze must be added to the hydraulic circuit and the S5-1 (on all modules) must be set to ON.

Attention:

- Do not use groundwater or well water directly.

- The hydraulic circuit must be closed.

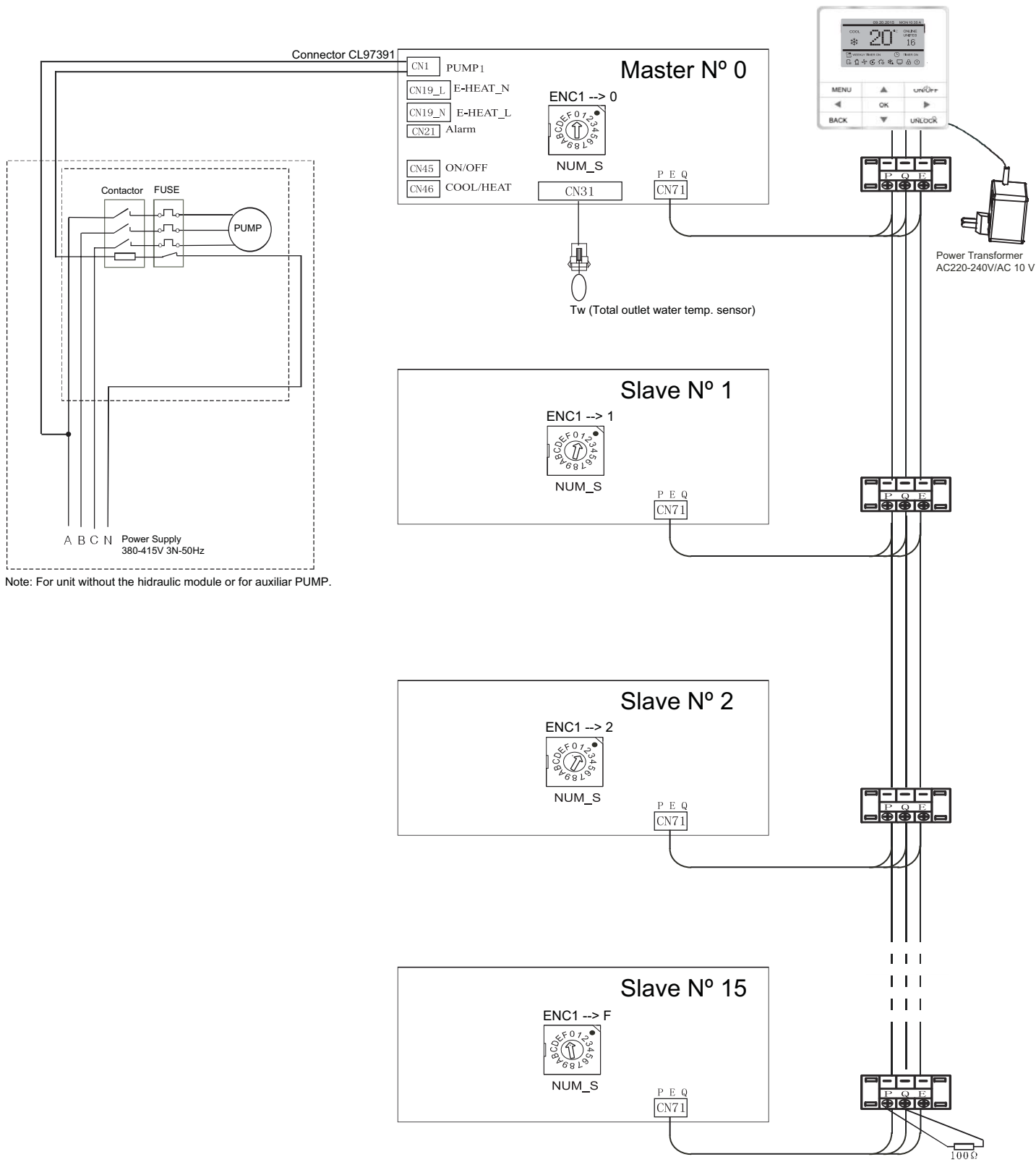
- The design and specifications are subject to change without prior notice for product improvement.

ATTACHED PICTURE (I):**Wiring diagram: MUENR-30-H7T; MUENR-30-H7T(K); MUENR-30-H7T(K2)**

[illegible]

ATTACHED PICTURE (II):

Wiring diagram: Communication Schematic of Main Unit and Slaves Units



INFORMATION REQUIREMENTS

Cooling - Information requirements for comfort chillers

Information requirements for comfort chillers								
Model(s): MUENR-30-H7T								
Outdoor side heat exchanger of air conditioner: Air								
Indoor side heat exchanger of air conditioner: Water								
Type: compressor driven vapour compression								
If applicable: driver of compressor: electric motor								
Item	Symbol	Value	Unit		Item	Symbol	Value	Unit
Rated cooling capacity	Prated,c	27,58	kW		Seasonal space cooling energy efficiency	ηs,c	150,0	%
Declared cooling capacity for part load at given outdoor temperatures Tj					Declared energy efficiency ratio or gas utilisation efficiency/auxiliary energy factor for part load at given outdoor temperatures Tj			
Tj = +35°C	Pdc	27,58	kW		Tj = +35°C	EERd	2,52	—
Tj = +30°C	Pdc	22,00	kW		Tj = +30°C	EERd	3,64	—
Tj = +25°C	Pdc	14,96	kW		Tj = +25°C	EERd	5,15	—
Tj = +20°C	Pdc	8,12	kW		Tj = +20°C	EERd	6,49	—
Degradation co-efficient for chillers (*)	Cdc	0,9	—					
Power consumption in modes other than 'active mode'								
Off mode	P _{OFF}	0,075	kW		Crankcase heater mode	PCK	0,075	kW
Thermostat-off mode	P _{TO}	0,206	kW		Standby mode	PSB	0,075	kW
Other items								
Capacity control	variable				For air-to-water comfort chillers: air flow rate, outdoor measured	—	12500	m³/h
Sound power level outdoor	L _{WA}	—/78	dB		For water/brine-to- water chillers: Rated brine or water flow rate, outdoor side heat exchanger	—	—	m3/h
Emissions of nitrogen oxides (if applicable)	NO _x (**)	—	mg/kWh fuel input GCV					
GWP of the refrigerant	—	2088	kg CO2 eq (100 years)					
Contact details	SALVADOR ESCODA SA PROVENZA 392 P2 08025 BARCELONA (SPAIN) +34 93 446 27 80							
(*) If Cdc is not determined by measurement then the default degradation coefficient of heat pumps shall be 0,9								
(**) From 26 September 2018								

Information requirements for comfort chillers								
Model(s): MUENR-30-H7T(K2)								
Outdoor side heat exchanger of air conditioner: Air								
Indoor side heat exchanger of air conditioner: Water								
Type: compressor driven vapour compression								
If applicable: driver of compressor: electric motor								
Item	Symbol	Value	Unit		Item	Symbol	Value	Unit
Rated cooling capacity	Prated,c	28,20	kW		Seasonal space cooling energy efficiency	ηs,c	154,0	%
Declared cooling capacity for part load at given outdoor temperatures Tj					Declared energy efficiency ratio or gas utilisation efficiency/auxiliary energy factor for part load at given outdoor temperatures Tj			
Tj = +35°C	Pdc	28,20	kW		Tj = +35°C	EERd	2,52	—
Tj = +30°C	Pdc	22,30	kW		Tj = +30°C	EERd	3,74	—
Tj = +25°C	Pdc	14,67	kW		Tj = +25°C	EERd	5,23	—
Tj = +20°C	Pdc	8,51	kW		Tj = +20°C	EERd	7,14	—
Degradation co-efficient for chillers (*)	Cdc	0,9	—					
Power consumption in modes other than 'active mode'								
Off mode	P _{OFF}	0,075	kW		Crankcase heater mode	PCK	0,075	kW
Thermostat-off mode	P _{TO}	0,425	kW		Standby mode	PSB	0,075	kW
Other items								
Capacity control	variable				For air-to-water comfort chillers: air flow rate, outdoor measured	—	12500	m ³ /h
Sound power level outdoor	L _{WA}	—/78	dB		For water/brine-to- water chillers: Rated brine or water flow rate, outdoor side heat exchanger	—	—	m3/h
Emissions of nitrogen oxides (if applicable)	NO _x (**)	—	mg/kWh fuel input GCV					
GWP of the refrigerant	—	2088	kg CO2 eq (100 years)					
Contact details	SALVADOR ESCODA SA PROVENZA 392 P2 08025 BARCELONA (SPAIN) +34 93 446 27 80							
(*) If Cdc is not determined by measurement then the default degradation coefficient of heat pumps shall be 0,9								
(**) From 26 September 2018								

Information requirements for comfort chillers								
Model(s): MUENR-60-H7T								
Outdoor side heat exchanger of air conditioner: Air								
Indoor side heat exchanger of air conditioner: Water								
Type: compressor driven vapour compression								
If applicable: driver of compressor: electric motor								
Item	Symbol	Value	Unit		Item	Symbol	Value	Unit
Rated cooling capacity	Prated,c	55,50	kW		Seasonal space cooling energy efficiency	ηs,c	151,0	%
Declared cooling capacity for part load at given outdoor temperatures Tj					Declared energy efficiency ratio or gas utilisation efficiency/auxiliary energy factor for part load at given outdoor temperatures Tj			
Tj = +35°C	Pdc	55,50	kW		Tj = +35°C	EERd	2,43	—
Tj = +30°C	Pdc	41,84	kW		Tj = +30°C	EERd	3,44	—
Tj = +25°C	Pdc	25,89	kW		Tj = +25°C	EERd	4,82	—
Tj = +20°C	Pdc	11,93	kW		Tj = +20°C	EERd	4,89	—
Degradation co-efficient for chillers (*)	Cdc	0,9	—					
Power consumption in modes other than 'active mode'								
Off mode	P _{OFF}	0,064	kW		Crankcase heater mode	PCK	0,064	kW
Thermostat-off mode	P _{TO}	0,398	kW		Standby mode	PSB	0,064	kW
Other items								
Capacity control	variable				For air-to-water comfort chillers: air flow rate, outdoor measured	—	24000	m³/h
Sound power level outdoor	L _{WA}	—/87	dB		For water/brine-to- water chillers: Rated brine or water flow rate, outdoor side heat exchanger	—	—	m3/h
Emissions of nitrogen oxides (if applicable)	NO _x (**)	—	mg/kWh fuel input GCV					
GWP of the refrigerant	—	2088	kg CO2 eq (100 years)					
Contact details	SALVADOR ESCODA SA PROVENZA 392 P2 08025 BARCELONA (SPAIN) +34 93 446 27 80							
(*) If Cdc is not determined by measurement then the default degradation coefficient of heat pumps shall be 0,9								
(**) From 26 September 2018								

Information requirements for comfort chillers								
Model(s): MUENR-60-H7T(K)								
Outdoor side heat exchanger of air conditioner: Air								
Indoor side heat exchanger of air conditioner: Water								
Type: compressor driven vapour compression								
If applicable: driver of compressor: electric motor								
Item	Symbol	Value	Unit		Item	Symbol	Value	Unit
Rated cooling capacity	Prated,c	55,00	kW		Seasonal space cooling energy efficiency	ηs,c	168,0	%
Declared cooling capacity for part load at given outdoor temperatures Tj					Declared energy efficiency ratio or gas utilisation efficiency/auxiliary energy factor for part load at given outdoor temperatures Tj			
Tj = +35°C	Pdc	55,00	kW		Tj = +35°C	EERd	2,44	—
Tj = +30°C	Pdc	43,35	kW		Tj = +30°C	EERd	3,62	—
Tj = +25°C	Pdc	27,78	kW		Tj = +25°C	EERd	5,25	—
Tj = +20°C	Pdc	14,81	kW		Tj = +20°C	EERd	6,51	—
Degradation co-efficient for chillers (*)	Cdc	0,9	—					
Power consumption in modes other than 'active mode'								
Off mode	P _{OFF}	0,075	kW		Crankcase heater mode	PCK	0,075	kW
Thermostat-off mode	P _{TO}	0,600	kW		Standby mode	PSB	0,075	kW
Other items								
Capacity control	variable				For air-to-water comfort chillers: air flow rate, outdoor measured	—	24000	m³/h
Sound power level outdoor	L _{WA}	—/87	dB		For water/brine-to- water chillers: Rated brine or water flow rate, outdoor side heat exchanger	—	—	m3/h
Emissions of nitrogen oxides (if applicable)	NO _x (**)	—	mg/kWh fuel input GCV					
GWP of the refrigerant	—	2088	kg CO2 eq (100 years)					
Contact details	SALVADOR ESCODA SA PROVENZA 392 P2 08025 BARCELONA (SPAIN) +34 93 446 27 80							
(*) If Cdc is not determined by measurement then the default degradation coefficient of heat pumps shall be 0,9								
(**) From 26 September 2018								

INFORMATION REQUIREMENTS

Heating - Information requirements for heat pump space heaters and heat pump combination heaters

Information requirements for heat pump space heaters and heat pump combination heaters							
Model(s): MUENR-30-H7T							
Air-to-water heat pump: Yes							
Water-to-water heat pump: No							
Brine-to-water heat pump: No							
Low-temperature heat pump: Yes							
For low-temperature heat pumps, parameters shall be declared for low-temperature application. Otherwise, parameters shall be declared for medium-temperature application.							
Parameters shall be declared for average climate conditions.							
Item	Symbol	Value	Unit	Item	Symbol	Value	Unit
Rated heat output (*)	Prated	21	kW	Seasonal space heating energy efficiency	ηs	157	%
Declared capacity for heating for part load at outdoor temperature Tj				Declared coefficient of performance or primary energy ratio for part load at outdoor temperature Tj			
Tj = − 7 °C	Pdh	19,2	kW	Tj = − 7 °C	COPd	2,59	–
Tj = + 2 °C	Pdh	10,9	kW	Tj = + 2 °C	COPd	3,84	–
Tj = + 7 °C	Pdh	7,2	kW	Tj = + 7 °C	COPd	5,21	–
Tj = + 12 °C	Pdh	8,7	kW	Tj = + 12 °C	COPd	7,10	–
Tj = bivalent temperature	Pdh	22,2	kW	Tj = bivalent temperature	COPd	2,34	–
Tj = operation limit temperature	Pdh	22,2	kW	Tj = operation limit temperature	COPd	2,34	–
For air-to-water heat pumps:Tj = − 15 °C	Pdh	x,xx	kW	For air-to-water heat pumps:Tj = − 15 °C	COPd	x,xx	–
Bivalent temperature	Tbiv	-10	°C	For air-to-water HP : Operation limit temperature (maximum -7°C)	Tol	-10	°C
Cycling interval capacity for heating	Pcyc	x,xx	kW	Cycling interval efficiency	COPcyc	x,xx	–
Degradation coefficient (**)	Cdh	0,90	–	Heating water operating limit temperature	WTOL	x,xx	°C
Power consumption in modes other than active mode				Supplementary heater			
Off mode	P _{OFF}	0,08	kW	Rated heat output (**)	P _{sup}	x,xx	kW
Thermostat-off mode	P _{TO}	0,21	kW	Type of energy input	–		
Standby mode	P _{SB}	0,08	kW				
Crankcase heater mode	P _{CK}	0,08	kW				
Other items							
Capacity control	fixed/variable	variable	Outdoor heat exchanger				
Sound power level, indoors	L _{WA}	x	db(A)	For air-to-water HP: Rated air flow rate, outdoors	Q _{airsourse}	12500	m³/h
Sound power level, outdoors	L _{WA}	78	db(A)	For water-to-water HP: Rated water flow rate	Q _{watersource}	x	m³/h
Annual energy consumption	QHE	13189	kWh	For brine-to-water HP: Rated brine flow rate	Q _{brinesource}	x	m³/h
For heat pump combination heater:							
Declared load profile	–			Water heating energy efficiency	η _{wh}	x	%
Daily electricity consumption	Q _{elec}	x	kWh	Daily fuel consumption	Q _{fuel}	x	kWh
Annual electricity consumption	AEC	x	kWh	Annual fuel consumption	AFC	x	GJ
Contact details	SALVADOR ESCODA SA PROVENZA 392 P2 08025 BARCELONA (SPAIN) +34 93 446 27 80						
(*) For heat pump space heaters and heat pump combination heaters, the rated heat output Prated is equal to the design load for heating Pdesignh, and the rated heat output of asupplementary heater P _{sup} is equal to the supplementary capacity for heating sup(Tj).							
(**) If Cdh is not determined by measurement then the default degradation coefficient is Cdh = 0.9.							

Information requirements for heat pump space heaters and heat pump combination heaters							
Model(s): MUENR-30-H7T(K2)							
Air-to-water heat pump: Yes							
Water-to-water heat pump: No							
Brine-to-water heat pump: No							
Low-temperature heat pump: Yes							
For low-temperature heat pumps, parameters shall be declared for low-temperature application. Otherwise, parameters shall be declared for medium-temperature application.							
Parameters shall be declared for average climate conditions.							
Item	Symbol	Value	Unit	Item	Symbol	Value	Unit
Rated heat output (*)	Prated	20,8	kW	Seasonal space heating energy efficiency	ηs	128	%
Declared capacity for heating for part load at outdoor temperature Tj				Declared coefficient of performance or primary energy ratio for part load at outdoor temperature Tj			
Tj = – 7 °C	Pdh	18,47	kW	Tj = – 7 °C	COPd	2,56	–
Tj = + 2 °C	Pdh	10,26	kW	Tj = + 2 °C	COPd	3,64	–
Tj = + 7 °C	Pdh	6,69	kW	Tj = + 7 °C	COPd	4,73	–
Tj = + 12 °C	Pdh	6,63	kW	Tj = + 12 °C	COPd	6,04	–
Tj = bivalent temperature	Pdh	18,47	kW	Tj = bivalent temperature	COPd	2,56	–
Tj = operation limit temperature	Pdh	21,18	kW	Tj = operation limit temperature	COPd	2,25	–
For air-to-water heat pumps:Tj = – 15 °C	Pdh	x,xx	kW	For air-to-water heat pumps:Tj = – 15 °C	COPd	x,xx	–
Bivalent temperature	Tbiv	-7	°C	For air-to-water HP : Operation limit temperature (maximum -7°C)	Tol	-10	°C
Cycling interval capacity for heating	Pcyc	x,xx	kW	Cycling interval efficiency	COPcyc	x,xx	–
Degradation coefficient (**)	Cdh	0,90	–	Heating water operating limit temperature	WTOL	x,xx	°C
Power consumption in modes other than active mode				Supplementary heater			
Off mode	P _{OFF}	0,075	kW	Rated heat output (**)	Psup	x,xx	kW
Thermostat-off mode	P _{TO}	0,075	kW	Type of energy input	–		
Standby mode	P _{SB}	0,5	kW				
Crankcase heater mode	P _{CK}	0,075	kW				
Other items							
Capacity control	fixed/variable	variable		Outdoor heat exchanger			
Sound power level, indoors	L _{WA}	x	db(A)	For air-to-water HP: Rated air flow rate, outdoors	Q _{airsource}	12500	m³/h
Sound power level, outdoors	L _{WA}	78	db(A)	For water-to-water HP: Rated water flow rate	Q _{watersource}	x	m³/h
Annual energy consumption	QHE	13189	kWh	For brine-to-water HP: Rated brine flow rate	Q _{brinesource}	x	m³/h
For heat pump combination heater:							
Declared load profile	–			Water heating energy efficiency	η _{wh}	x	%
Daily electricity consumption	Q _{elec}	x	kWh	Daily fuel consumption	Q _{fuel}	x	kWh
Annual electricity consumption	AEC	x	kWh	Annual fuel consumption	AFC	x	GJ
Contact details	SALVADOR ESCODA SA PROVENZA 392 P2 08025 BARCELONA (SPAIN) +34 93 446 27 80						
(*) For heat pump space heaters and heat pump combination heaters, the rated heat output Prated is equal to the design load for heating Pdesignh, and the rated heat output of asupplementary heater Psup is equal to the supplementary capacity for heating sup(Tj).							
(**) If Cdh is not determined by measurement then the default degradation coefficient is Cdh = 0,9.							

Information requirements for heat pump space heaters and heat pump combination heaters							
Model(s): MUENR-60-H7T							
Air-to-water heat pump: Yes							
Water-to-water heat pump: No							
Brine-to-water heat pump: No							
Low-temperature heat pump: Yes							
For low-temperature heat pumps, parameters shall be declared for low-temperature application. Otherwise, parameters shall be declared for medium-temperature application.							
Parameters shall be declared for average climate conditions.							
Item	Symbol	Value	Unit	Item	Symbol	Value	Unit
Rated heat output (*)	Prated	31	kW	Seasonal space heating energy efficiency	η_s	152	%
Declared capacity for heating for part load at outdoor temperature Tj				Declared coefficient of performance or primary energy ratio for part load at outdoor temperature Tj			
Tj = - 7 °C	Pdh	27,3	kW	Tj = - 7 °C	COPd	2,84	–
Tj = + 2 °C	Pdh	17,1	kW	Tj = + 2 °C	COPd	3,60	–
Tj = + 7 °C	Pdh	15,4	kW	Tj = + 7 °C	COPd	5,24	–
Tj = + 12 °C	Pdh	12,5	kW	Tj = + 12 °C	COPd	6,43	–
Tj = bivalent temperature	Pdh	27,3	kW	Tj = bivalent temperature	COPd	2,84	–
Tj = operation limit temperature	Pdh	31,5	kW	Tj = operation limit temperature	COPd	2,40	–
For air-to-water heat pumps:Tj = - 15 °C	Pdh	x,xx	kW	For air-to-water heat pumps:Tj = - 15 °C	COPd	x,xx	–
Bivalent temperature	Tbiv	-7	°C	For air-to-water HP : Operation limit temperature (maximum -7°C)	Tol	-10	°C
Cycling interval capacity for heating	Pcyc	x,xx	kW	Cycling interval efficiency	COPcyc	x,xx	–
Degradation coefficient (**)	Cdh	0,99	–	Heating water operating limit temperature	WTOL	x	°C
Power consumption in modes other than active mode				Supplementary heater			
Off mode	P _{OFF}	0,08	kW	Rated heat output (**)	Psup	xx,x	kW
Thermostat-off mode	P _{TO}	0,4	kW	Type of energy input	–		
Standby mode	P _{SB}	0,08	kW				
Crankcase heater mode	P _{CK}	0,08	kW				
Other items							
Capacity control	fixed/variable	variable	Outdoor heat exchanger				
Sound power level, indoors	L _{WA}	x	db(A)	For air-to-water HP: Rated air flow rate, outdoors	Q _{airsource}	24000	m³/h
Sound power level, outdoors	L _{WA}	87	db(A)	For water-to-water HP: Rated water flow rate	Q _{watersource}	x	m³/h
Annual energy consumption	QHE	18998	kWh	For brine-to-water HP: Rated brine flow rate	Q _{brinesource}	x	m³/h
For heat pump combination heater:							
Declared load profile	–			Water heating energy efficiency	η_{wh}	x	%
Daily electricity consumption	Qelec	x	kWh	Daily fuel consumption	Qfuel	x	kWh
Annual electricity consumption	AEC	x	kWh	Annual fuel consumption	AFC	x	GJ
Contact details	SALVADOR ESCODA SA PROVENZA 392 P2 08025 BARCELONA (SPAIN) +34 93 446 27 80						
(*) For heat pump space heaters and heat pump combination heaters, the rated heat output Prated is equal to the design load for heating Pdesignh, and the rated heat output of asupplementary heater Psup is equal to the supplementary capacity for heating sup(Tj).							
(**) If Cdh is not determined by measurement then the default degradation coefficient is Cdh = 0,9.							

Information requirements for heat pump space heaters and heat pump combination heaters							
Model(s): MUENR-60-H7T(K)							
Air-to-water heat pump: Yes							
Water-to-water heat pump: No							
Brine-to-water heat pump: No							
Low-temperature heat pump: Yes							
For low-temperature heat pumps, parameters shall be declared for low-temperature application. Otherwise, parameters shall be declared for medium-temperature application.							
Parameters shall be declared for average climate conditions.							
Item	Symbol	Value	Unit	Item	Symbol	Value	Unit
Rated heat output (*)	Prated	31	kW	Seasonal space heating energy efficiency	ηs	135	%
Declared capacity for heating for part load at outdoor temperature Tj				Declared coefficient of performance or primary energy ratio for part load at outdoor temperature Tj			
Tj = − 7 °C	Pdh	26,10	kW	Tj = − 7 °C	COPd	2,59	–
Tj = + 2 °C	Pdh	16,70	kW	Tj = + 2 °C	COPd	3,56	–
Tj = + 7 °C	Pdh	11,80	kW	Tj = + 7 °C	COPd	3,87	–
Tj = + 12 °C	Pdh	11,20	kW	Tj = + 12 °C	COPd	5,70	–
Tj = bivalent temperature	Pdh	31,00	kW	Tj = bivalent temperature	COPd	2,32	–
Tj = operation limit temperature	Pdh	31,00	kW	Tj = operation limit temperature	COPd	2,32	–
For air-to-water heat pumps:Tj = − 15 °C	Pdh	x,xx	kW	For air-to-water heat pumps:Tj = − 15 °C	COPd	x,xx	–
Bivalent temperature	Tbiv	-10	°C	For air-to-water HP : Operation limit temperature (maximum -7°C)	Tol	-10	°C
Cycling interval capacity for heating	Pcych	x,xx	kW	Cycling interval efficiency	COPcyc	x,xx	–
Degradation coefficient (**)	Cdh	0,99	–	Heating water operating limit temperature	WTOL	35	°C
Power consumption in modes other than active mode				Supplementary heater			
Off mode	P _{OFF}	0,075	kW	Rated heat output (**)	Psup	xx,x	kW
Thermostat-off mode	P _{TO}	0,075	kW	Type of energy input	–		
Standby mode	P _{SB}	0,6	kW				
Crankcase heater mode	P _{CK}	0,075	kW				
Other items							
Capacity control	fixed/variable	variable	Outdoor heat exchanger				
Sound power level, indoors	L _{WA}	x	db(A)	For air-to-water HP: Rated air flow rate, outdoors	Q _{airsource}	24000	m³/h
Sound power level, outdoors	L _{WA}	87	db(A)	For water-to-water HP: Rated water flow rate	Q _{watersource}	x	m³/h
Annual energy consumption	QHE	18998	kWh	For brine-to-water HP: Rated brine flow rate	Q _{brinesource}	x	m³/h
For heat pump combination heater:							
Declared load profile	–			Water heating energy efficiency	η _{wh}	x	%
Daily electricity consumption	Qelec	x	kWh	Daily fuel consumption	Q _{fuel}	x	kWh
Annual electricity consumption	AEC	x	kWh	Annual fuel consumption	AFC	x	GJ
Contact details	SALVADOR ESCODA SA PROVENZA 392 P2 08025 BARCELONA (SPAIN) +34 93 446 27 80						
(*) For heat pump space heaters and heat pump combination heaters, the rated heat output Prated is equal to the design load for heating Pdesignh, and the rated heat output of asupplementary heater Psup is equal to the supplementary capacity for heating sup(Tj).							
(**) If Cdh is not determined by measurement then the default degradation coefficient is Cdh = 0,9.							

MUNDO  CLIMA®



www.mundoclima.com

ASK FOR MORE INFORMATION

Phone: (+34) 93 446 27 81

eMail: info@mundoclima.com

TECHNICAL ASSISTANCE

Phone: (+34) 93 652 53 57