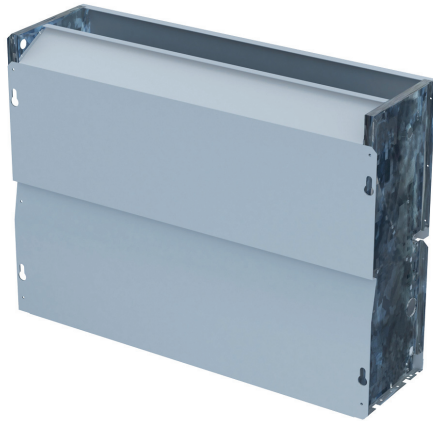


UNIVERSAL FAN COIL UNIT HORIZONTAL AND VERTICAL MUC-W7/SE Series



MUND CLIMA®

MUC-W7/CE Series



FEATURES

- Universal 2 pipes Fan Coil Unit.
- Floor or ceiling installation (vertical / horizontal).
- Low noise and low-energy consumption DC fan motor.
- Front air inlet (Version CE).
- Without the need of using supporting feet (Version CE).
- Includes condensate collecting tray in L-form for the valve.
- Hydraulic connections on the left side (cannot be changed).

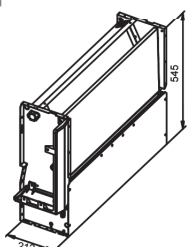
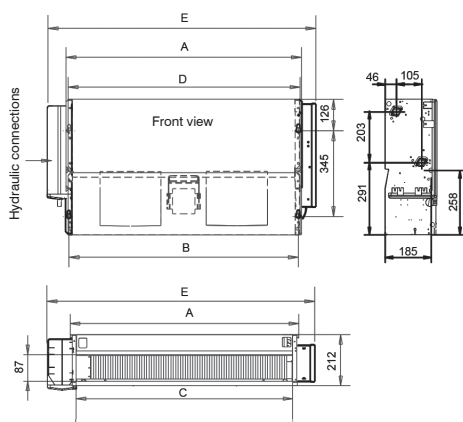
OPTIONALS

- 3 way valves with bypass included (CO05506 + CO05509).
- Control kit for fan coil unit includes wall wired control, temperature sensors, connection to the centralized control CCM and ModBus (LC04531).
- Centralized controller CCM* (CL92871).

*For connection it is necessary the fan coil unit control kit (LC04531).

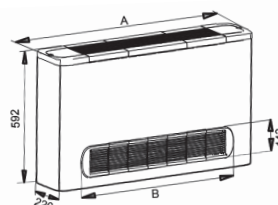
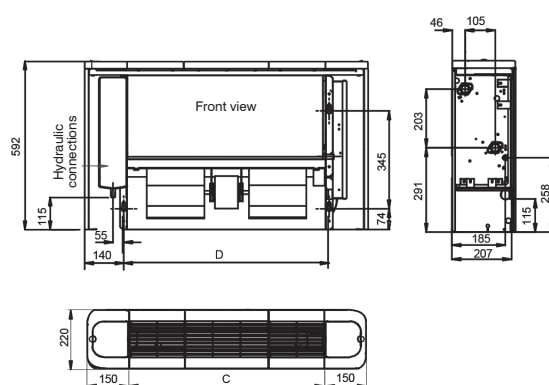
DIMENSIONS

MUC-W7/SE Series



Model	7	11	16	19	24
A (mm)	550	750	950	1250	
B (mm)	526	726	926	1226	
C (mm)	500	700	900	1200	
D (mm)	532	732	932	1232	
E (mm)	686	886	1086	1386	

MUC-W7/CE Series



Model	7	11	16	19	24
A (mm)	800	1000	1200	1500	
B (mm)	584	784	984	1284	
C (mm)	500	700	900	1200	
D (mm)	526	726	926	1226	

UNIVERSAL FAN COIL UNIT HORIZONTAL AND VERTICAL



TECHNICAL SPECIFICATIONS

Model	Without casing (Version SE)		MUC-07-W7/SE	MUC-11-W7/SE	MUC-16-W7/SE	MUC-19-W7/SE	MUC-24-W7/SE	
	With casing (Version CE)		MUC-07-W7/CE	MUC-11-W7/CE	MUC-16-W7/CE	MUC-19-W7/CE	MUC-24-W7/CE	
Code	Without casing (Version SE)		CL 04 580	CL 04 581	CL 04 582	CL 04 583	CL 04 584	
	With casing (Version CE)		CL 04 590	CL 04 591	CL 04 592	CL 04 593	CL 04 594	
Cooling	Capacity (High/Medium/Low) ⁽¹⁾	kW	2.07 / 1.52 / 1.07	3.25 / 2.63 / 2.12	4.57 / 3.35 / 2.62	5.43 / 4.32 / 3.58	7.17 / 5.67 / 4.72	
	Water flow (High/Medium/Low)	m ³ /h	0.36 / 0.27 / 0.20	0.59 / 0.49 / 0.38	0.81 / 0.60 / 0.47	0.93 / 0.78 / 0.63	1.29 / 0.99 / 0.84	
	Water pressure drop (High/Medium/Low)	kPa	11.13 / 6.7 / 3.8	23.2 / 16.38 / 11.14	25.52 / 15.03 / 9.95	18.54 / 13.01 / 8.71	30.94 / 18.96 / 14.04	
Heating	45 °C	Capacity (High/Medium/Low) ⁽²⁾	kW	2.39 / 1.76 / 1.3	3.62 / 2.82 / 2.17	4.66 / 3.38 / 2.57	6.38 / 4.81 / 3.93	8.45 / 6.32 / 5.05
		Water flow (High/Medium/Low)	m ³ /h	0.42 / 0.32 / 0.24	0.64 / 0.51 / 0.39	0.83 / 0.60 / 0.47	1.10 / 0.87 / 0.71	1.47 / 1.13 / 0.90
		Water pressure drop (High/Medium/Low)	kPa	8.9 / 7.29 / 4.3	19.57 / 15.1 / 9.8	21.58 / 12.5 / 7.91	17.62 / 15.39 / 10.7	27.39 / 21.6 / 14.12
	50 °C	Capacity (High/Medium/Low) ⁽³⁾	kW	2.78 / 2.07 / 1.42	4.37 / 3.34 / 2.63	5.52 / 3.98 / 3.03	7.44 / 5.69 / 4.71	9.96 / 7.48 / 5.94
		Water flow (High/Medium/Low)	m ³ /h	0.36 / 0.27 / 0.20	0.59 / 0.49 / 0.38	0.81 / 0.60 / 0.47	0.93 / 0.78 / 0.63	1.29 / 0.99 / 0.84
		Water pressure drop (High/Medium/Low)	kPa	11.99 / 5.22 / 3	22.9 / 13.86 / 9.1	23.02 / 12.41 / 7.7	24.16 / 12.51 / 8.5	34.9 / 16.71 / 12.38
Air flow rate (High / Medium / Low)		m ³ /h	369 / 272 / 196	604 / 448 / 343	678 / 492 / 383	1.017 / 720 / 588	1.509 / 1054 / 806	
Static pressure	Version SE	Pa	12	12	12	12	12	
	Version CE	Pa	0	0	0	0	0	
Exchanger water volume		L	0.195	0.259	0.344	0.471	0.471	
Power supply		V/Ph/Hz	220-240/1/50	220-240/1/50	220-240/1/50	220-240/1/50	220-240/1/50	
Consumption (High)		W	15	30	26	36	103	
Sound pressure ⁽⁴⁾		dB(A)	39/31/22	44/37/31	40/32/25	42/33/28	51/42/35	
Operation maximum pressure		MPa	1.6	1.6	1.6	1.6	1.6	
Inlet water maximum temperature		°C	65	65	65	65	65	
Water connections		inch	3/4"	3/4"	3/4"	3/4"	3/4"	
Drain connection		mm	Ø16	Ø16	Ø16	Ø16	Ø16	
Dimensions	Version SE (Width x Height x Depth) ⁽⁵⁾	mm	550x545x212	750x545x212	950x545x212	1.250 x 545 x 212	1.250 x 545 x 212	
	Version CE (Width x Height x Depth)	mm	800x592x220	1.000x592x212	1.200x592x220	1.500 x 592 x 220	1.500 x 592 x 220	
Weight	Version SE	kg	19	23.5	27	34	34	
	Version CE	kg	24.4	34.2	34.2	40	40	

Notes:

- ⁽¹⁾ Cooling capacity for each of the three air flow rates and according to the conditions: Water inlet/outlet water temperature 7/12 °C; Ambient temp. 27 °C DB, 19 °C WB.
- ⁽²⁾ Heating capacity for each of the three air flow rates and according to the conditions: Water inlet/outlet water temperature 45/40 °C; Ambient temperature 20 °C.
- ⁽³⁾ Heating capacity for each of the three air flow rates and according to the conditions: Water inlet/outlet water temperature 50 °C/*; Ambient temperature 20 °C.
- ⁽⁴⁾ Sound pressure level measured in semi-anechoic chamber.
- ⁽⁵⁾ Does not include dimensions of electric box (+50 mm) nor valve tray (+86 mm).

- The above design and specifications are subject to change of product improvement without prior notice.