

# 20 PORTABLE AIR CONDITIONERS MONOBLOC UNIT MUPO Series C6/H6



With outlet pipe to the outside



**VENTILATION FUNCTION**  
It allows operation with ventilation only.



**THERMOSTAT**  
It keeps automatically the set temperature.



**AIR DISCHARGE TUBE TO THE OUTSIDE**  
Easy and quick to install, it allows the use of the air conditioner immediately.



**DEHUMIDIFICATION**  
Moisture reduction restoring an optimum temperature in wet areas.



**CONDENSATE WATER REMOVAL**  
Removes condensate water so it is not necessary to connect the air conditioner to a drain. In dehumidification mode and in very humid environments, it is recommended to connect the equipment to a drain.  
In case the condensate tank is full, "P1" will appear on the screen.



**FOLLOW ME FUNCTION (IFEEL)**  
The wireless remote control adds a temperature sensor.



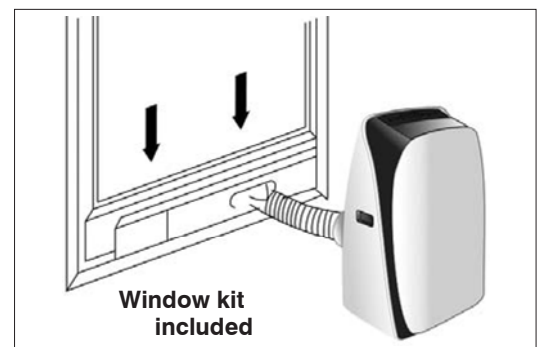
MUPO-07-C6  
(Cooling only)



MUPO-09-H6  
MUPO-12-H6  
(Heat pump)



Remote control  
INCLUDED



Window kit  
included

MODEL			MUPO-07-C6	MUPO-09-H6	MUPO-12-H6
Code			CL20006	CL20007	CL20008
Cooling	Rated capacity	kW	2,05	2,6	3,5
	Rated power input $P_{EER}$	kW	0,78	0,995	1,34
	EERd	W/W	2,63	2,61	2,62
	Energy Efficiency Class		A	A	A
	Electricity consumption $Q_{SD}$	kWh/h	0,78	0,995	1,315
Heating	Rated capacity	kW	--	2,6	3,3
	Rated power input $P_{COP}$	kW	--	0,865	1,10
	COPd	W/W	--	3,00	3,00
	Energy Efficiency Class		--	A+	A+
	Electricity consumption $Q_{SD}$	kWh/h	--	0,865	1,125
Power consumption in thermostat-off mode $P_{T0}$		W	43	54	70
Power consumption in standby mode $P_{SB}$		W	0,21	0,259	0,34
Sound power level $L_{WA}$		dB(A)	62	62	62
Power Supply		V-Hz-F	220-240V~ 50Hz, 1Ph		
Max. current		A	4,5	6	8
Air flow	Indoor	m <sup>3</sup> /h	330	410	410
	Outdoor	m <sup>3</sup> /h	450	500	570
Air pipe diameter		mm	130	150	150
Refrigerant	Kind		R410A		
	Qty.	kg	0,28	0,4	0,52
	Global warming potential GWP	kgCO <sub>2</sub> eq.	2088	2088	2088
Dimensions (W x D x H)		mm	345 x 355 x 750	480 x 400 x 795	480 x 400 x 795
Weight		kg	23,5	30	33