

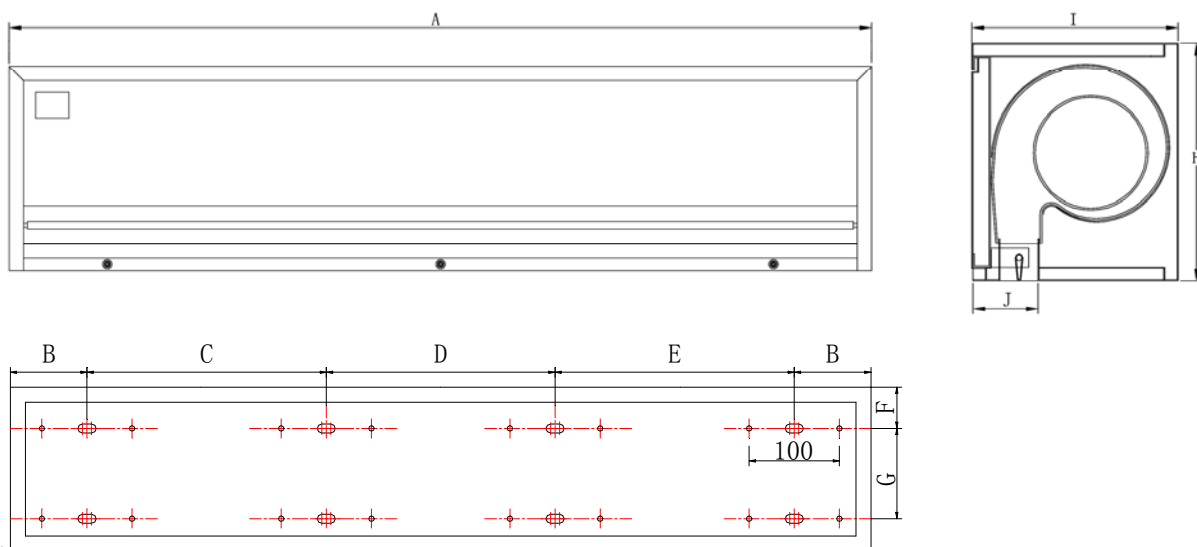
AIR CURTAIN

User and installation manual

MU-IN



1. IDENTIFICATION & INSTALLATION DIMENSIONS

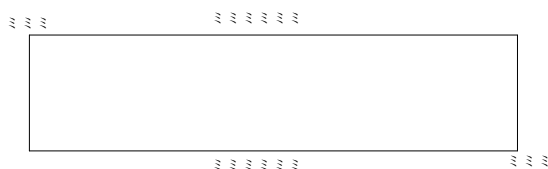


MODEL	A	B	C	D	E	F	G	H	I	J
MU-IN 09	900	95	347.5	---	347.5	64	100	240	215	70
MU-IN 12	1200	95	347.5	295	347.5					
MU-IN 15	1500		390.5	504	390.5					
MU-IN 18	1800		695	190	695					

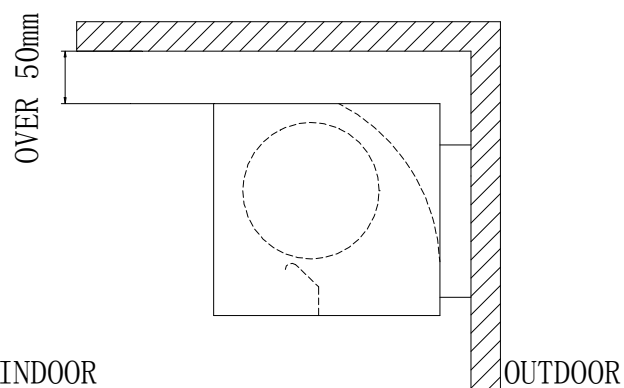
2. INSTALLATION CAUTION

Must follow the following asking when installing air curtain:

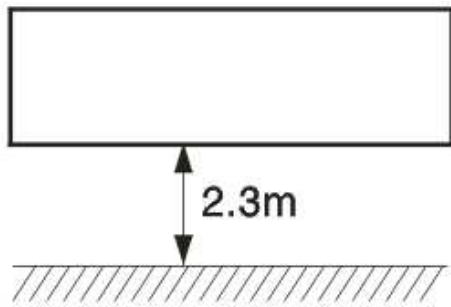
2.1 Please install the unit in a sturdy place to avoid the shaking and ensure its security (because it maybe cause the wall becoming flexible or shaking and noise.



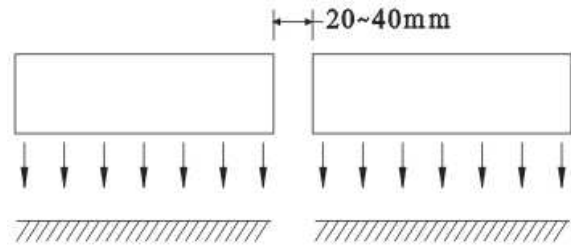
2.2 Please install the unit inside the room.



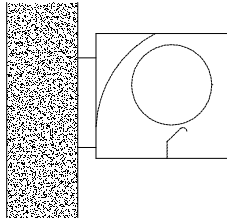
2.3 Don't install the unit too low, no less than 2.3 meter from the ground.



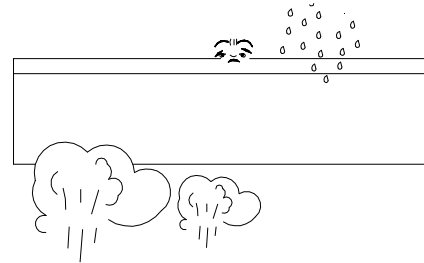
2.4 When the entrance is wider than the unit, it is recommended to install two or more units in parallel. In this case, provide 20-40mm gaps between the units.



2.5 Don't allow gaps between the unit and the wall. When hanging it from the ceiling, using the enclosed ceiling brackets.



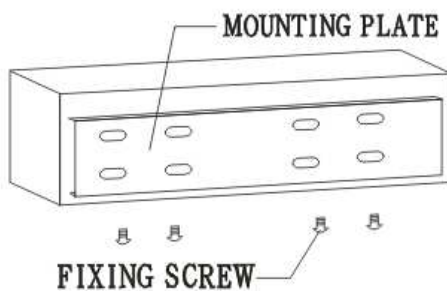
2.6 Don't install the unit in a place where it is splashed by water, exposed to excessive steam, explosive gas or corrosive gas.



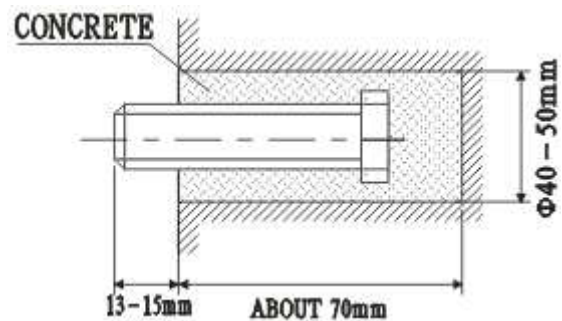
3. INSTALLATION

A. Installing on the concrete wall:

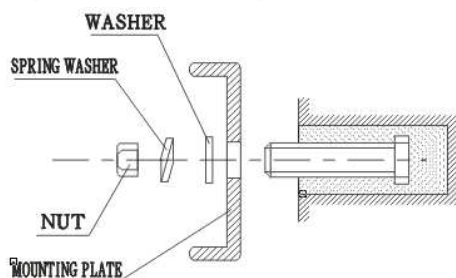
3.1.1 Removed the mounting plate
Unclamping the fixed screws on the back of main body to removed the mounting plate.



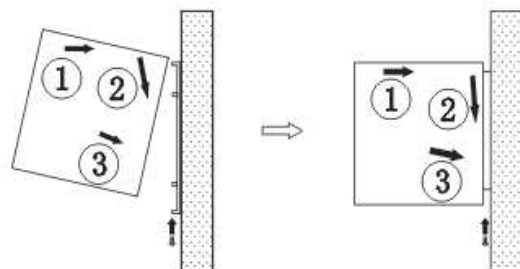
3.1.2 Fix the bolts in the proper position
(Decide the position with the mounting plate and pour cement into the bolt holes.)



3.1.3 When the cement has freeze, fit the mounting plate (use the washer and nut according to the following)

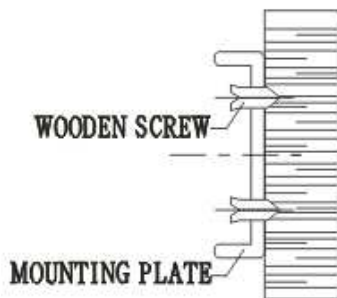


3.1.4 Install the main body
Set the main body onto the upper end of the mounting plate and clamp it as shown.

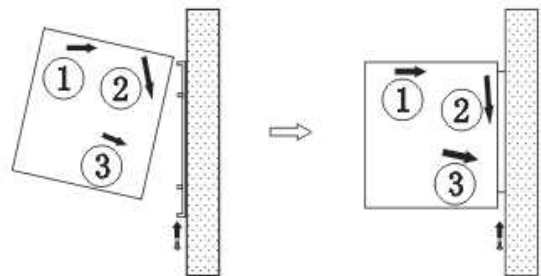


B. Installing on the wooden wall

3.2.1 Fix the mounting plate in the proper positions with tapping screw.

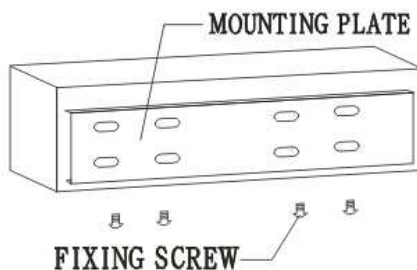


3.2.2 Same as the step 3 of A

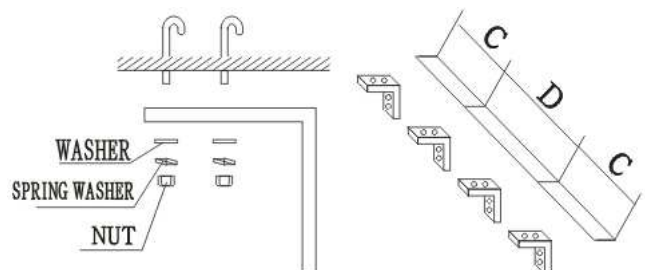


C. Hanging from the ceiling

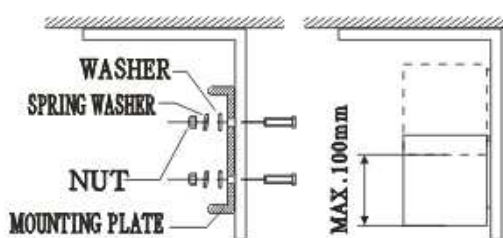
3.3.1 Remove the mounting plate from main body (Same as step 3.1.1)



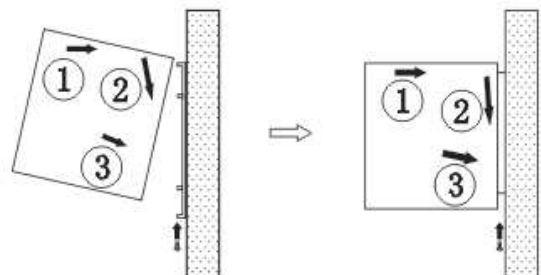
3.3.2 Fixing ceiling brackets as Fig.



3.3.3 Set the mounting plate on the ceiling brackets and ensure safe & fixing (use the bolts attached to the ceiling brackets as Fig. Using the ceiling brackets to hang from the ceiling, the position of mounting plate can be adjusted in the limit of 100mm.

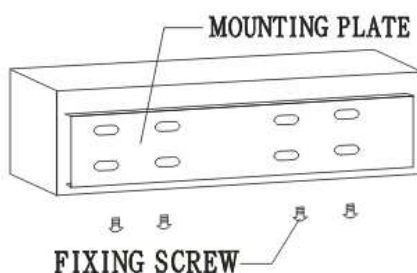


3.3.4 Do the same as step A to install the main body.

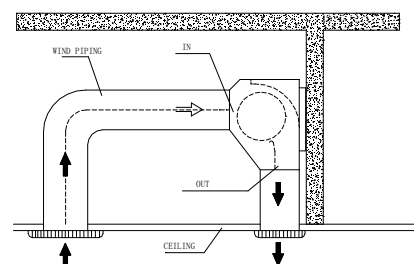


D. For above ceiling

3.4.1 Fix the air curtain as in the procedure for installing on the concrete wall.



3.4.2 Then pipe as right Fig. Instructs.





ASK FOR MORE INFORMATION:

Phone: +34 93 446 27 80 - Fax: +34 93 456 90 32

eMail: mundoclima@salvadorescoda.com

TECHNICAL ASSISTANCE:

Phone: +34 93 652 53 57 - Fax: +34 93 635 45 08