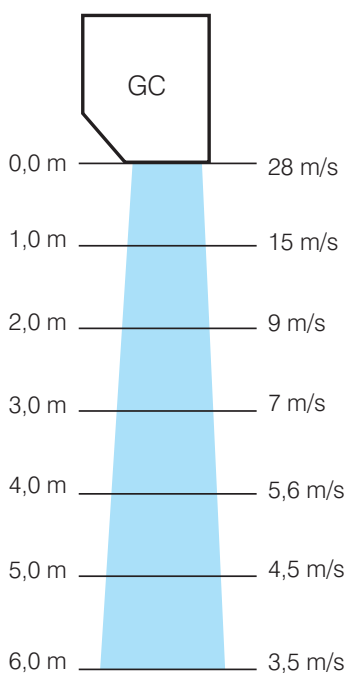
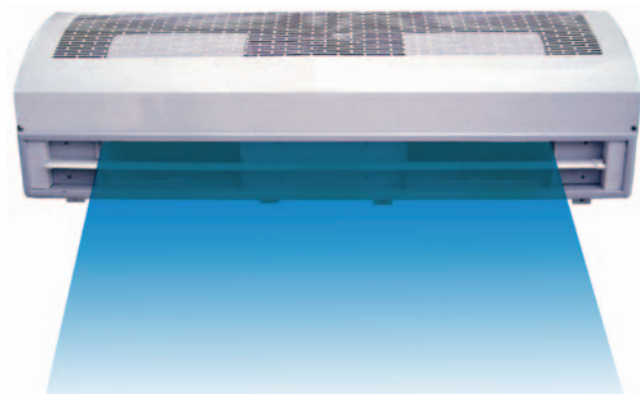


06 CENTRIFUGAL INDUSTRIAL AIR CURTAIN



MU-ECO GC Series

- Centrifugal fan.
- High efficiency design.
- High flow rate.
- Static pressure.
- Metallic case, resistant to fire.
- Maximum installation height: 6 m.
- Easy installation.
- Supply: 220V-50HZ-1 Ph



Motor double shaft



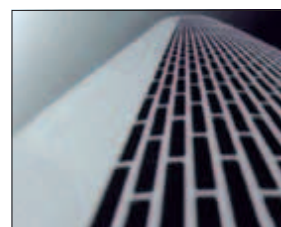
Metallic fan



Metallic fan



Centrifugal high capacity



Metallic case



Maximum installation height 6m

TECHNICAL DATA:

Model		MU-ECO 10 GC	MU-ECO 12 GC	MU-ECO 15 GC
Air flow rate	m ³ /h	3,709	3,709	3,563
Motor power	kW	1.5	1.5	2.25
Absorbed current	A	9.44	9.44	14.74
Air speed	m/s	28	28	28
Noise level	dB(A)	64	66	68
Height	mm	288	288	288
Long	mm	1,000	1,200	1,500
Deep	mm	273,5	273,5	273,5
Code		EC 06 420	EC 06 424	EC 06 425